

Detailed instructions for use for each product

The correct processing of an attachment is a prerequisite for success.
CEKA PRECI-LINE therefore offers an extensive range of accessories.
Training courses are organized on a regular basis.
Technical support is provided to dentists and dental technicians.
Moreover, all working procedures are described in detail in technical brochures and info sheets.
These are available in different languages on our Download Portal (<https://www.ckpl.eu>).

Side effects, warnings and precautions

The attachments are intended for single use. A damage on the threading of the retention part or base rings can pose a risk if the product is to be reused.
The products are non-sterile.
There is a risk of poor fit when patient conditions change.
Bacterial adhesion can be avoided by applying hygiene measures.
Inappropriate use or bad manufacturing can lead to premature wear of the attachments.
The functionality of the attachments will be adversely affected by traumas such as grinding and bruxism.
For the purpose of traceability we advise you to record the lot number of the applied products in the patient file.
Do not heat products containing titanium.
Do not use products containing nickel in case of nickel allergy.
The accessories RE H 79 and H 35 must be used outside the mouth.

INDEX

AXIAL

ATTACHMENTS

CEKA AXIAL REVERSE.....	4
PRECI-CLIX AXIAL.....	6
PRECI-CLIX RADICULAR.....	6

EXTRACORONAL

ATTACHMENTS

CEKA REVAX.....	8
CEKA EXTRACORONAL CLASSIC.....	8
PRECI-CLIX EXTRACORONAL.....	11
PRECI-VERTIX.....	12
PRECI-SAGIX.....	13

PROFILE

ATTACHMENTS

PRECI-HORIX.....	14
PRECI-BAR.....	15
PRECI-CLIP.....	16

DIGITAL

SOLUTIONS

DIGITAL LIBRARIES.....	17
------------------------	----

SPECIALTIES

PRECI-POST.....	20
CEKA SITE.....	21
CEKA Multi - CEKA Multi O.....	21
3-CP.....	21
CEKA BOND.....	21
PRECI-SEP.....	22
PLASTICWAX.....	22
PERMA-RET.....	22
MEASURING GAUGE.....	22

TABLE OF ALLOYS AND MATERIALS.....	22
------------------------------------	----

IMPLANT BUDDY DENTAL.....	23
IMPLANT BUDDY LAB.....	23
OMEGA TORQUE WRENCH.....	23

AXIAL ATTACHMENTS

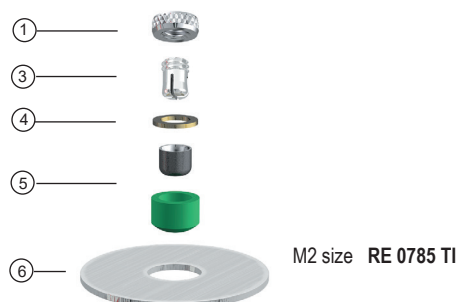
M2: H 3.80 mm - ø 3.4 mm
M3: H 4.34 mm - ø 4.4 mm

CEKA AXIAL REVERSE

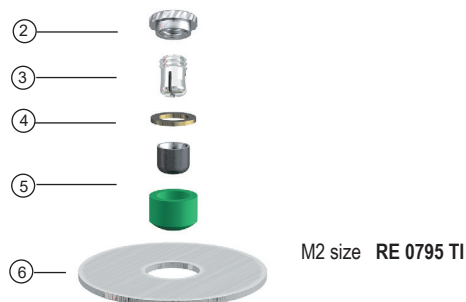
Female for bonding with CEKA SITE in post-copings or in bar constructions (all alloys).
Each package contains 1 attachment.

MALE FOR

(A) Bonding technique with CEKA SITE



(B) Acrylic fixation technique



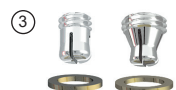
CEKA AXIAL COMPONENTS



M2 size: **RE 0085**
M3 size: **694 AR**
Retention part for bonding with CEKA SITE.
Including duplicating dummy. Do not heat.
TITANAX alloy - 2 + 2 pcs



M2 size: **RE 0095**
M3 size: **694 AKS2**
Retention part for circular acrylic fixation.
TITANAX alloy - 2 pcs



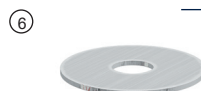
M2 size: **RE 0031**
M3 size: **694 C**
Male spring pin.
PALLAX alloy - 2 pcs + 2 space maintainers



M2 size: **RE 0096**
M3 size: **694 B**
Space maintainer of 0.3 mm thickness.
STAINLESS STEEL - 10 pcs



M2 size: **RE 0700 TI**
M3 size: **OL 0800 TI**
Female for bonding with CEKA SITE in post-copings
or in bar constructions.
TITANAX alloy - 1 + 1 pc



M2 size: **RA 0055**
Large space maintainer for post-copings.
For lab use only.
TINFOIL - 1 pc



M2 size: **RA 0063**
Base ring for cast-on technique with precious alloys.
IRAX alloy - 1 pc



M2 size: **RA 0064**
Base ring for cast-on technique with non-precious alloys.
NOPRAX alloy - 1 pc

CEKA AXIAL OVERSIZED MALE SPRING PINS



M2 size spring pin (PALLAX alloy)
with larger head (ø 1.95 mm, ø 2.02 mm)
RE 0031 195 red 2 pcs
RE 0031 202 blue 2 pcs



M2 size spring pin (gold-plated PALLAX alloy)
extra long (0.3 mm longer)
RE 0031 L 2 pcs



M3 size spring pin (PALLAX alloy)
extra long (0.3 mm longer)
694 C/L 2 pcs



M3 size spring pin (PALLAX alloy)
with larger head (ø 1.95 mm, ø 2.02 mm, ø 2.09 mm)
694 C / 195 red 2 pcs
694 C / 202 blue 2 pcs
694 C / 209 black 2 pcs

See page 22 for table of alloys and materials.

AXIAL ATTACHMENTS

CEKA AXIAL ACCESSORIES M2 AND M3 SIZE



M2 & M3 size: **RE H 5**
Laboratory key



M2 & M3 size: **P 8**
Paralleling mandrel and sandblasting tool for TITANAX females. For lab use only.



M2 & M3 size: **A 1**
Activating tool and screwdriver



M2 & M3 size: **RE P 2/5**
Paralleling mandrel for females. For lab use only.



M2 & M3 size: **RE H 79**
Instrument to deactivate spring pins. Only for use outside the oral cavity.



M2 & M3 size: **RE H 20**
Diamond burr for the bonding technique. For lab use only.

2 pcs



M2 & M3 size: **H 30**
Set of 4 profiles to indicate the diameter of the females

CEKA SITE
See page 21.

CEKA AXIAL ACCESSORIES M2 OR M3 SIZE



M2 size: **RE P 7**
M3 size: **P 7**
Paralleling mandrel for green female keepers. For lab use only.



M2 size: **RE H 17**
Protection cap in TITANAX alloy for threading into the base ring. Do not heat. **2 pcs**



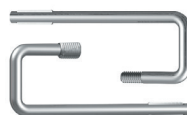
M2 size: **RE P 4**
M3 size: **P 4**
Paralleling mandrel for axial base rings. For lab use only.



M2 size: **RE H 1**
M3 size: **H 1**
Dummy spring pin with incorporated space maintainer. For lab use only. **2 pcs**



M2 size: **RE H 2**
M3 size: **H 2**
Impression tool for axial attachments, to be used with the (RE) H 14 **2 pcs**



M2 size: **RE H 4**
M3 size: **H 4**
Soldering accessory for axial base rings. For lab use only. **2 pcs**



M2 size: **RE H 14**
M3 size: **H 14**
Model analogue to combine with the (RE) H 2 or to be used with the spring pin, the space maintainer and the (RE) H 13 **2 + 2 pcs**



M2 size: **RE H 13**
M3 size: **H 13**
Female analogue for the repair and rebasing technique. For lab use only. **2 + 2 pcs**

See page 22 for table of alloys and materials.

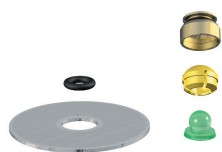
AXIAL ATTACHMENTS

H 3.4 mm - 4.1 mm
 ø 3.55 mm - 4 mm

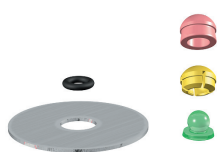
PRECİ-CLIX AXIAL

Axial ball attachment for acrylic resin overdentures with replaceable plastic female in three retention levels.

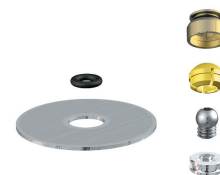
The female can be incorporated into acrylic resin or directly into the framework. The male can either be threaded, cast-on with a precious alloy, or cast in any hard alloy.



PRECİ-CLIX ATI # 1251
 Female housing for incorporation into acrylic resin.
 Plastic male for incorporation into post-copings.
 Cast in any hard alloy.



PRECİ-CLIX AP # 1252
 Female duplicating dummy for cast metal partial frames.
 Plastic male for incorporation into post-copings.
 Cast in any hard alloy.

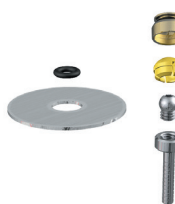


PRECİ-CLIX CV # 1261
 Female housing for incorporation into acrylic resin.
 Removable titanium male with high-fusing base ring for cast-on technique with precious alloys.

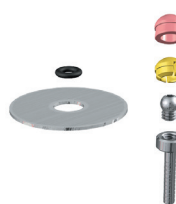
PRECİ-CLIX RADICULAR

Chairside ball attachment for acrylic resin overdentures with replaceable plastic female in three retention levels. The female can be incorporated into acrylic resin or directly into the framework.

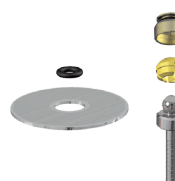
The titanium post is available in two versions: with removable male or with the spherical male in one piece. See page 7 for individual components.



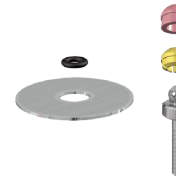
PRECİ-CLIX RTI # 1291
 Female housing for incorporation into acrylic resin.
 Cementable titanium post with removable titanium male.



PRECİ-CLIX RP # 1292
 Replaceable plastic female and duplicating dummy for cast metal partial frames.
 Cementable titanium post with removable titanium male.



PRECİ-CLIX RCT # 1293
 Female housing for incorporation into acrylic resin.
 Cementable titanium post with titanium male.



PRECİ-CLIX RCP # 1294
 Replaceable plastic female and duplicating dummy for cast metal partial frames.
 Cementable titanium post with titanium male.

PRECİ-CLIX DENTIST KIT # 1299
 Contains 2 radicular PRECI-CLIX RTI ball attachments, all necessary accessories and spare parts.

Set:
 2 x 1291 radicular PRECI-CLIX RTI ball attachments
 1 x 1226 set of 3 reamers
 1 x 1222 insertion tool
 1 x IMP-XS-042 screwdriver
 1 x RE H 2 impression tool (2 pcs)
 1 x RE H 14 model analogue (2 pcs)
 1 x 1234 replacement females (3 x 2 pcs)



PRECİ-CLIX RC DENTIST KIT # 1297
 Contains 2 radicular PRECI-CLIX RCT ball attachments, all necessary accessories and spare parts.

Set:
 2 x 1293 radicular PRECI-CLIX RCT ball attachments
 1 x 1226 set of 3 reamers
 1 x 1222 insertion tool
 1 x 1201 D male analogue
 1 x 1234 replacement females (3 x 2 pcs)



See page 22 for table of alloys and materials.

AXIAL ATTACHMENTS

PRECİ-CLIX - INDIVIDUAL COMPONENTS & ACCESSORIES

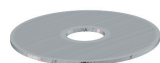


PRECİ-BALL FEMALE

Female in TITANAX (do not heat) or in ORAX alloy for acrylic fixation.

Height: 2.8 mm - \varnothing 3 mm

# 1201 A	ORAX ALLOY	1 pc
# 1201 AB	ORAX ALLOY	20 pcs
# 1205 A	TITANAX ALLOY	1 pc
# 1205 AB	TITANAX ALLOY	20 pcs



PRECİ-CLIX SPACE MAINTAINER

Large space maintainer for post-copings.

For lab use only.

TINFOIL - Thickness: 0.4 mm

# RA 0055	1 pc
-----------	------



PRECİ-CLIX HOUSING

Female housing in an anodized titanium alloy for fixation in acrylic resin dentures. Do not heat.

Height: 2.65 mm - \varnothing 4 mm

# 1235	6 pcs
# 1235B	30 pcs



PRECİ-CLIX FEMALE

Polyacetal - Height: 2.65 mm - \varnothing 3.55 mm

Normal retention:

# 1231	yellow	6 pcs
# 1231B	yellow	30 pcs

Reduced retention:

# 1232	white	6 pcs
# 1232B	white	30 pcs

Increased retention:

# 1233	red	6 pcs
# 1233B	red	30 pcs

Combination package:

# 1234	2 + 2 + 2 pcs
--------	---------------



PRECİ-CLIX FEMALE SET

Set of PRECI-CLIX females to be used on all 2.25 mm ball males, including implant abutments.

Set includes 2 females assembled in housing.

# 1242	2 sets
--------	--------



PRECİ-CLIX DUPLICATING DUMMY

Plastic duplicating dummy for cast metal partial frames.

No need for a space maintainer! For lab use only.

Height: 2.8 mm - \varnothing 3.55 mm

# 1236	6 pcs
# 1236B	30 pcs



PRECİ-CLIX SPACE MAINTAINER

Elastic space maintainer, to be placed between male and female during processing.

Rubber - Height: 0.7 mm - \varnothing 1.8 mm.

# 1251 B	6 pcs
----------	-------



PRECİ-CLIX MALE PA

Spherical burn-out plastic male for incorporation into post-copings and for casting. For lab use only.

Height: 2.4 mm - \varnothing 2.25 mm - \varnothing base: 3.2 mm

# 1205 C	1 pc
# 1205 CB	30 pcs



PRECİ-BALL/CLIX MALE V AND V LONG

Spherical, removable male in TITANAX alloy for incorporation into an M2 base ring on post-copings. Do not heat.

Height male V: 3.05 mm, male V long: 3.35 mm
 \varnothing 2.25 mm - Threads: M2 - Internal hex: 0.9 mm

# 1206 C	1 pc
# 1206 CL	0.3 mm extra long 1 pc



PRECİ-CLIX BASE RING

M2 base ring in the high-fusing IRAX or NOPRAX alloy to incorporate the 1206 C PRECI-CLIX male V. For cast-on technique with non-precious alloys or for soldering.

# RA 0063	IRAX ALLOY	1 pc
# RA 0064	NOPRAX ALLOY	1 pc



PRECİ-CLIX POST

Cementable post in TITANAX alloy with threaded base for the 1206 C PRECI-CLIX male V or with attached ball. Do not heat.

Post length: 7 mm (may be reduced) - \varnothing 1.35 mm
 \varnothing base: 3.4 mm - Threads: M2 - \varnothing ball: 2.25 mm

# 1291 C	with threading	1 pc
# 1293 C	with male part	1 pc



PRECİ-CLIX CUP BURR

Burr to finish the 1205 C PRECI-CLIX male PA and the 1281 C PRECI-CLIX male PE.

For lab use only.

\varnothing 2.35 mm

# 1230	1 pc
--------	------



PRECİ-CLIX PARALLELING MANDREL MALE

Adjustable paralleling mandrel for males.

For lab use only.

\varnothing 2.35 mm

# 1201 P	1 pc
----------	------



PRECİ-CLIX PARALLELING MANDREL FEMALE

Adjustable paralleling mandrel for females.

To be used with diverging males.

For lab use only.

\varnothing 2.35 mm

# 1211 P	1 pc
----------	------



PRECİ-CLIX MALE ANALOGUE

Male analogue for the working model, including space maintainer.

For lab use only.

# 1201 D	2 pcs + 2 space maintainers
----------	-----------------------------



PRECİ-CLIX R BURR SET

Set of 3 calibrated burs for right angle.

Used for root preparation prior to cementation of the PRECI-CLIX post.

# 1226	Set: 1 predrilling burr, 1 cavity burr, 1 precision reamer
# 1227	1 predrilling burr
# 1228	1 cavity burr
# 1229	1 precision reamer



PRECİ-BALL ACTIVATING TOOL

Activating tool to tighten the PRECI-BALL segments

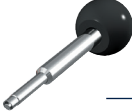
# 1220	1 pc
--------	------



PRECİ-BALL DEACTIVATING TOOL

Deactivating tool to spread the PRECI-BALL segments

# 1221	1 pc
--------	------



PRECİ-CLIX INSERTION TOOL

Insertion tool for the plastic females.

Total height: 67.5 mm

# 1222	1 pc
--------	------



PRECİ-CLIX PROTECTION CAP

Protection cap in TITANAX alloy for threading into the base ring. Do not heat.

\varnothing 3 mm - Threads: M2

# RE H 17	2 pcs
-----------	-------



CEKA SITE

Bonding composite for fixing attachment components. Store between 3 °C and 9 °C.

# CEKA SITE B	2 x 2 g
---------------	---------

EXTRACORONAL ATTACHMENTS

CEKA® ATTACHMENTS



M2 size (2 mm)
male spring pin
RE 0031

Height: 2.7 mm
2 pcs + 2 space maintainers



M3 size (3 mm)
male spring pin
694 C

Height: 3.15 mm
2 pcs + 2 space maintainers

M2: H 3.80 mm - ø 3.4 mm
M3: H 4.35 mm - ø 4.4 mm

CEKA REVAX

EXTRACORONAL GREEN

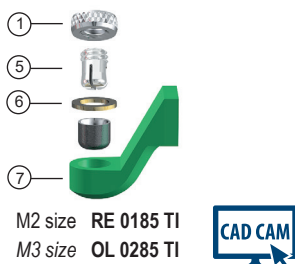
Female for the bonding technique with CEKA SITE. Use any dental alloy.

Each package contains 1 attachment and 3 different plastic profiles (30°, 45°, 60°) to choose from.

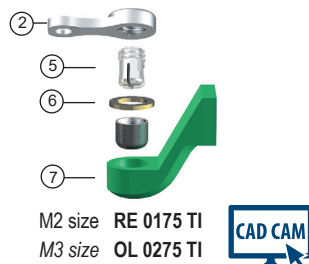
See page 9 for individual components.

MALE FOR

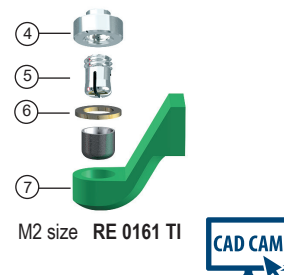
**(A) Bonding with
CEKA SITE**



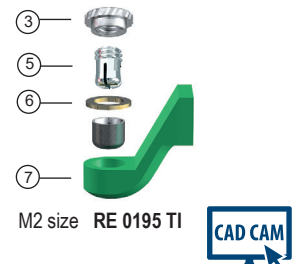
**(B) Winged acrylic
fixation**



(C) Soldering



**(D) Circular acrylic
fixation**



Please find our CAD/CAM products in section Digital solutions on page 18.

H 3.55 mm - ø 4.3 mm

CEKA EXTRACORONAL CLASSIC

Female for the cast-on technique with any dental alloy.

Each package contains 2 attachments in one bar profile. See page 9 for individual components.

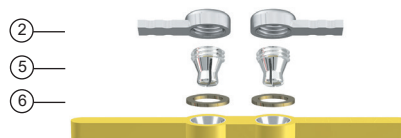
MALE FOR

**(A) Bonding with
CEKA SITE**



M3 size resilient OL 694 RPR

(B) Acrylic fixation



M3 size resilient OL 694 KSPR

(C) Soldering



M3 size resilient OL 694 SPR

EXTRACORONAL ATTACHMENTS

CEKA EXTRACORONAL COMPONENTS



①
M2 size: **RE 0085**
M3 size: **694 AR**
Retention part for bonding with CEKA SITE.
Including duplicating dummy. Do not heat.
TITANAX alloy - 2 + 2 pcs



②
M2 size: **RE 0075**
M3 size: **694 AKS**
Retention part for winged acrylic fixation.
TITANAX alloy - 2 pcs



③
M2 size: **RE 0095**
M3 size: **694 AKS2**
Retention part for circular acrylic fixation.
TITANAX alloy - 2 pcs



④
M2 size: **RE 0061**
M3 size: **694 AS**
Retention part for soldering.
PALLAX alloy - 2 pcs



⑤
M2 size: **RE 0031**
M3 size: **694 C**
Male spring pin.
PALLAX alloy - 2 pcs + 2 space maintainers



M3 size only: **724 C**
Rigid male spring pin.
PALLAX alloy - 2 pcs



M2 size: **RE 0096**
M3 size: **694 B**
Space maintainer of 0.3 mm thickness.
STAINLESS STEEL - 10 pcs



M2 size: **RE 0100 TI**
M3 size: **OL 0200 TI**
Female for bonding with CEKA SITE.
Use any dental alloy.
TITANAX alloy - 1 + 3 pcs

CEKA EXTRACORONAL OVERSIZED MALE SPRING PINS



M2 size spring pin (PALLAX alloy)
with larger head (ø 1.95 mm, ø 2.02 mm)
RE 0031 195 red 2 pcs
RE 0031 202 blue 2 pcs



M2 size spring pin (gold-plated PALLAX alloy)
extra long (0.3 mm longer)
RE 0031 L 2 pcs



M3 size spring pin (PALLAX alloy)
with larger head (ø 1.95 mm, ø 2.02 mm, ø 2.09 mm)
694 C / 195 red 2 pcs
694 C / 202 blue 2 pcs
694 C / 209 black 2 pcs



M3 size spring pin (PALLAX alloy)
extra long (0.3 mm longer)
694 C/L 2 pcs



Rigid M3 size spring pin (PALLAX alloy)
with larger head (ø 1.95 mm, ø 2.02 mm, ø 2.09 mm)
724 C / 195 red 2 pcs
724 C / 202 blue 2 pcs
724 C / 209 black 2 pcs

See page 22 for table of alloys and materials.

EXTRACORONAL ATTACHMENTS

CEKA EXTRACORONAL ACCESSORIES M2 AND M3 SIZE



M2 & M3 size: **RE H 5**
Laboratory key



M2 & M3 size: **A 1**
Activating tool and screwdriver



M2 & M3 size: **RE H 79**
Instrument to deactivate spring pins.
Only for use outside the oral cavity.



M2 & M3 size: **H 30**
Set of 4 profiles to indicate the diameter of the females.



M2 & M3 size: **P 8**
Paralleling mandrel and sandblasting tool for TITANAX females. For lab use only.



M2 & M3 size: **RE P 2/5**
Paralleling mandrel for females.
For lab use only.



M2 & M3 size: **RE H 20**
Diamond burr for the bonding technique.
For lab use only.

2 pcs



M2 & M3 size: **RE H 10**
Carbide burr with smooth stop for the metal sleeve.
For lab use only.

CEKA SITE
See page 21.

CEKA EXTRACORONAL ACCESSORIES M2 OR M3 SIZE



M2 size: **RE P 7**
M3 size: **P 7**
Paralleling mandrel for green female keepers.
For lab use only.



M2 size: **RE H 14** **2 + 2 pcs**
M3 size: **H 14** **2 + 2 pcs**
Impression tool for females, to be used with the spring pin, the space maintainer and the (RE) H 13.



M2 size: **RE H 13** **2 + 2 pcs**
M3 size: **H 13** **2 + 2 pcs**
Female analogue for the repair and rebasing technique.
For lab use only.



M2 size: **RE H 1** **2 pcs**
M3 size: **H 1** **2 pcs**
Dummy spring pin with incorporated space maintainer.
For lab use only.



M2 size: **RE H 16** **2 pcs**
M3 size: **H 16** **2 pcs**
Soldering accessory for extracoronar retention parts.
For lab use only.

CEKA KIT

REDUCED LABORATORY TOOL KIT

REVAX RK 3

Contents:

1 x H 1	Dummy spring pin
1 x H 13	Female analogue
1 x H 14	Model analogue
1 x H 16	Soldering accessory
1 x H 2	Impression tool
1 x P 7	Paralleling mandrel for green female keepers
1 x P 8	Paralleling mandrel and sandblasting tool
1 x RE H 1	Dummy spring pin
1 x RE H 10	Carbide burr
1 x RE H 13	Female analogue
1 x RE H 14	Model analogue
1 x RE H 16	Soldering accessory
1 x RE H 2	Impression tool
1 x RE H 5	Laboratory key
1 x RE P 2/5	Paralleling mandrel for females
1 x RE P 7	Paralleling mandrel for green female keepers

EXTRACORONAL ATTACHMENTS

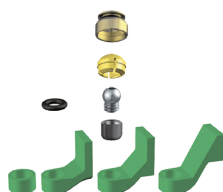
H 5.1 mm - 5.3 mm
ø 3.4 mm

PRECİ-CLIX EXTRACORONAL

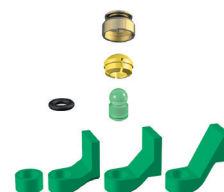
Periodontal friendly ball attachment for extracoronar and bar constructions with replaceable plastic female in three retention levels. The female can be incorporated into acrylic resin or directly into the framework. The male can be incorporated into the preferred profile by bonding with CEKA SITE, as a threaded component or as a burn-out component. To be used with any hard alloy. 1 attachment including 4 profiles/package



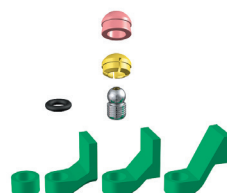
PRECİ-CLIX TI-TI # 1271
Titanium housing for incorporation into acrylic resin.
Titanium male for cementing in the cast male keeper.



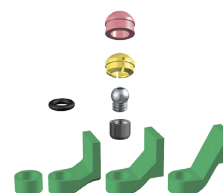
PRECİ-CLIX TI-V # 1276
Titanium housing for incorporation into acrylic resin.
Removable titanium male and cementable threading to incorporate.



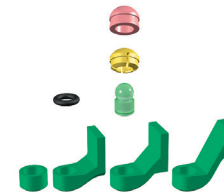
PRECİ-CLIX TI-P # 1281
Titanium housing for incorporation into acrylic resin.
Plastic male to assemble with the male keeper for casting in any hard alloy.



PRECİ-CLIX P-TI # 1272
Female duplicating dummy for cast metal partial frames.
Titanium male for cementing in the cast male keeper.



PRECİ-CLIX P-V # 1277
Female duplicating dummy for cast metal partial frames.
Removable titanium male and cementable threading to incorporate.



PRECİ-CLIX P-P # 1282
Female duplicating dummy for cast metal partial frames.
Plastic male to assemble with the male keeper for casting in any hard alloy.

Please find our CAD/CAM products in section Digital solutions on page 19.

INDIVIDUAL COMPONENTS & ACCESSORIES



PRECİ-CLIX HOUSING

Female housing in an anodized titanium alloy for fixation in acrylic resin dentures. Do not heat.
Height: 2.65 mm - ø 4 mm

# 1235	6 pcs
# 1235B	30 pcs

PRECİ-CLIX FEMALE

Polyacetal - Height: 2.65 mm - ø 3.55 mm
Normal retention:

# 1231	yellow	6 pcs
# 1231B	yellow	30 pcs

Reduced retention:

# 1232	white	6 pcs
# 1232B	white	30 pcs

Increased retention:

# 1233	red	6 pcs
# 1233B	red	30 pcs

Combination package:

# 1234	2 + 2 + 2 pcs
--------	---------------



PRECİ-CLIX DUPLICATING DUMMY

Plastic duplicating dummy for cast metal partial frames.
No need for a space maintainer! For lab use only.
Height: 2.8 mm - ø 3.55 mm

# 1236	6 pcs
# 1236B	30 pcs



PRECİ-CLIX MALE TI AND PE

Spherical titanium male (do not heat) for cementation with CEKA SITE into a cast male keeper, or spherical plastic male for incorporation into the male keeper prior to casting (for lab use only).
Height: 3.95 mm - ø 2.25 mm

# 1271 C	titanium	1 pc
# 1281 C	plastic	1 pc



PRECİ-CLIX MALE V AND V LONG

Spherical, removable male in TITANAX alloy. Do not heat.
Height male V: 3.05 mm, male V long: 3.35 mm
ø 2.25 mm - Threads: M2 - Internal hex: 0.9 mm

# 1206 C	1 pc
# 1206 CL	0.3 mm extra long 1 pc

CEKA SITE

See page 21.



PRECİ-CLIX THREADS TI

M2 threading in TITANAX alloy for cementing with CEKA SITE. Combine with 1206 C. Do not heat.
Height: 1.9 mm - ø 2.3 mm

# RE 4600 TI	1 pc
--------------	------



PRECİ-CLIX MALE KEEPER

4 burn-out plastic male keepers for extracoronar and bar constructions. Adaptable in form and height.
For lab use only.
Internal ø 2.35 mm - External ø 3.4 mm

# RE 04 TI	1 x 0°, 1 x 30°, 1 x 45°, 1 x 60°
------------	-----------------------------------



PRECİ-CLIX PARALLELING MANDREL MALE KEEPER

Paralleling mandrel for the RE 04 TI male keeper.
For lab use only.
ø 2.35 mm

# RE P 7	1 pc
----------	------



PRECİ-CLIX PARALLELING MANDREL BASE RING

Paralleling mandrel for M2 base rings.
For lab use only.
ø 2.35 mm - Threads: M2

# RE P 4	1 pc
----------	------



PRECİ-CLIX SCREWDRIVER FOR THREADED MALES

External hex: 0.9 mm - Length: 26 mm

# IMP-XS-042	1 pc
--------------	------



PRECİ-CLIX MALE ANALOGUE

Male analogue for the working model, including space maintainer. For lab use only.

# 1201 D	2 pcs + 2 space maintainers
----------	-----------------------------



PRECİ-CLIX INSERTION TOOL

Insertion tool for the plastic females.
Total height: 67.5 mm

# 1222	1 pc
--------	------



PRECİ-CLIX PARALLELING MANDREL MALE

Adjustable paralleling mandrel for males.
For lab use only. ø 2.35 mm

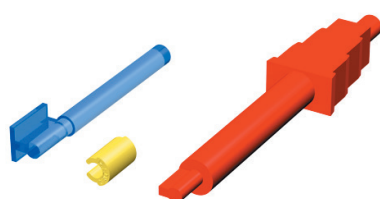
# 1201 P	1 pc
----------	------

See page 22 for table of alloys and materials.

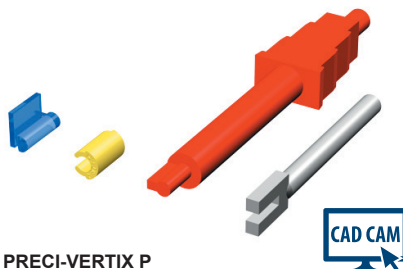
EXTRACORONAL ATTACHMENTS

PRECİ-VERTIX®

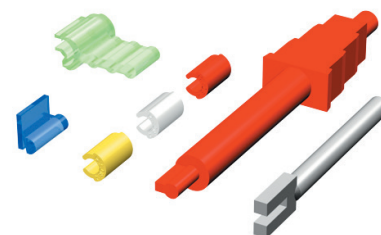
Extracoronar slide attachment with burn-out plastic male. The elastic females are easily replaceable and available in three friction levels. PRECI-VERTIX has easy procedures and minimal servicing. It gives excellent patient comfort and can be used with anterior abutments for optimum aesthetics. To be used with any hard dental alloy. All tools included. Over 50 years of clinical experience.



**PRECİ-VERTIX STANDARD
1801 KIT**
6 males with attached paralleling mandrel
6 yellow females
1 insertion tool



**PRECİ-VERTIX P
1811 KIT**
6 angled males for best abutment and tissue contours
6 yellow females
1 paralleling mandrel
1 insertion tool



**PRECİ-VERTIX P COMBI
1812 KIT**
2 angled males for best abutment and tissue contours
2 + 2 + 2 females
2 castable housings
1 paralleling mandrel
1 insertion tool

Please find our CAD/CAM products in section Digital solutions on page 18.

INDIVIDUAL COMPONENTS & ACCESSORIES

PRECİ-VERTIX FEMALE

Polypropylene
Height: 5 mm (may be reduced) - ø 3.3 mm
Available in three friction levels:

normal friction:

1802 yellow 6 pcs
1802B yellow 30 pcs

reduced friction:

1805 white 6 pcs
1805B white 30 pcs

increased friction:

1806 red 6 pcs
1806B red 30 pcs

combination package:

1807 2 y + 2 r + 2 w
1807B 25 y + 15 r + 10 w



PRECİ-VERTIX STANDARD MALE

Male with extension as paralleling mandrel. Remove the extension with a hot instrument after positioning. Cast in any hard alloy. Round the occlusal aspect of the male after processing. For lab use only.

Height: 5.9 mm (may be reduced up to 3 mm)
ø 1.8 mm

1803 6 pcs
1803B 30 pcs

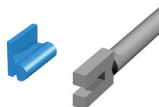


PRECİ-VERTIX P MALE

Male with 45° inclination for maximum incorporation possibilities and a periodontal friendly design. Cast in any hard alloy. Round the occlusal aspect of the male after processing. For lab use only.

Height: 5.9 mm (may be reduced up to 3 mm)
ø 1.8 mm

1813 6 pcs + paralleling mandrel
1813B 30 pcs + paralleling mandrel



PRECİ-VERTIX HOUSING

Plastic female housing for casting and to incorporate with the soldering, bonding or acrylic fixation technique. For lab use only.

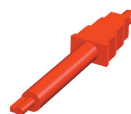
Height: 7 mm - Length: 12 mm
Extension height: 5 mm - ø 4.1 mm

1808 6 pcs
1808B 30 pcs



PRECİ-VERTIX INSERTION TOOL

Double-sided insertion tool for the 3 female types
1804 1 pc



PRECİ-VERTIX PARALLELING MANDREL

Adjustable metal paralleling mandrel for frequent users of PRECI-VERTIX P. For lab use only.

Groove width: 1.1 mm
ø paralleling mandrel: 2.35 mm

1845 1 pc

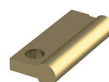


PRECİ-VERTIX MALE ANALOGUE

Brass male analogue, for repairs or when making a new prosthesis. For lab use only.

Height: 9 mm - ø 1.8 mm

1819 2 pcs



See page 22 for table of alloys and materials.

EXTRACORONAL ATTACHMENTS

MINI: H 3.1 mm - ø 3.1 mm
STANDARD: H 4.1 mm - ø 4.2 mm

PRECISAGIX

Sagittal ball attachment with segmented female for partial dentures and implant bar applications. The replaceable plastic female in three retention levels is incorporated directly into the framework.
Cast the plastic male in a hard alloy. Cast-on the metal male with a non-precious alloy. The threaded male can be used with precious and non-precious alloys.
PRECISAGIX is available in two ball sizes: Mini 1.7 mm and Standard 2.2 mm.

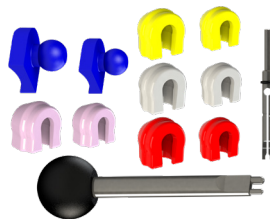
PRECISAGIX INTRO KIT P

Introduction kit with **castable plastic males**, the necessary tools and females in three different retention levels for Mini size 1.7 and Standard size 2.2.
Cast the males in any hard dental alloy.

22-piece kit:

- 2 + 2 castable **plastic males**
- 2 + 2 yellow females (normal retention)
- 2 + 2 white females (reduced retention)
- 2 + 2 red females (increased retention)
- 2 + 2 duplicating dummies/processing females
- 1 universal paralleling mandrel
- 1 universal insertion tool

Intro kit castable male: # 1301



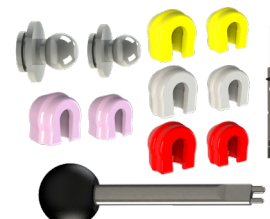
PRECISAGIX INTRO KIT M

Introduction kit with **cast-on NOPRAX males**, the necessary tools and females in three different retention levels for Mini size 1.7 and Standard size 2.2.
Cast-on technique for non-precious alloys.

22-piece kit:

- 2 + 2 cast-on **NOPRAX males**
- 2 + 2 yellow females (normal retention)
- 2 + 2 white females (reduced retention)
- 2 + 2 red females (increased retention)
- 2 + 2 duplicating dummies/processing females
- 1 universal paralleling mandrel
- 1 universal insertion tool

Intro kit cast-on male: # 1303



INDIVIDUAL COMPONENTS & ACCESSORIES

PRECISAGIX FEMALE - polyacetal

Mini size ø 1.7: height: 3.1 mm - ø 3.1 mm

Yellow - normal retention:

1311 6 pcs # 1311B 30 pcs

White - reduced retention:

1312 6 pcs # 1312B 30 pcs

Red - increased retention:

1313 6 pcs # 1313B 30 pcs

Combination package:

1314 2 + 2 + 2 pcs

Standard size ø 2.2: height: 4.1 mm - ø 4.2 mm

Yellow - normal retention:

1361 6 pcs # 1361B 30 pcs

White - reduced retention:

1362 6 pcs # 1362B 30 pcs

Red - increased retention:

1363 6 pcs # 1363B 30 pcs

Combination package:

1364 2 + 2 + 2 pcs

PRECISAGIX DUPLICATING DUMMY / PROCESSING FEMALE

For lab use only.

Mini size ø 1.7:

1316 6 pcs # 1316B 30 pcs

Standard size ø 2.2:

1366 6 pcs # 1366B 30 pcs

PRECISAGIX MALE P

Spherical plastic male to cast in a hard dental alloy.
For lab use only.

Mini size ø 1.7:

1321 6 pcs # 1321B 30 pcs

Standard size ø 2.2:

1371 6 pcs # 1371B 30 pcs

PRECISAGIX MALE M

NOPRAX male for cast-on technique with non-precious alloys.

Mini size ø 1.7:

1322 2 pcs # 1322B 20 pcs

Standard size ø 2.2:

1372 2 pcs # 1372B 20 pcs

PRECISAGIX 2.2 MALE VCC

TITANAX male ø 2.2 for CAD/CAM applications with M2 x 0.35 threading and 0.9 mm internal hex. Contains Ni.
Use the IMP-XS-042 screwdriver.

1374 1 pc

PRECISAGIX MALE V

NOPRAX Standard male ø 2.2 mm with M2 threading and 0.9 mm internal hex.

Use the IMP-XS-042 screwdriver.

1373 1 pc

PRECISAGIX BASE RING

For cast-on technique in IRAX (with precious alloys) or in NOPRAX (with non-precious alloys).

M2 threading for the 1373 Standard male

RA 0063 IRAX ALLOY 1 pc

RA 0064 NOPRAX ALLOY 1 pc

PRECISAGIX HOUSING

TITANAX female housing for incorporation into acrylic resin. Do not heat.

Mini ø 1.7: height: 3.5 mm - width: 4.3 mm

1325 2 pcs # 1325B 20 pcs

Standard ø 2.2: height: 4.6 mm - width: 4.8 mm

1375 2 pcs # 1375B 20 pcs

PRECISAGIX PARALLELING MANDREL FOR MALE

Universal paralleling mandrel for PRECISAGIX males.

For lab use only.

1300 P for ø 1.7 and 2.2 1 pc

PRECISAGIX SCREWDRIVER FOR THREADED MALE

Total length: 26 mm - External hex: 0.9 mm

IMP-XS-042 1 pc

PRECISAGIX INSERTION TOOL

Universal insertion tool for PRECISAGIX females

1323 for ø 1.7 and 2.2 1 pc

PRECISAGIX ANALOGUE

Model analogue for male part. For lab use only.

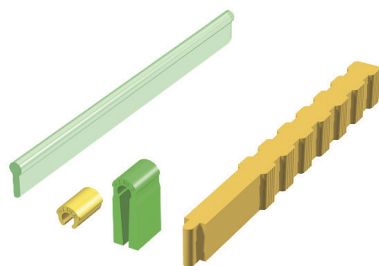
1331 for ø 1.7 2 pcs

1381 for ø 2.2 2 pcs

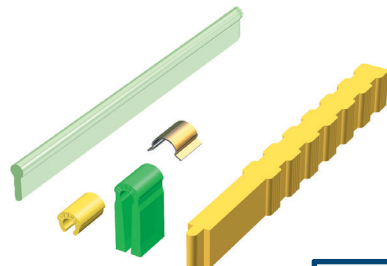
PROFILE ATTACHMENTS

PRECI-HORIX®

Burn-out plastic bar with elastic plastic riders. The bar attachment allows a rotational and a slight vertical movement by compression of the plastic riders. The riders are easily replaceable and available in three retention levels.



**PRECI-HORIX STANDARD
1701 KIT**
2 plastic bar patterns
6 yellow riders
6 processing riders
1 insertion tool



**PRECI-HORIX COMBI
1741 KIT**
1 plastic bar pattern
2 yellow riders
2 processing riders
2 stainless steel housings
1 insertion tool

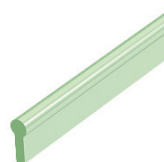


Please find our CAD/CAM products in section Digital solutions on page 19.

INDIVIDUAL COMPONENTS & ACCESSORIES



PRECI-HORIX METAL HOUSING
Ultrathin stainless steel housing with titanium/nitrate layer (gold-coloured) for a perfect fit of the riders in the prosthesis. The housing is polymerized into acrylic resin (with the processing rider). Do not solder! Contains Ni.
Length: 5 mm - Width: 5 mm - Thickness: 0.2 mm
1706 6 pcs
1706B 30 pcs



PRECI-HORIX PLASTIC PATTERN
Burn-out plastic bar pattern which may be reduced to facilitate incorporation into close bite situations. Cast in any hard alloy. For lab use only.
Bar height: 4 mm - Length: 50 mm - ø 1.8 mm
1704 6 pcs
1704B 30 pcs



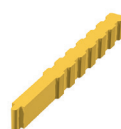
PRECI-HORIX ALIGNMENT METAL HOUSING
Metal housing in TITANAX alloy. Do not heat.
Height: 3.33 mm - Width: 4.22 mm
1710 6 pcs
1710B 30 pcs



PRECI-HORIX PATTERN ANALOGUE
Plastic pattern analogue for the working model, to be used in case of repair and relining, or when making a new prosthesis. For lab use only.
Height: 8.25 mm - Length: 50 mm - ø 1.8 mm
1707 2 pcs



PRECI-HORIX RIDER
Polypropylene
Height: 2.87 mm - Length: 5 mm - ø 3.3 mm
Available in three retention levels:
normal retention:
1802 yellow 6 pcs
1802B yellow 30 pcs
reduced retention:
1805 white 6 pcs
1805B white 30 pcs
increased retention:
1806 red 6 pcs
1806B red 30 pcs
combination package:
1807 2 y + 2 r + 2 w
1807B 25 y + 15 r + 10 w



PRECI-HORIX INSERTION TOOL
Insertion tool for the 3 rider types
1705 1 pc



PRECI-HORIX PARALLELING MANDREL
Paralleling mandrel for bars. Ideal for paralleling multiple pattern sections. For lab use only.
1708 1 pc



PRECI-HORIX PROCESSING RIDER
Adapt the plastic processing rider to the bar prior to polymerization. For lab use only.
Length: 5 mm (may be reduced to fit the bar height)
1703 6 pcs
1703B 30 pcs

See page 22 for table of alloys and materials.

PROFILE ATTACHMENTS

PRECI-BAR

Bar attachment in two sizes: MINI and STANDARD. The bar is either rigid (U-shaped) or resilient (oval). A choice of three alloys for the rider.

MINI RIDERS



Height: 2.8 mm - Width: 4 mm



ORAX MINI RIDER
1102/H/MR/OR 50 mm



PALLAX MINI RIDER
1102/H/MR/PA 50 mm



STAINLESS STEEL MINI RIDER
Contains Ni.
1102/H/MR/IN 50 mm

STANDARD RIDERS



Height: 3.5 mm - Width: 5 mm



ORAX STANDARD RIDER
1100/H/MR/OR 50 mm



PALLAX STANDARD RIDER
1100/H/MR/PA 50 mm



STAINLESS STEEL STANDARD RIDER
Contains Ni.
1100/H/MR/IN 50 mm

MINI PROFILES



Height: 2.3 mm - Width: 1.6 mm



PLASTIC RESILIENT OVAL MINI BAR
For lab use only.
1012/B 4 x 50 mm

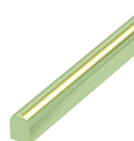
STANDARD PROFILES



Height: 3 mm - Width: 2.2 mm



PLASTIC RESILIENT OVAL STANDARD BAR
For lab use only.
1013/B 4 x 50 mm



PLASTIC RIGID U-SHAPED STANDARD BAR
For lab use only.
1011/B 4 x 50 mm

PARALLELING MANDRELS

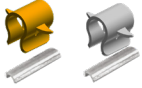


For lab use only.
1100 P
Paralleling mandrel for STANDARD bars
1102 P
Paralleling mandrel for MINI bars

TABLE OF ALLOYS PRECI-BAR

ORAX - Yellow - Au 58.8 - Pt 1.6 - Pd 3.2 - Ag 22.4 - Cu 12.7 - Zn 1.3
Melting range: 870-920 °C
PALLAX - White - Au 2 - Pt 9.5 - Pd 37 - Ag 37 - Cu 12.5 - Co 2
Melting range: 1055-1130 °C
STAINLESS STEEL - White - Fe 69 - Cr 17 - Ni 11 - Mo 2 - Mn 1
Do not heat! **Contains Ni.**

Round bar attachment with adjustable rider. The rider is available with occlusal or lateral retention for acrylic fixation, and in gold alloy or stainless steel.



PRECI-CLIP RIDER LA

Adjustable rider with lateral retention for acrylic resin. Do not solder the rider!

Stainless steel version contains Ni.

Height: 3.65 mm - Length: 3.5 mm - Space maintainer: 0.7 mm

Available in:

# 1105	ORAX ALLOY	2 pcs + 2 space maintainers
# 1105AB	ORAX ALLOY	20 pcs + 20 space maintainers
# 1106	STAINLESS STEEL	2 pcs + 2 space maintainers
# 1106AB	STAINLESS STEEL	20 pcs + 20 space maintainers



PRECI-CLIP RIDER OC

Adjustable rider with occlusal retention for acrylic resin. Do not solder the rider!

Stainless steel version contains Ni.

Height: 3.65 mm - Length: 3.5 mm - Space maintainer: 0.7 mm

Available in:

# 1125	ORAX ALLOY	2 pcs + 2 space maintainers
# 1125AB	ORAX ALLOY	20 pcs + 20 space maintainers
# 1126	STAINLESS STEEL	2 pcs + 2 space maintainers
# 1126AB	STAINLESS STEEL	20 pcs + 20 space maintainers



PRECI-CLIP BAR PATTERN

Round plastic bar pattern for casting in any hard alloy between natural teeth and between implants. For lab use only.

Length: 50 mm - ø 1.8 mm

1014/B 4 pcs

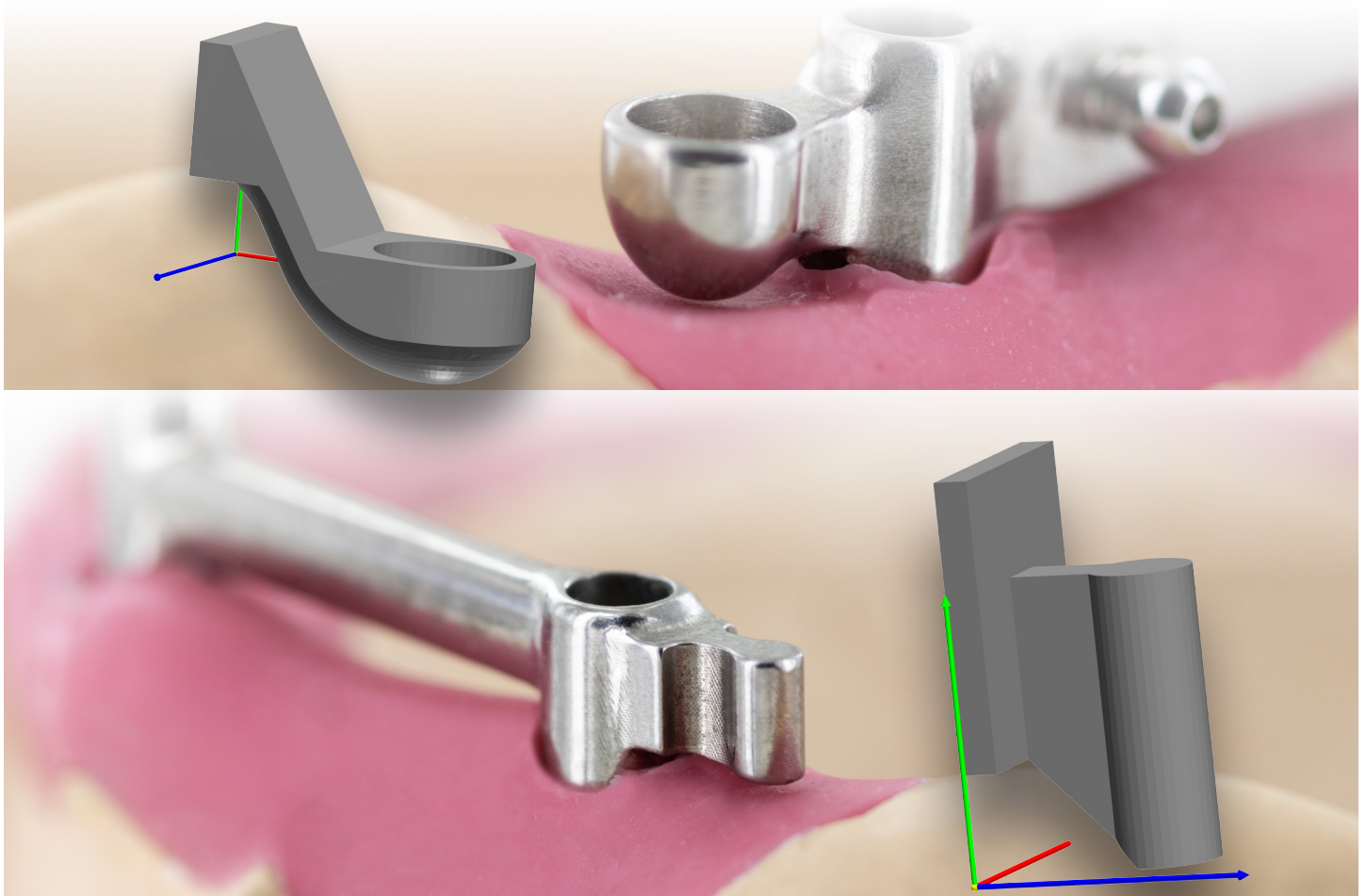


PRECI-CLIP PATTERN ANALOGUE

Pattern analogue in hard self-isolating plastic for the working model, to be used in case of repair and relining, or when making a new prosthesis.

Height: 8.25 mm - Length: 50 mm - ø 1.8 mm

1707 2 pcs



From manual to digital!

Digitisation has impacted the use of attachments in the dental industry. ALPHADENT NV has followed this trend and made the CEKA PRECI-LINE attachments available for digitally manufactured restorations. Our digital library is currently available for various CAD/CAM systems such as 3Shape, exocad, Dental Wings, and others. The removable partial denture in combination with crown and bridgework or implants offers patients a good and long-term solution. In addition to the use of a lingual shoulder, parallelism between the attachments is essential to ensure the proper functioning of the prosthesis. The current design software allows the dental technician to change the axis and path of insertion of the attachments in an instant.

How to obtain the digital library?

On the CEKA PRECI-LINE website, the digital files and installation manual can be easily downloaded free of charge.

Which CEKA PRECI-LINE attachments are available for digital processing?

Depending on the CAD system, the following digital files are available:

Extracoronaral attachments:

CEKA REVAX M2 & M3, PRECI-VERTIX, PRECI-SAGIX (2.2 mm version)
PRECI-CLIX EXTRACORONAL (with male for cementation or threading)

Bar profiles:

PRECI-HORIX (1.8 mm), PRECI-CLIP (1.8 mm round bar pattern)
PRECI-BAR: resilient Mini profile (Y-shaped), resilient Standard profile (oval) and rigid Standard profile (U-shaped)

The threaded base rings are available on request only, as these parts cannot be milled by in-house milling machines. This application is currently only possible with industrial machines.

M3 threads (# RA 0063 - on request only)

M2 threads (# 691 D - on request only)

Male for bonding with CEKA SITE



REVAX TI CAD-CAM
M2 size **RE 0185 TI CC**
M3 size **OL 0285 TI CC**

Kit:
1 retention part
1 male spring pin
1 space maintainer
1 female

Male for winged acrylic fixation



REVAX TI CAD-CAM
M2 size **RE 0175 TI CC**
M3 size **OL 0275 TI CC**

Kit:
1 retention part
1 male spring pin
1 space maintainer
1 female

Male for soldering



REVAX TI CAD-CAM
M2 size **RE 0161 TI CC**
M3 size **OL 0261 TI CC**

Kit:
1 retention part
1 male spring pin
1 space maintainer
1 female

Male for circular acrylic fixation



REVAX TI CAD-CAM
M2 size **RE 0195 TI CC**
M3 size **OL 0295 TI CC**

Kit:
1 retention part
1 male spring pin
1 space maintainer
1 female

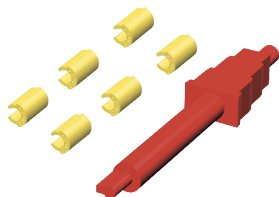
INDIVIDUAL COMPONENTS & ACCESSORIES

See page 9 and 10.



M2 size: **RE 4500 TI**
M3 size: **694 TI**
Female for bonding with CEKA SITE
in post-copings or in bar constructions.
Do not heat.
TITANAX alloy - 2 pcs

PRECI-VERTIX



PRECI-VERTIX P SET CAD-CAM
1811 CC

Kit:
6 yellow females
1 insertion tool

INDIVIDUAL COMPONENTS & ACCESSORIES

See page 12.



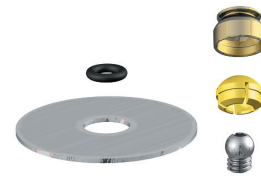
PRECİ-CLIX TI-TI CAD-CAM # 1271 CC
Titanium housing for incorporation into acrylic resin.
Titanium male for cementing in the cast or CAD/CAM manufactured male keeper.

Kit:
1 female housing
1 yellow plastic female
1 cementable titanium male
1 space maintainer



PRECİ-CLIX TI-V CAD-CAM # 1276 CC
Titanium housing for incorporation into acrylic resin.
Removable titanium male and cementable threading to incorporate into the cast or CAD/CAM manufactured structure.

Kit:
1 female housing
1 yellow plastic female
1 threaded titanium male
1 titanium threads
1 space maintainer



PRECİ-CLIX CV CAD-CAM # 1261 CC
Titanium housing for incorporation into acrylic resin.
Removable titanium male.

Kit:
1 female housing
1 yellow plastic female
1 threaded titanium male
1 space maintainer
1 large space maintainer



PRECİ-CLIX P-TI CAD-CAM # 1272 CC
Female duplicating dummy for cast metal partial frames.
Titanium male for cementing in the cast or CAD/CAM manufactured male keeper.

Kit:
1 female duplicating dummy
1 yellow plastic female
1 cementable titanium male
1 space maintainer

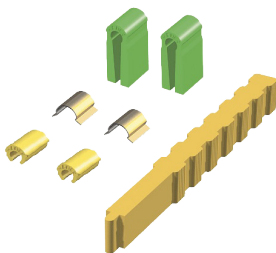


PRECİ-CLIX P-V CAD-CAM # 1277 CC
Female duplicating dummy for cast metal partial frames.
Removable titanium male and cementable threading to incorporate into the cast or CAD/CAM manufactured structure.

Kit:
1 female duplicating dummy
1 yellow plastic female
1 threaded titanium male
1 titanium threads
1 space maintainer

INDIVIDUAL COMPONENTS & ACCESSORIES

See page 11.



PRECİ-HORIX COMBI CAD-CAM # 1741 CC

Kit:
2 yellow riders
2 processing riders
2 metal housings
1 insertion tool

INDIVIDUAL COMPONENTS & ACCESSORIES

See page 14.

PRECI-POST M

Rational system with a conicity of 2°30' over the entire useful length. Form and dimensions according to Dr Mooser. For post-copings and temporary post cores with one or more roots. Yellow and blue colour codification.



PRECI-POST M SET

2001

- 1 yellow reamer
- 1 blue reamer
- 25 yellow opaque impression posts
- 25 blue opaque impression posts
- 25 yellow transparent laboratory posts
- 25 blue transparent laboratory posts



PRECI-POST M LABORATORY POST

Transparent burn-out plastic laboratory posts. For lab use only.

- | | | | |
|----------|------------|-----------------------------------|--|
| # 2003GL | 50 pcs | yellow | tip ø 0.80 mm, cone length 10.70 mm, total length 18.60 mm |
| # 2003BL | 50 pcs | blue | tip ø 1.00 mm, cone length 12.30 mm, total length 22.90 mm |
| # 2003L | 2 x 50 pcs | combination package yellow & blue | |



PRECI-POST M IMPRESSION POST

Opaque plastic impression posts (with retention), to be used with any impression technique (including silverplating and epoxy)

- | | | | |
|---------|------------|-----------------------------------|--------------------------------|
| # 2002G | 50 pcs | yellow | tip ø 0.80 mm, length 14.10 mm |
| # 2002B | 50 pcs | blue | tip ø 1.00 mm, length 16.70 mm |
| # 2002 | 2 x 50 pcs | combination package yellow & blue | |



PRECI-POST M REAMER

Reamer according to the Mooser system

- | | | | |
|---------|------|--------|---------------|
| # 2004G | 1 pc | yellow | tip ø 0.80 mm |
| # 2004B | 1 pc | blue | tip ø 1.00 mm |

PRECI-POST CC

Cylindro-conical system: 5°30' at the base and then cylindrical over the entire useful length for optimum retention. For post-copings and temporary post cores with one or more roots. Yellow, red, blue, and green colour codification.



PRECI-POST CC SET

For lab use only.

- | | |
|--------|--|
| # 2050 | 50 yellow posts, 50 red posts, 50 blue posts, 50 green posts |
| # 2060 | 20 yellow posts, 15 red posts, 10 blue posts, 5 green posts |



PRECI-POST CC PLASTIC POST

Burn-out plastic posts for lab use only.

- | | | | |
|---------|--------|--------|--|
| # 2051A | 50 pcs | yellow | ø 1.40 mm, tip ø 0.65 mm, cone length 4.60 mm, total length 16.60 mm |
| # 2052B | 50 pcs | red | ø 1.60 mm, tip ø 0.70 mm, cone length 5.60 mm, total length 18.60 mm |
| # 2053C | 50 pcs | blue | ø 1.80 mm, tip ø 0.75 mm, cone length 6.40 mm, total length 20.00 mm |
| # 2054D | 50 pcs | green | ø 2.00 mm, tip ø 0.80 mm, cone length 7.05 mm, total length 22.40 mm |

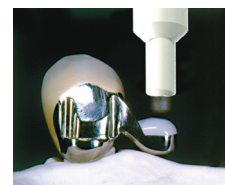
SPECIALTIES

CEKA SITE



CEKA SITE is a bonding and filling material.

Always use at room temperature.
Sandblast the metal surface to be bonded with coarse aluminium oxide.
Use the automix tip to expell CEKA SITE. Maximum working time: 1.5 minutes.
The material is sufficiently set after 10 minutes.
Store at 3 °C to 9 °C.



CEKA SITE B 2 x 2 g composite, 6 mixing tips
6705B CEKA SITE/CEKA Multi Mix Tips 20 pcs

CEKA Multi - CEKA Multi O



CEKA Multi Composite (colourless) and **CEKA Multi O Composite** (fluorescent white) are purely chemical curing attachment composites for adhesive bonding of zirconia constructions to restorations made of zirconia, stainless steel, non-stainless steel and ceramic.

CEKA Multi Primer is a universal luting agent for permanent, secure bonding between zirconia and acrylics, metals and all-ceramic restorations.

Store CEKA Multi Composite at 3-9 °C.
Store CEKA Multi Primer at 10-25 °C.



# 6701	CEKA Multi Composite	2 x 4 g + 6 automix tips
# 6711	CEKA Multi O Composite	2 x 4 g + 6 automix tips
# 6702	CEKA Multi Primer	5 ml
# 6705B	CEKA Multi Mix Tips	20 pcs

3-CP



Aesthetical conditioner for non-precious metals to improve metal-ceramic bonding and the final aesthetic result. Avoids the yellow-green discolouration during the production of artificial teeth.

Store at room temperature in its original, well-sealed container.

3-CP 20 g



CEKA BOND

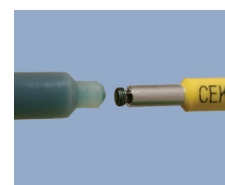


CEKA BOND is an anaerobic adhesive to prevent gradual unthreading of prosthetic components.

The components can still be unthreaded by using the proper instruments.

Setting time: 3 hours.
Store between 8 °C and 21 °C.

CB1 5 ml



SPECIALTIES

PRECI-SEP



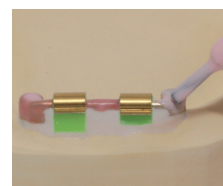
PRECI-SEP is a latex-based separator, spacer and release agent for multiple dental applications:

- spacer for precision attachments
- spacer for composite and acrylic provisional restorations
- spacer for customized abutments when modelling with self-cure or light-cure acrylic
- protects against sandblasting and acids
- spacer with vacuum formed trays
- release agent for crowns when pouring a pick-up impression

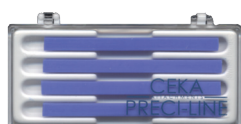
For lab use only.

6501

15 ml



PLASTICWAX



Wax with plastic filler.

Ideal for build-up and milling technique.

For lab use only.

Available as build-up wax (45 g) or in 8° profiles
(height: 4.5 mm - length: 60 mm - width top: 1.9 mm / bottom: 2.8 mm)

IMP-CK-045

box

45 g

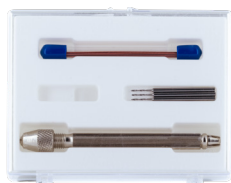
IMP-CK-014

8° profiles

4 pcs



PERMA-RET



Mechanical retention for acrylic and composite teeth.
Ideal for single tooth repairs or in deep bites.

1601

Set: 1 wire holder, 3 twist drills,
100 cm of threaded titanium anodized wire

1602

13 x 80 mm of threaded titanium anodized wire

1604

1 wire holder*

1606

3 twist drills*

* For lab use only



MEASURING GAUGE



Sterilizable measuring gauge to determine the diameters of the most current ball attachments and abutments, as well as the bar dimensions.

Facilitates the choice of the appropriate female.

For lab use only.

H 35

1 pc

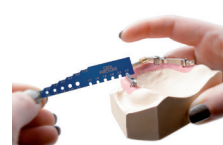


TABLE OF ALLOYS AND MATERIALS

PALLAX - For soldering to precious and non-precious alloys

White - Au 2 - Ag 37 - Pt 9.5 - Pd 37 - Cu 12.5 - Co 2

Melting range: 1067-1220 °C

Heat treatment: 60 min at 450 °C

IRAX - For the cast-on technique with precious alloys only

White - Au 60 - Pt 24 - Pd 15 - Ir 1

Melting range: 1400-1460 °C

NOPRAX - For the cast-on technique with non-precious alloys only

White - Cr 28 - Co (balance) - Mo 6 - others: Si, Mn

Melting range: 1355-1450 °C

ORAX - For soldering to precious and non-precious alloys

Yellow - Au 67 - Ag 13.5 - Pt 8.95 - Cu 11 - Zn 0.2

Melting range: 910-995 °C

Heat treatment: 60 min at 400 °C

PLATIRAX - For the cast-on technique with all dental alloys

White - Pt 85 - Ir 15

Melting range: 1790-1820 °C

TITANAX - Only for bonding and acrylic fixation

White - Ti 90 - Al 6 - V 4

Melting range: 1663-1682 °C

STAINLESS STEEL - Only for bonding and acrylic fixation

White - Fe 66 - Cr 17 - Ni 11 - Mo 2 - other 4 - Do not heat! Contains Ni.

POLYPROPYLENE

1802, 1805, 1806

POLYACETAL

1231, 1232, 1233, 1311, 1312, 1313, 1361, 1362, 1363, 2002, 2002B, 2002G

The new tool kit that covers 99% of the implant-supported prosthetic cases features:

- Short and long drivers, colour-coded for easy visibility
- Convenient thumb knob fits directly into torque drivers
- Magnetic base that keeps all components secure and in place
- Entire Implant Buddy can be sterilized

Combine with the OMEGA adjustable torque wrench for the safest and most accurate torque control.

IMPLANT BUDDY DENTAL



Short drivers: total length 17 mm - shaft length 6.5 mm
Long drivers: total length 24 mm - shaft length 13.5 mm

Prosthetic connections (long and short) included:

- SCS screwdriver – Straumann
- Angled access driver
- Unigrip driver – Nobel Biocare
- Hex 1.3 mm – BioHorizons, Astra, Sweden & Martina
- Hex 1.25 mm – Zimmer, Camlog
- Hex 1.2 mm – 3i Systems, Megagen, BTI
- Hex 0.9 mm – Ankylos

1012046 Implant Buddy Dental

1012045 Implant Buddy Dental with OMEGA torque wrench

IMPLANT BUDDY LAB



Short drivers: total length 24 mm - shaft length 16 mm
Long drivers: total length 40 mm - shaft length 32 mm

Prosthetic connections (long and short) included:

- Straight driver – Straight systems
- SCS screwdriver – Straumann
- Angled access driver
- Unigrip driver – Nobel Biocare
- Hex 1.3 mm – BioHorizons, Astra, Sweden & Martina
- Hex 1.2 mm – 3i Systems, Megagen, BTI
- Hex 0.9 mm – Ankylos

1012047 Implant Buddy Lab

OMEGA TORQUE WRENCH



4 mm square drive connection.
Works hand in hand with the Implant Buddy driver set.

- High precision calibrated torque
- Consistent and accurate – Guaranteed to be accurate to 6000 clicks, 300 sterilization cycles, or 3 years
- User friendly – Easy ergonomic handle, autoclavable, simple maintenance

Adjustable torque: 15 Ncm to 50 Ncm
Length: 94 mm

1031003 1 pc

AXIAL
ATTACHMENTS

EXTRACORONAL
ATTACHMENTS

PROFILE
ATTACHMENTS

DIGITAL
SOLUTIONS

SPECIALTIES

CEKA
PRECI-LINE

Arseus Lab NV
Mannebeekstraat 33
8790 Waregem
Belgium

+32 (0)56 629 530
info@ckpl.eu
www.ckpl.eu

Prospectus no 269.EN Rev. 3/2025