

# ELECTROSURGICAL ACCESSORIES

*TECHNICAL INFORMATION*



# INDEX

---

Page 06:	<i>Power Supply Cable</i>
Page 09:	<i>Surgical pencil</i>
Page 12:	<i>Foot Switch</i>
Page 16:	<i>Neutral</i>
Page 23:	<i>Connection</i>
Page 29:	<i>Electrode</i>
Page 34:	<i>Adapters</i>
Page 36:	<i>Bipolar/Monopolar</i>
Page 44:	<i>Evacuation Kit</i>
Page 47:	<i>Units support</i>

# CAPTIONS

## Compatibility:

**+** = optional

**x** = not compatible

**+A** = compatible only if you use adapter

**N** = Quantity Supplied



**Packaging:**  
quantity of articles contained



**Autoclavable at 134°**



**Not reusable**



**Sterilized with ethylene**

**IP67**

**The item is completely dust-proof  
and can with stand a 30-minute  
immersion in standing water**



**Anti explosion**



**100 Sterilization cycles**



**30 Sterilization cycles**





# ACCESSORIES



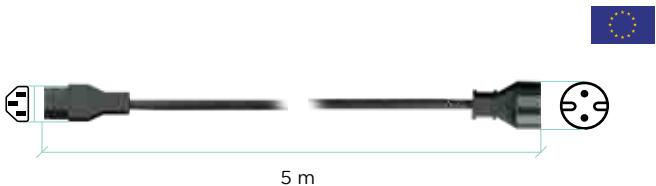
# POWER SUPPLY CABLE

**Description** Power supply cable SIE-IEC  
**Cable Lenght** 5 m (196,85 in)

- + 50 D
- + 80 D
- + 80
- + 120
- + 160
- + 200
- + TOUCH 200
- + FLASH 120
- + FLASH 160 HF
- + FLASH 200
- + 300 HP
- + 400 HP
- + SURTRON EVAC
- + SURTRON ABC
- + TOUCH HP 50D
- + TOUCH HP 80D
- + TOUCH HP 80
- + TOUCH HP 120
- + TOUCH HP 160
- + TOUCH HP 200
- + TOUCH HP 300
- + TOUCH HP 400
- + TOUCH HP EVAC



00100.01

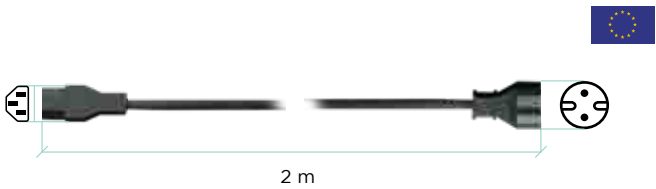


**Description** Power supply cable SIE-IEC  
**Cable Lenght** 2 m (78,74 in)

- + 50 D
- + 80 D
- + 80
- + 120
- + 160
- + 200
- + TOUCH 200
- + FLASH 120
- + FLASH 160 HF
- + FLASH 200
- + 300 HP
- + 400 HP
- + SURTRON EVAC
- + SURTRON ABC
- + TOUCH HP 50D
- + TOUCH HP 80D
- + TOUCH HP 80
- + TOUCH HP 120
- + TOUCH HP 160
- + TOUCH HP 200
- + TOUCH HP 300
- + TOUCH HP 400
- + TOUCH HP EVAC



00100.03

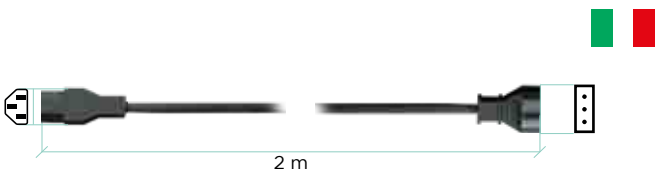


**Description** Power supply cable IT-IEC  
**Cable Lenght** 2 m (78,74 in)

- + 50 D
- + 80 D
- + 80
- + 120
- + 160
- + 200
- + TOUCH 200
- + FLASH 120
- + FLASH 160 HF
- + FLASH 200
- + 300 HP
- + 400 HP
- + SURTRON EVAC
- + SURTRON ABC
- + TOUCH HP 50D
- + TOUCH HP 80D
- + TOUCH HP 80
- + TOUCH HP 120
- + TOUCH HP 160
- + TOUCH HP 200
- + TOUCH HP 300
- + TOUCH HP 400
- + TOUCH HP EVAC



00100.00

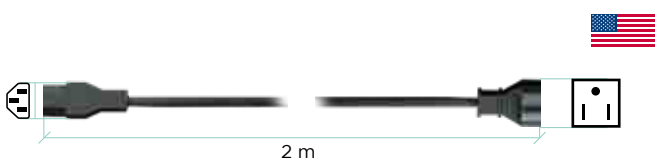


**Description** Power supply cable USA-IEC  
**Cable Lenght** 2 m (78,74 in)

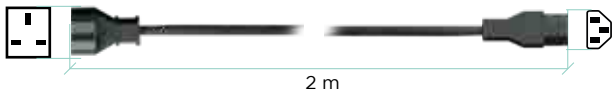
- + 50 D
- + 80 D
- + 80
- + 120
- + 160
- + 200
- + TOUCH 200
- + FLASH 120
- + FLASH 160 HF
- + FLASH 200
- + 300 HP
- + 400 HP
- + SURTRON EVAC
- + SURTRON ABC
- + TOUCH HP 50D
- + TOUCH HP 80D
- + TOUCH HP 80
- + TOUCH HP 120
- + TOUCH HP 160
- + TOUCH HP 200
- + TOUCH HP 300
- + TOUCH HP 400
- + TOUCH HP EVAC



00100.04



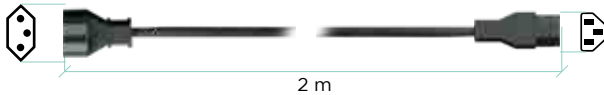
00100.05



Description	Power supply cable UK-IEC
Cable Lenght	2 m (78,74 in)
50 D	
+ 80 D	
+ 80	
+ 120	
+ 160	
+ 200	
+ TOUCH 200	
+ FLASH 120	
+ FLASH 160 HF	
+ FLASH 200	
+ 300 HP	
+ 400 HP	
+ SURTRON EVAC	
+ SURTRON ABC	
+ TOUCH HP 50D	
+ TOUCH HP 80D	
+ TOUCH HP 80	
+ TOUCH HP 120	
+ TOUCH HP 160	
+ TOUCH HP 200	
+ TOUCH HP 300	
+ TOUCH HP 400	
+ TOUCH HP EVAC	



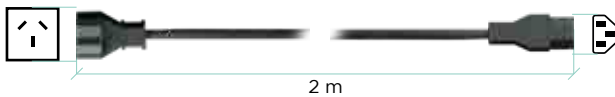
00100.07



Description	Power supply cable BR-IEC
Cable Lenght	2 m (78,74 in)
50 D	
+ 80 D	
+ 80	
+ 120	
+ 160	
+ 200	
+ TOUCH 200	
+ FLASH 120	
+ FLASH 160 HF	
+ FLASH 200	
+ 300 HP	
+ 400 HP	
+ SURTRON EVAC	
+ SURTRON ABC	
+ TOUCH HP 50D	
+ TOUCH HP 80D	
+ TOUCH HP 80	
+ TOUCH HP 120	
+ TOUCH HP 160	
+ TOUCH HP 200	
+ TOUCH HP 300	
+ TOUCH HP 400	
+ TOUCH HP EVAC	



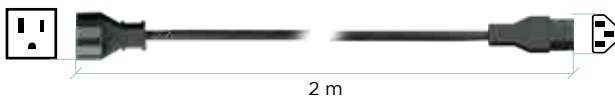
00100.09



Description	Power supply cable AU/CN-IEC
Cable Lenght	2 m (78,74 in)
50 D	
+ 80 D	
+ 80	
+ 120	
+ 160	
+ 200	
+ TOUCH 200	
+ FLASH 120	
+ FLASH 160 HF	
+ FLASH 200	
+ 300 HP	
+ 400 HP	
+ SURTRON EVAC	
+ SURTRON ABC	
+ TOUCH HP 50D	
+ TOUCH HP 80D	
+ TOUCH HP 80	
+ TOUCH HP 120	
+ TOUCH HP 160	
+ TOUCH HP 200	
+ TOUCH HP 300	
+ TOUCH HP 400	
+ TOUCH HP EVAC	



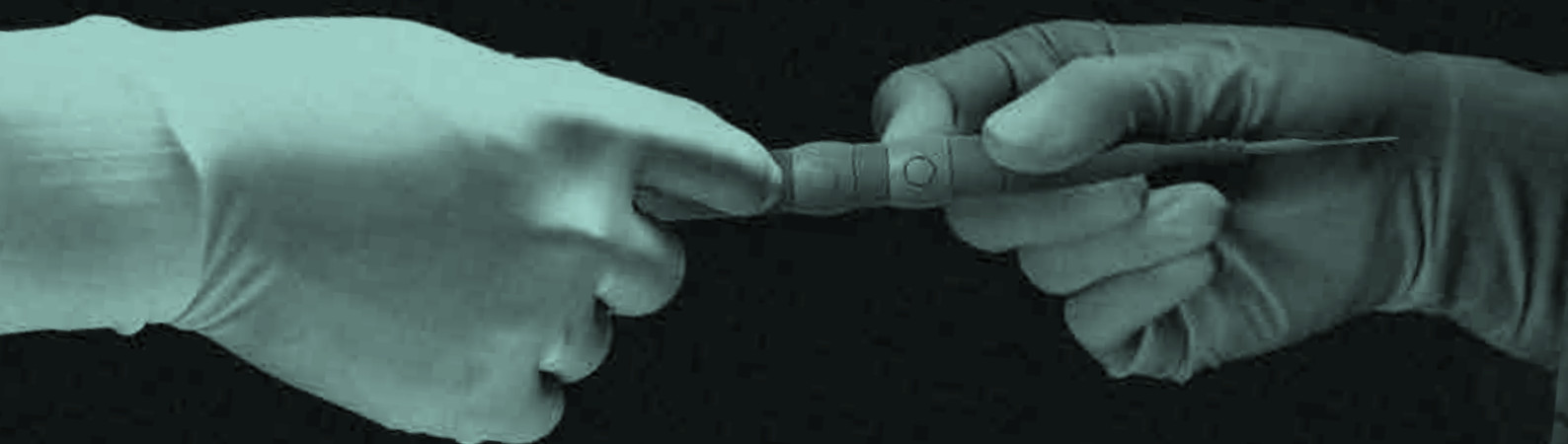
00100.10



Description	Power supply cable JP-IEC
Cable Lenght	2 m (78,74 in)
50 D	
+ 80 D	
+ 80	
+ 120	
+ 160	
+ 200	
+ TOUCH 200	
+ FLASH 120	
+ FLASH 160 HF	
+ FLASH 200	
+ 300 HP	
+ 400 HP	
+ SURTRON EVAC	
+ SURTRON ABC	
+ TOUCH HP 50D	
+ TOUCH HP 80D	
+ TOUCH HP 80	
+ TOUCH HP 120	
+ TOUCH HP 160	
+ TOUCH HP 200	
+ TOUCH HP 300	
+ TOUCH HP 400	
+ TOUCH HP EVAC	







# SURGICAL PENCIL



**Description** Monopolar Handpiece  
**Cable Length** 3 m (118,11 in)  
**Size** 18,5x1,6x1,7 cm (7,2x0,62x0,66 in)  
**Weight** 0,03kg (0,06 lb)  
**Electrode Compatibility** ø2,4 mm (0,94 in)  
**Sterilization** Autoclavable  
**Sterilization cycles** 100



50 D	+	TOUCH 200	x	SURTRON EVAC
80 D	+	FLASH 120	x	SURTRON ABC
80	+	FLASH 160 HF	1	TOUCH HP 50D
120	+	FLASH 200	1	TOUCH HP 80D
160	+	300 HP	+	TOUCH HP 80
200	+	400 HP	+	TOUCH HP 120
TOUCH 200	+		+	TOUCH HP 160
FLASH 120	+		+	TOUCH HP 200
FLASH 160 HF	+		+	TOUCH HP 300
FLASH 200	+		+	TOUCH HP 400
300 HP	+		+	TOUCH HP EVAC
400 HP	+		+	
SURTRON EVAC	x			
SURTRON ABC	x			
TOUCH HP 50D	1			
TOUCH HP 80D	1			
TOUCH HP 80	+			
TOUCH HP 120	+			
TOUCH HP 160	+			
TOUCH HP 200	+			
TOUCH HP 300	+			
TOUCH HP 400	+			
TOUCH HP EVAC	x			

00206.00

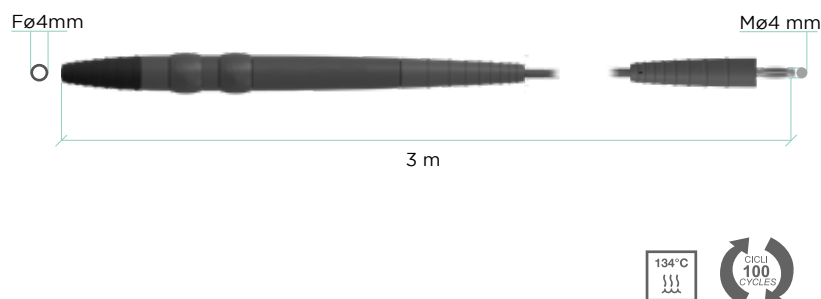


**Description** Monopolar Handpiece  
**Cable Length** 3m (118,11 in)  
**Size** 18,5x1,6x1,7 cm (7,2x0,62x0,66 in)  
**Weight** 0,03 kg (0,06 lb)  
**Electrode Compatibility** ø4 mm (1,15 in)  
**Sterilization** Autoclavable  
**Sterilization cycles** 100



50 D	+	TOUCH 200	x	SURTRON EVAC
80 D	+	FLASH 120	x	SURTRON ABC
80	+	FLASH 160 HF	1	TOUCH HP 50D
120	+	FLASH 200	1	TOUCH HP 80D
160	+	300 HP	+	TOUCH HP 80
200	+	400 HP	+	TOUCH HP 120
TOUCH 200	+		+	TOUCH HP 160
FLASH 120	+		+	TOUCH HP 200
FLASH 160 HF	+		+	TOUCH HP 300
FLASH 200	+		+	TOUCH HP 400
300 HP	+		+	TOUCH HP EVAC
400 HP	+		+	
SURTRON EVAC	x			
SURTRON ABC	x			
TOUCH HP 50D	1			
TOUCH HP 80D	1			
TOUCH HP 80	+			
TOUCH HP 120	+			
TOUCH HP 160	+			
TOUCH HP 200	+			
TOUCH HP 300	+			
TOUCH HP 400	+			
TOUCH HP EVAC	x			

00206.40

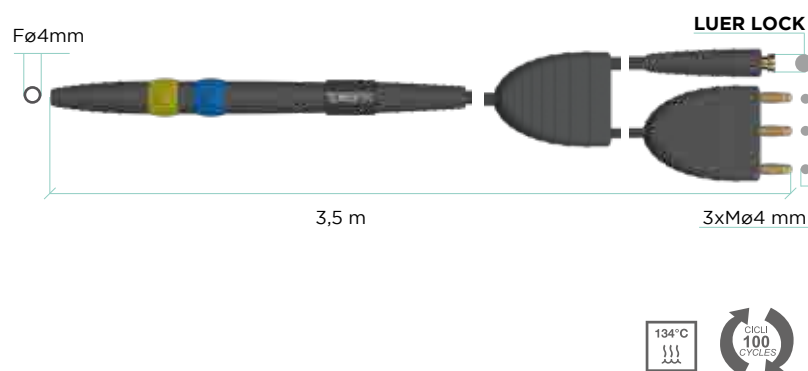


**Description** Handpiece for argon electrodes reusable  
**Cable Length** 3,5 m (137,8 in)  
**Size** 18,5x1,6x1,7 cm (7,2x0,62x0,66 in)  
**Weight** 0,03kg (0,06lb)  
**Electrode Compatibility** ø4 mm (1,15 in)  
**Sterilization** Autoclavable  
**Sterilization cycles** 100



50 D	+	TOUCH 200	x	SURTRON EVAC
80 D	+	FLASH 120	x	SURTRON ABC
80	+	FLASH 160 HF	1	TOUCH HP 50D
120	+	FLASH 200	1	TOUCH HP 80D
160	+	300 HP	+	TOUCH HP 80
200	+	400 HP	+	TOUCH HP 120
TOUCH 200	+		+	TOUCH HP 160
FLASH 120	+		+	TOUCH HP 200
FLASH 160 HF	+		+	TOUCH HP 300
FLASH 200	+		+	TOUCH HP 400
300 HP	+		+	TOUCH HP EVAC
400 HP	+		+	
SURTRON EVAC	x			
SURTRON ABC	1			
TOUCH HP 50D	x			
TOUCH HP 80D	x			
TOUCH HP 80	x			
TOUCH HP 120	x			
TOUCH HP 160	x			
TOUCH HP 200	x			
TOUCH HP 300	+			
TOUCH HP 400	+			
TOUCH HP EVAC	x			

00420.00

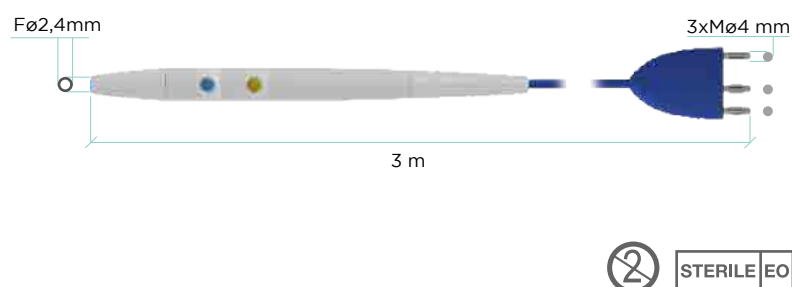


**Description** Disposable handle with finger switches (F4797)  
**Size** 14x2x1 cm (5,5x0,78x0,39 in)  
**Cable Length** 3m (118,11in)  
**Weight** 0,07 kg (0,15 lb)  
**Electrode Compatibility** ø2,4 mm (0,094 in)  
**Sterilization** Sterile EO  
**Sterilization cycles** 0



50 D	+	TOUCH 200	x	SURTRON EVAC
80 D	+	FLASH 120	x	SURTRON ABC
80	+	FLASH 160 HF	1	TOUCH HP 50D
120	+	FLASH 200	1	TOUCH HP 80D
160	+	300 HP	+	TOUCH HP 80
200	+	400 HP	+	TOUCH HP 120
TOUCH 200	+		+	TOUCH HP 160
FLASH 120	+		+	TOUCH HP 200
FLASH 160 HF	+		+	TOUCH HP 300
FLASH 200	+		+	TOUCH HP 400
300 HP	+		+	TOUCH HP EVAC
400 HP	+		+	
SURTRON EVAC	x			
SURTRON ABC	x			
TOUCH HP 50D	x			
TOUCH HP 80D	x			
TOUCH HP 80	+			
TOUCH HP 120	+			
TOUCH HP 160	+			
TOUCH HP 200	+			
TOUCH HP 300	5			
TOUCH HP 400	5			
TOUCH HP EVAC	x			

755VL





# FOOT SWITCH



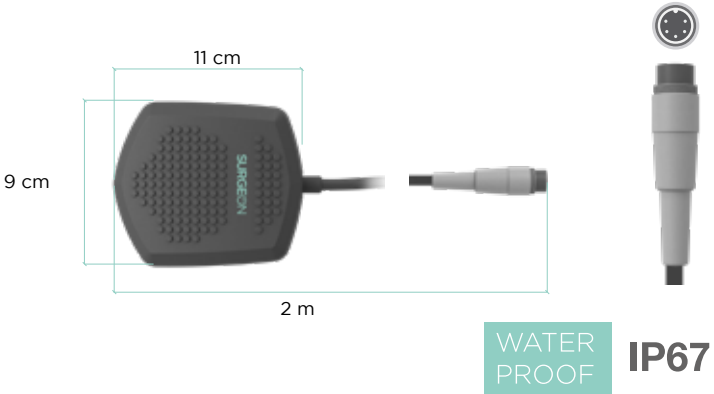
**Description**  
**Cable Length**  
**Size**  
**Weight**

Water-proof foot switch  
2 m (78,75 in)  
11x3,5x9 cm (7,2x0,62x0,66 in)  
0,3 kg (0,66 lb)



- 50 D
- 80 D
- 80
- 120
- 160
- 200
- TOUCH 200
- FLASH 120
- FLASH 160 HF
- FLASH 200
- 300 HP
- 400 HP
- + SURTRON EVAC
- + SURTRON ABC
- TOUCH HP 50D
- TOUCH HP 80D
- TOUCH HP 80
- TOUCH HP 120
- TOUCH HP 160
- TOUCH HP 200
- TOUCH HP 300
- TOUCH HP 400
- TOUCH HP EVAC

00304.00



WATER PROOF IP67

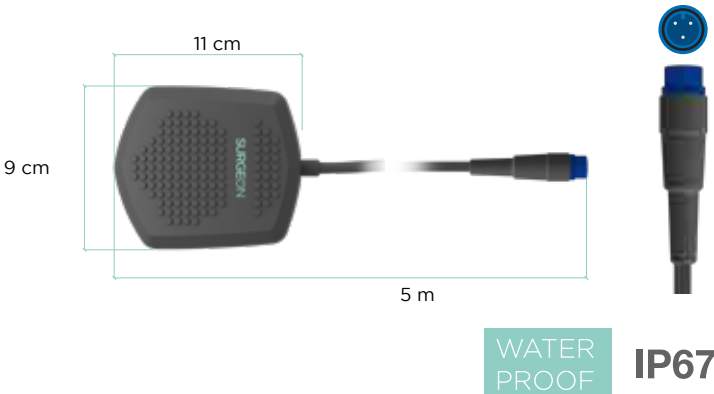
**Description**  
**Cable Length**  
**Size**  
**Weight**

Single water-proof foot switch (3 pins)  
5 m (196,85 in)  
11x3,5x9 cm (7,2x0,62x0,66 in)  
0,3 kg (0,66 lb)



- 50 D
- 80 D
- 80
- 120
- 160
- 200
- TOUCH 200
- FLASH 120
- FLASH 160 HF
- FLASH 200
- 300 HP
- 400 HP
- + SURTRON EVAC
- + SURTRON ABC
- TOUCH HP 50D
- TOUCH HP 80D
- TOUCH HP 80
- TOUCH HP 120
- TOUCH HP 160
- TOUCH HP 200
- TOUCH HP 300
- TOUCH HP 400
- TOUCH HP EVAC

00304.01



WATER PROOF IP67

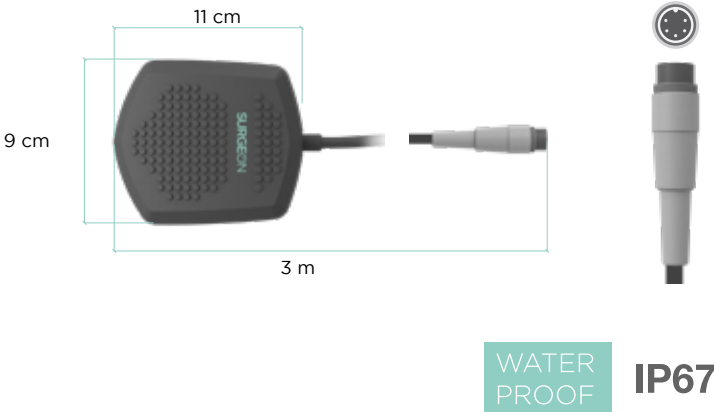
**Description**  
**Cable Length**  
**Size**  
**Weight**

Water-proof foot switch  
3 m (118,11 in)  
11x3,5x9 cm (7,2x0,62x0,66 in)  
0,3 kg (0,66 lb)



- 50 D
- 80 D
- 80
- 120
- 160
- 200
- TOUCH 200
- FLASH 120
- FLASH 160 HF
- FLASH 200
- 300 HP
- 400 HP
- + SURTRON EVAC
- + SURTRON ABC
- TOUCH HP 50D
- TOUCH HP 80D
- TOUCH HP 80
- TOUCH HP 120
- TOUCH HP 160
- TOUCH HP 200
- TOUCH HP 300
- TOUCH HP 400
- TOUCH HP EVAC

00304.04 S



WATER PROOF IP67

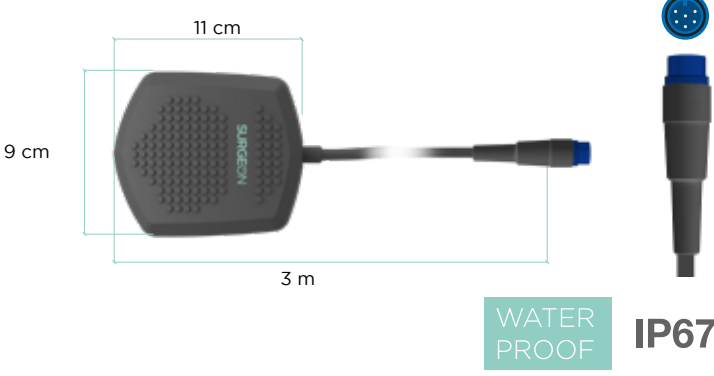
**Description**  
**Cable Length**  
**Size**  
**Weight**

Water-proof foot switch (6 pins)  
5 m (196,85 in)  
11x3,5x9 cm (7,2x0,62x0,66 in)  
0,3 kg (0,66 lb)



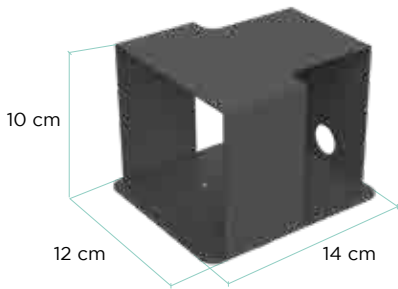
- 50 D
- 80 D
- 80
- 120
- 160
- 200
- TOUCH 200
- FLASH 120
- FLASH 160 HF
- FLASH 200
- 300 HP
- 400 HP
- + SURTRON EVAC
- + SURTRON ABC
- TOUCH HP 50D
- TOUCH HP 80D
- TOUCH HP 80
- TOUCH HP 120
- TOUCH HP 160
- TOUCH HP 200
- TOUCH HP 300
- TOUCH HP 400
- TOUCH HP EVAC

00304.06 S



WATER PROOF IP67

00304.PO



**Description** Protection for single foot switch  
**Cable Length** NO  
**Size** 12x10x14 cm (4,7x3,9x1,64 in)  
**Weight** 0,65 kg (0,143 lb)



- + 50 D
- + 80 D
- + 80
- + 120
- + 160
- + 200
- + TOUCH 200
- + FLASH 120
- + FLASH 160 HF
- + FLASH 200
- + 300 HP
- + 400 HP
- + SURTRON EVAC
- + SURTRON ABC
- + TOUCH HP 50D
- + TOUCH HP 80D
- + TOUCH HP 80
- + TOUCH HP 120
- + TOUCH HP 160
- + TOUCH HP 200
- + TOUCH HP 300
- + TOUCH HP 400
- + TOUCH HP EVAC

00305.03\_S



**Description** Double water proof foot switch (5 pins)  
**Cable Length** 5 m (196,85 in)  
**Size** 35x6x18 cm (13,78x2,36x7 in)  
**Weight** 1.3 kg (2,86lb)



- + 50 D
- + 80 D
- + 80
- + 120
- + 160
- + 200
- + TOUCH 200
- + FLASH 120
- + FLASH 160 HF
- + FLASH 200
- + 300 HP
- + 400 HP
- + SURTRON EVAC
- + SURTRON ABC
- + TOUCH HP 50D
- + TOUCH HP 80D
- + TOUCH HP 80
- + TOUCH HP 120
- + TOUCH HP 160
- + TOUCH HP 200
- + TOUCH HP 300
- + TOUCH HP 400
- + TOUCH HP EVAC

WATER PROOF  IP67

00305.04\_S



**Description** Waterproof double foot switch (3 pins)  
**Cable Length** 5 m (196,85 in)  
**Size** 35x6x18 cm (13,78x2,36x7 in)  
**Weight** 1.3 kg (2,86lb)



- + 50 D
- + 80 D
- + 80
- + 120
- + 160
- + 200
- + TOUCH 200
- + FLASH 120
- + FLASH 160 HF
- + FLASH 200
- + 300 HP
- + 400 HP
- + SURTRON EVAC
- + SURTRON ABC
- + TOUCH HP 50D
- + TOUCH HP 80D
- + TOUCH HP 80
- + TOUCH HP 120
- + TOUCH HP 160
- + TOUCH HP 200
- + TOUCH HP 300
- + TOUCH HP 400
- + TOUCH HP EVAC

WATER PROOF  IP67

**Description** Waterproof double foot switch (6 pins)  
**Cable Length** 5 m (196,85 in)  
**Size** 35x6x18 cm (13,78x2,36x7 in)  
**Weight** 1.3 kg (2,86lb)



50 D x  
 80 D x  
 80 x  
 120 x  
 160 x  
 200 x  
 TOUCH 200 x  
 FLASH 120 x  
 FLASH 160 HF x  
 FLASH 200 x  
 300 HP x  
 400 HP x  
 SURTRON EVAC x  
 SURTRON ABC x  
 TOUCH HP 50D x  
 TOUCH HP 80D x  
 TOUCH HP 80 x  
 TOUCH HP 120 x  
 TOUCH HP 160 x  
 TOUCH HP 200 x  
 TOUCH HP 300 x  
 TOUCH HP 400 x  
 TOUCH HP EVAC x

00305.06\_S



WATER  
PROOF



IP67

**Description** Waterproof double foot switch with selector (6 pins)  
**Cable Length** 5 m (196,85 in)  
**Size** 35x6x18 cm (13,78x2,36x7 in)  
**Weight** 1.3 kg (2,86lb)



50 D x  
 80 D x  
 80 x  
 120 x  
 160 x  
 200 x  
 + TOUCH 200 x  
 FLASH 120 x  
 FLASH 160 HF x  
 FLASH 200 x  
 300 HP x  
 400 HP x  
 SURTRON EVAC x  
 SURTRON ABC x  
 TOUCH HP 50D x  
 TOUCH HP 80D x  
 TOUCH HP 80 x  
 TOUCH HP 120 x  
 TOUCH HP 160 x  
 TOUCH HP 200 x  
 TOUCH HP 300 x  
 TOUCH HP 400 x  
 TOUCH HP EVAC x

00306.03\_S



WATER  
PROOF



IP67

**Description** Waterproof double foot switch with selector (6 pins)  
**Cable Length** 5 m (196,85 in)  
**Size** 35x6x18 cm (13,78x2,36x7 in)  
**Weight** 1.3 kg (2,86lb)



50 D x  
 80 D x  
 80 x  
 120 x  
 160 x  
 200 x  
 TOUCH 200 x  
 FLASH 120 x  
 FLASH 160 HF x  
 FLASH 200 x  
 300 HP x  
 400 HP x  
 SURTRON EVAC x  
 SURTRON ABC x  
 TOUCH HP 50D x  
 TOUCH HP 80D x  
 TOUCH HP 80 x  
 TOUCH HP 120 x  
 TOUCH HP 160 x  
 TOUCH HP 200 x  
 TOUCH HP 300 x  
 TOUCH HP 400 x  
 TOUCH HP EVAC x

00306.06\_S



WATER  
PROOF



IP67



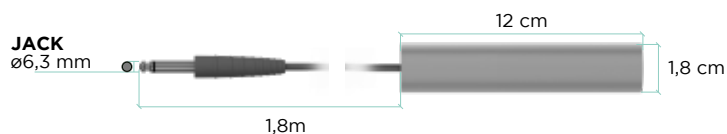
**NEU  
TRAL**

**Description** Rod neutral electrode with cable  
**Cable Length** 1,8 m (70,86 in)  
**Size** 12xø1,8 cm (4,72x0,7 in)  
**Weight** 0,1 kg (0,22 lb)  
**Sterilization** NO  
**Sterilization cycles** NO



+ 50 D  
 + 80 D  
 + 80  
 + 120  
 + 160  
 + 200  
 + TOUCH 200  
 + FLASH 120  
 + FLASH 160 HF  
 + FLASH 200  
 + 300 HP  
 + 400 HP  
 x SURTRON EVAC  
 x SURTRON ABC  
 + TOUCH HP 50D  
 + TOUCH HP 80D  
 + TOUCH HP 80  
 + TOUCH HP 120  
 + TOUCH HP 160  
 + TOUCH HP 200  
 + TOUCH HP 300  
 + TOUCH HP 400  
 x TOUCH HP EVAC

00400.00



MAX. 120W

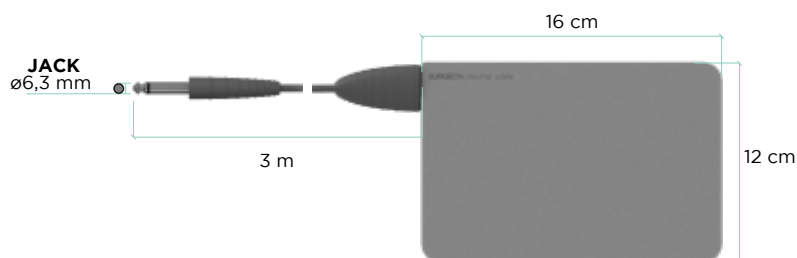
Integrated connection

**Description** Steel neutral electrode with cable  
**Cable Length** 3 m (118,11 in)  
**Size** 16x12 cm (6,3x4,7 in)  
**Weight** 0,13 kg (0,28 lb)  
**Sterilization** NO  
**Sterilization cycles** NO



+ 50 D  
 + 80 D  
 + 80  
 + 120  
 + 160  
 + 200  
 + TOUCH 200  
 + FLASH 120  
 + FLASH 160 HF  
 + FLASH 200  
 + 300 HP  
 + 400 HP  
 x SURTRON EVAC  
 x SURTRON ABC  
 + TOUCH HP 50D  
 + TOUCH HP 80D  
 + TOUCH HP 80  
 + TOUCH HP 120  
 + TOUCH HP 160  
 + TOUCH HP 200  
 + TOUCH HP 300  
 + TOUCH HP 400  
 x TOUCH HP EVAC

00401.00



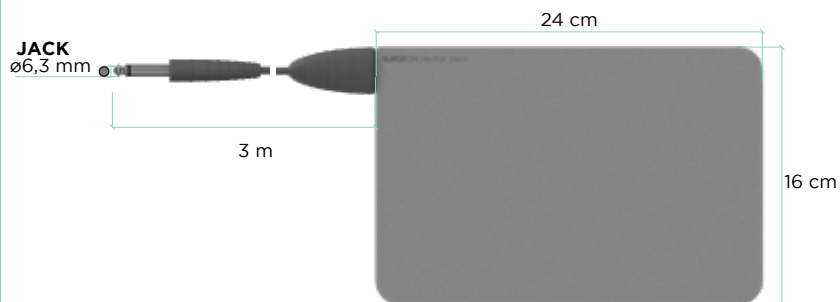
Integrated connection

**Description** Steel neutral electrode with cable  
**Cable Length** 3 m (118,11 in)  
**Size** 24x16 cm (9,4x6,3 in)  
**Weight** 0,13 kg (0,28 lb)  
**Sterilization** NO  
**Sterilization cycles** NO



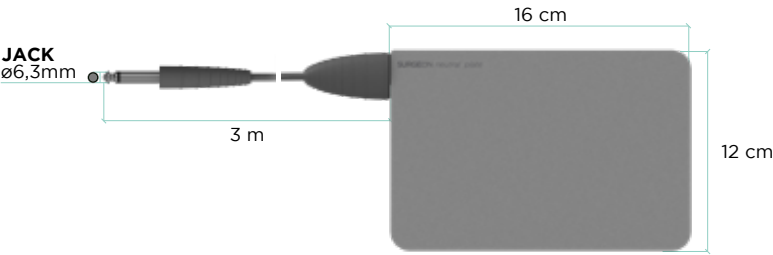
+ 50 D  
 + 80 D  
 + 80  
 + 120  
 + 160  
 + 200  
 + TOUCH 200  
 + FLASH 120  
 + FLASH 160 HF  
 + FLASH 200  
 + 300 HP  
 + 400 HP  
 x SURTRON EVAC  
 x SURTRON ABC  
 + TOUCH HP 50D  
 + TOUCH HP 80D  
 + TOUCH HP 80  
 + TOUCH HP 120  
 + TOUCH HP 160  
 + TOUCH HP 200  
 + TOUCH HP 300  
 + TOUCH HP 400  
 x TOUCH HP EVAC

00401.01



Integrated connection

00401.02



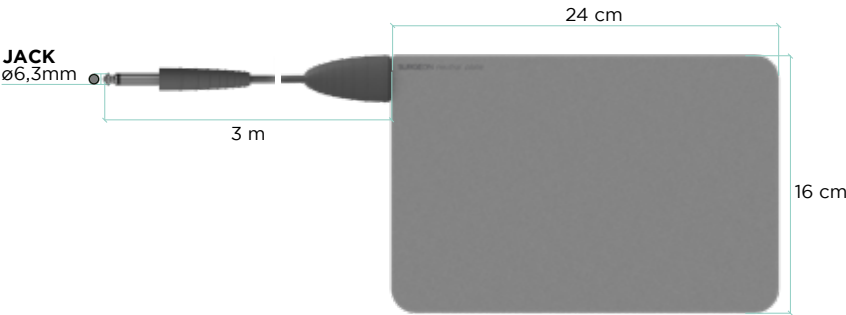
Integrated connection

Description	Steel neutral electrode autoclavable
Size WxHxD	16x12x0,4 cm (6,3x4,7x0,15 in)
Cable Lenght	3 m (118,11 in)
Weight	0,13 kg (0,28 lb)
Sterilization	Autoclavable
Sterilization cycles	100

 pcs: 1

+ 50 D	+ 80 D	+ 80	+ 120	+ 160	+ 200	+ TOUCH 200	+ FLASH 120	+ FLASH 160 HF	+ FLASH 200	+ 300 HP	+ 400 HP	x SURTRON EVAC	x SURTRON ABC	+ TOUCH HP 50D	+ TOUCH HP 80D	+ TOUCH HP 80	+ TOUCH HP 120	+ TOUCH HP 160	+ TOUCH HP 200	+ TOUCH HP 300	+ TOUCH HP 400	x TOUCH HP EVAC
--------	--------	------	-------	-------	-------	-------------	-------------	----------------	-------------	----------	----------	----------------	---------------	----------------	----------------	---------------	----------------	----------------	----------------	----------------	----------------	-----------------

00401.03



Integrated connection

Description	Steel neutral electrode autoclavable
Size WxHxD	24x16x0,4 cm (9,4x6,3x0,15 in)
Cable Lenght	3 m (118,11 in)
Weight	0,13 kg (0,28 lb)
Sterilization	Autoclavable
Sterilization cycles	100

 pcs: 1

+ 50 D	+ 80 D	+ 80	+ 120	+ 160	+ 200	+ TOUCH 200	+ FLASH 120	+ FLASH 160 HF	+ FLASH 200	+ 300 HP	+ 400 HP	x SURTRON EVAC	x SURTRON ABC	+ TOUCH HP 50D	+ TOUCH HP 80D	+ TOUCH HP 80	+ TOUCH HP 120	+ TOUCH HP 160	+ TOUCH HP 200	+ TOUCH HP 300	+ TOUCH HP 400	x TOUCH HP EVAC
--------	--------	------	-------	-------	-------	-------------	-------------	----------------	-------------	----------	----------	----------------	---------------	----------------	----------------	---------------	----------------	----------------	----------------	----------------	----------------	-----------------

00401.10



Description	Steel neutral electrode FLEX
Size WxHxD	12x21x0,2 cm (4,7x8,2x0,078 in)
Cable Lenght	NO
Weight	0,10 Kg (0,23 lb)
Sterilization	Autoclavable
Sterilization cycles	100
Compatibility	00404.08, 00404.09, 00404.10, 00404.11

 pcs: 1

+ 50 D	+ 80 D	+ 80	+ 120	+ 160	+ 200	+ TOUCH 200	+ FLASH 120	+ FLASH 160 HF	+ FLASH 200	+ 300 HP	+ 400 HP	x SURTRON EVAC	x SURTRON ABC	+ TOUCH HP 50D	+ TOUCH HP 80D	+ TOUCH HP 80	+ TOUCH HP 120	+ TOUCH HP 160	+ TOUCH HP 200	+ TOUCH HP 300	+ TOUCH HP 400	x TOUCH HP EVAC
--------	--------	------	-------	-------	-------	-------------	-------------	----------------	-------------	----------	----------	----------------	---------------	----------------	----------------	---------------	----------------	----------------	----------------	----------------	----------------	-----------------

**Description** Steel neutral electrode FLEX with cable

**Size WxHxD** 12x21x0,2 cm (4,7x8,2x0,078 in)

**Cable Lenght** 3m (118,11 in)

**Weight** 0,19 Kg (0,42lb)

**Sterilization** NO

**Sterilization cycles** NO



+ 50 D  
+ 80 D  
+ 80  
+ 120  
+ 160  
+ 200  
+ TOUCH 200  
+ FLASH 120  
+ FLASH 160 HF  
+ FLASH 200  
+ 300 HP  
+ 400 HP  
x SURTRON EVAC  
x SURTRON ABC  
+ TOUCH HP 50D  
+ TOUCH HP 80D  
+ TOUCH HP 80  
+ TOUCH HP 120  
+ TOUCH HP 160  
+ TOUCH HP 200  
+ TOUCH HP 300  
+ TOUCH HP 400  
x TOUCH HP EVAC

00401.11



Integrated connection

**Description** Steel neutral electrode FLEX with cable autoclavable

**Size WxHxD** 12x21x0,2 cm (4,7x8,2x0,078 in)

**Cable Lenght** 3m (118,11 in)

**Weight** 0,19 Kg (0,42lb)

**Sterilization** Autoclavable

**Sterilization cycles** 100



+ 50 D  
+ 80 D  
+ 80  
+ 120  
+ 160  
+ 200  
+ TOUCH 200  
+ FLASH 120  
+ FLASH 160  
+ FLASH 200  
+ 300 HP  
+ 400 HP  
x SURTRON EVAC  
x SURTRON ABC  
+ TOUCH HP 50D  
+ TOUCH HP 80D  
+ TOUCH HP 80  
+ TOUCH HP 120  
+ TOUCH HP 160  
+ TOUCH HP 200  
+ TOUCH HP 300  
+ TOUCH HP 400  
x TOUCH HP EVAC

00401.12



Integrated connection

134°C



**Description** Steel neutral electrode FLEX S

**Size WxHxD** 12x21x0,2 cm (4,7x8,2x0,078 in)

**Cable Lenght** NO

**Weight** 0,10 Kg (0,23 lb)

**Sterilization** Autoclavable

**Sterilization cycles** 100

**Compatibility** 00404.08, 00404.09, 00404.10, 00404.11



x 50 D  
+ 80 D  
+ 80  
+ 120  
+ 160  
+ 200  
+ TOUCH 200  
+ FLASH 120  
+ FLASH 160 HF  
+ FLASH 200  
+ 300 HP  
+ 400 HP  
x SURTRON EVAC  
x SURTRON ABC  
+ TOUCH HP 50D  
+ TOUCH HP 80D  
+ TOUCH HP 80  
+ TOUCH HP 120  
+ TOUCH HP 160  
+ TOUCH HP 200  
+ TOUCH HP 300  
+ TOUCH HP 400  
x TOUCH HP EVAC

00401.20



134°C







**Description** Rod neutral electrode  
**Size WxHxD** 14x2x2 cm (5,5x0,78x0,78 in)  
**Cable Lenght** NO  
**Weight** 0,4 Kg (0,88 lb)  
**Sterilization** Autoclavable  
**Sterilization cycles** 100  
**Compatibility** 00404.02, 00404.04



- + 50 D
- + x 80 D
- + x 80
- + x 120
- + x 160
- + x 200
- + x TOUCH 200
- + x FLASH 120
- + x FLASH 160 HF
- + x FLASH 200
- + x 300 HP
- + x 400 HP
- + x SURTRON EVAC
- + x SURTRON ABC
- + x TOUCH HP 50D
- + x TOUCH HP 80D
- + x TOUCH HP 80
- + x TOUCH HP 120
- + x TOUCH HP 160
- + x TOUCH HP 200
- + x TOUCH HP 300
- + x TOUCH HP 400
- + x TOUCH HP EVAC

00403.02

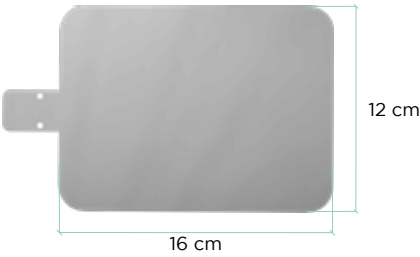


**Description** Steel neutral electrode  
**Size WxHxD** 16x12x0,02 cm (6,3x4,7x0,008 in)  
**Cable Lenght** NO  
**Weight** 0,1 kg (0,22 lb)  
**Sterilization** Autoclavable  
**Sterilization cycles** 100  
**Compatibility** 00404.08, 00404.09, 00404.10, 00404.11



- + 50 D
- + 1 80 D
- + 1 80
- + 1 120
- + 1 160
- + 1 200
- + 1 TOUCH 200
- + 1 FLASH 120
- + 1 FLASH 160 HF
- + 1 FLASH 200
- + 1 300 HP
- + 1 400 HP
- + x SURTRON EVAC
- + x SURTRON ABC
- + 1 TOUCH HP 50D
- + 1 TOUCH HP 80D
- + 1 TOUCH HP 80
- + 1 TOUCH HP 120
- + 1 TOUCH HP 160
- + 1 TOUCH HP 200
- + 1 TOUCH HP 300
- + 1 TOUCH HP 400
- + x TOUCH HP EVAC

5365A



**Description** Steel neutral electrode  
**Size WxHxD** 24x16x0,02 cm (9,4x6,3x0,008 in)  
**Cable Lenght** NO  
**Weight** 0,1 kg (0,22 lb)  
**Sterilization** Autoclavable  
**Sterilization cycles** 100  
**Compatibility** 00404.08, 00404.09, 00404.10, 00404.11

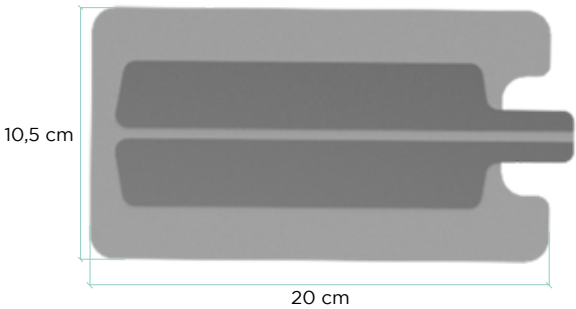


- + 50 D
- + 80 D
- + 80
- + 120
- + 160
- + 200
- + TOUCH 200
- + FLASH 120
- + FLASH 160 HF
- + FLASH 200
- + 300 HP
- + 400 HP
- + SURTRON EVAC
- + SURTRON ABC
- + TOUCH HP 50D
- + TOUCH HP 80D
- + TOUCH HP 80
- + TOUCH HP 120
- + TOUCH HP 160
- + TOUCH HP 200
- + TOUCH HP 300
- + TOUCH HP 400
- + TOUCH HP EVAC

6429A



F7920



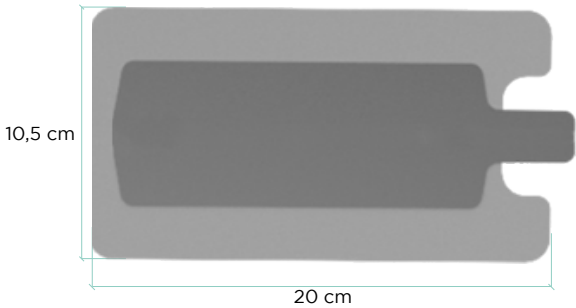
Description	Disposable split neutral electrode (F7820)
Size WxHxD	20x10,5x0,2 cm (7,8x4,1x0,078 in)
Cable Lenght	NO
Weight	0,01 Kg (0,02 lb)
Sterilization	NO
Sterilization cycles	NO
Compatibility	00404.08, 00404.09, 00404.10, 00404.11



pcs: 1

x	50 D	2	TOUCH 200	x	SURTRON EVAC
+	80 D	2	FLASH 120	x	SURTRON ABC
+	80	2	FLASH 160 HF	x	TOUCH HP 50D
+	120	2	FLASH 200	+	TOUCH HP 80D
+	160	5	300 HP	+	TOUCH HP 80
+	200	5	400 HP	+	TOUCH HP 120
+	200	x	TOUCH 200	+	TOUCH HP 160
+	200	x	TOUCH 200	+	TOUCH HP 200
+	200	x	TOUCH 200	+	TOUCH HP 300
+	200	5	TOUCH HP 400	+	TOUCH HP 400
+	200	x	TOUCH HP EVAC		

O350



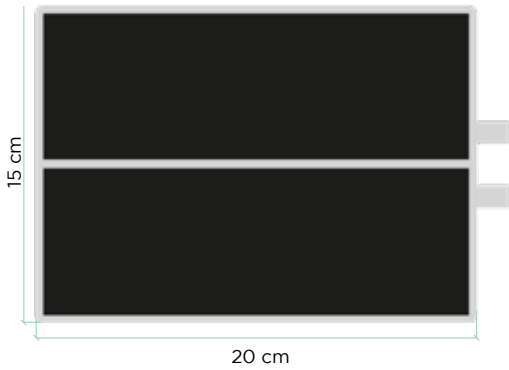
Description	Disposable neutral electrode
Size WxHxD	20x10,5x0,2cm (7,8x4,1x0,078in)
Cable Lenght	NO
Weight	0,01 Kg (0,02lb)
Sterilization	NO
Sterilisation cycles	NO
Compatibility	00404.08, 00404.09, 00404.10, 00404.11



pcs: 1

+	50 D	2	TOUCH 200	x	SURTRON EVAC
+	80 D	2	FLASH 120	x	SURTRON ABC
+	80	2	FLASH 160 HF	+	TOUCH HP 50D
+	120	2	FLASH 200	+	TOUCH HP 80D
+	160	+	300 HP	+	TOUCH HP 80
+	200	+	400 HP	+	TOUCH HP 120
+	200	x	TOUCH 200	+	TOUCH HP 160
+	200	x	TOUCH 200	+	TOUCH HP 200
+	200	+	TOUCH HP 300	+	TOUCH HP 300
+	200	+	TOUCH HP 400	+	TOUCH HP 400
+	200	x	TOUCH HP EVAC		

F7930



Description	Conductive rubber neutral electrode
Size WxHxD	20x10,5x0,4 cm (7,8x4,1x0,15 in)
Cable Lenght	NO
Weight	0,1 Kg (0,2lb)
Sterilization	NO
Sterilization cycles	NO
Compatibility	00404.07



pcs: 1

x	50 D	2	TOUCH 200	x	SURTRON EVAC
+	80 D	2	FLASH 120	x	SURTRON ABC
+	80	2	FLASH 160	x	TOUCH HP 50D
+	120	2	FLASH 200	+	TOUCH HP 80D
+	160	+	300 HP	+	TOUCH HP 80
+	200	+	400 HP	+	TOUCH HP 120
+	200	x	TOUCH 200	+	TOUCH HP 160
+	200	x	TOUCH 200	+	TOUCH HP 200
+	200	+	TOUCH HP 300	+	TOUCH HP 300
+	200	+	TOUCH HP 400	+	TOUCH HP 400
+	200	x	TOUCH HP EVAC		

F7520



Description	Electrode cleaning sponge
Size WxHxD	5x5 cm (1.96x1.96 in)
Weight	0,02Kg (0,04lb)
Sterilization	NO
Sterilization cycles	NO



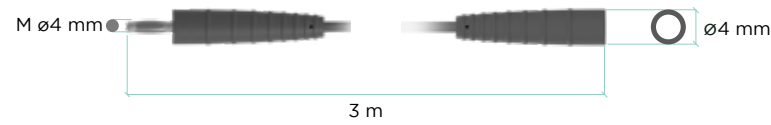
pcs: 1

+	50 D	2	TOUCH 200	x	SURTRON EVAC
+	80 D	2	FLASH 120	x	SURTRON ABC
+	80	2	FLASH 160	+	TOUCH HP 50D
+	120	2	FLASH 200	+	TOUCH HP 80D
+	160	1	300 HP	+	TOUCH HP 80
+	200	1	400 HP	+	TOUCH HP 120
+	200	x	TOUCH 200	+	TOUCH HP 160
+	200	x	TOUCH 200	+	TOUCH HP 200
+	200	1	TOUCH HP 300	+	TOUCH HP 300
+	200	1	TOUCH HP 400	+	TOUCH HP 400
+	200	x	TOUCH HP EVAC		



# CON NECT ION

00402.00



Description	Monopolar Cable M4-F4
Weight	0,06 kg (0,13lb)
Cable Lenght	3 m (118,11 in)
Sterilization	Autoclavable
Sterilization cycles	100

pcs: 1	
50 D	+
80 D	+
80	+
120	+
160	+
200	+
TOUCH 200	+
FLASH 120	+
FLASH 160 HF	+
FLASH 200	+
300 HP	+
400 HP	+
SURTRON EVAC	x
SURTRON ABC	x
TOUCH HP 50D	+
TOUCH HP 80D	+
TOUCH HP 80	+
TOUCH HP 120	+
TOUCH HP 160	+
TOUCH HP 200	+
TOUCH HP 300	+
TOUCH HP 400	+
TOUCH HP EVAC	x

00402.01



Description	Monopolar Cable M4-F2,8
Weight	0,06 kg (0,13 lb)
Cable Lenght	3 m (118,11 in)
Sterilization	Autoclavable
Sterilization cycles	100

pcs: 1	
50 D	+
80 D	+
80	+
120	+
160	+
200	+
TOUCH 200	+
FLASH 120	+
FLASH 160 HF	+
FLASH 200	+
300 HP	+
400 HP	+
SURTRON EVAC	x
SURTRON ABC	x
TOUCH HP 50D	+
TOUCH HP 80D	+
TOUCH HP 80	+
TOUCH HP 120	+
TOUCH HP 160	+
TOUCH HP 200	+
TOUCH HP 300	+
TOUCH HP 400	+
TOUCH HP EVAC	x

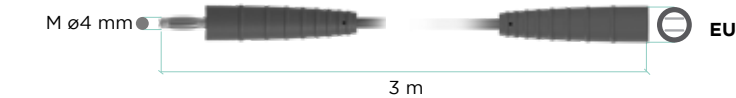
00402.02



Description	Monopolar Cable M4-MP4
Weight	0,06 kg (0,13 lb)
Cable Lenght	3 m (118,11 in)
Sterilization	Autoclavable
Sterilization cycles	100

pcs: 1	
50 D	+
80 D	+
80	+
120	+
160	+
200	+
TOUCH 200	+
FLASH 120	+
FLASH 160 HF	+
FLASH 200	+
300 HP	+
400 HP	+
SURTRON EVAC	x
SURTRON ABC	x
TOUCH HP 50D	+
TOUCH HP 80D	+
TOUCH HP 80	+
TOUCH HP 120	+
TOUCH HP 160	+
TOUCH HP 200	+
TOUCH HP 300	+
TOUCH HP 400	+
TOUCH HP EVAC	x

00402.03



Description	Monopolar Cable M4-EU
Weight	0,06 kg (0,13 lb)
Cable Lenght	3 m (118,11 in)
Sterilization	Autoclavable
Sterilization cycles	100

pcs: 1	
50 D	+
80 D	+
80	+
120	+
160	+
200	+
TOUCH 200	+
FLASH 120	+
FLASH 160 HF	+
FLASH 200	+
300 HP	+
400 HP	+
SURTRON EVAC	x
SURTRON ABC	x
TOUCH HP 50D	+
TOUCH HP 80D	+
TOUCH HP 80	+
TOUCH HP 120	+
TOUCH HP 160	+
TOUCH HP 200	+
TOUCH HP 300	+
TOUCH HP 400	+
TOUCH HP EVAC	x

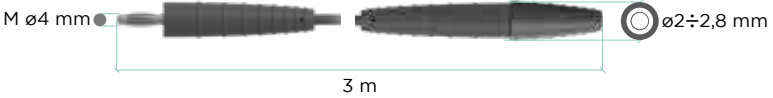


<b>Description</b>	Monopolar Cable M4-F2+2,8 mm
<b>Weight</b>	0,06 kg (0,13 lb)
<b>Cable Lenght</b>	3 m (118,11 in)
<b>Sterilization</b>	Autoclavable
<b>Sterilization cycles</b>	100

00402.04



+ 50 D	x	TOUCH 200	x	SURTRON EVAC
+ 80 D	x	FLASH 120	x	SURTRON ABC
+ 80	x	FLASH 160	x	TOUCH HP 50D
+ 120	x	FLASH 200	x	TOUCH HP 80D
+ 160	x	300 HP	x	TOUCH HP 80
+ 200	x	400 HP	x	TOUCH HP 120
+ TOUCH 200	x		x	TOUCH HP 160
+ FLASH 120	x		x	TOUCH HP 200
+ FLASH 160	x		x	TOUCH HP 300
+ FLASH 200	x		x	TOUCH HP 400
+ 300 HP	x		x	TOUCH HP EVAC
+ 400 HP	x		x	
x SURTRON EVAC				
x SURTRON ABC				
+ TOUCH HP 50D	x			
+ TOUCH HP 80D	x			
+ TOUCH HP 80	x			
+ TOUCH HP 120	x			
+ TOUCH HP 160	x			
+ TOUCH HP 200	x			
+ TOUCH HP 300	x			
+ TOUCH HP 400	x			
+ TOUCH HP EVAC	x			

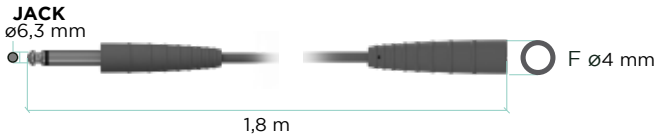


<b>Description</b>	Monopolar Cable J6.3-F4
<b>Weight</b>	0,06 kg (0,13 lb)
<b>Cable Lenght</b>	1,8 m (70,86 in)
<b>Sterilization</b>	NO
<b>Sterilization cycles</b>	NO

00404.02



+ 50 D	1	x	TOUCH 200	x	SURTRON EVAC
+ 80 D	x		FLASH 120	x	SURTRON ABC
+ 80	x		FLASH 160	x	TOUCH HP 50D
+ 120	x		FLASH 200	x	TOUCH HP 80D
+ 160	x		300 HP	x	TOUCH HP 80
+ 200	x		400 HP	x	TOUCH HP 120
+ TOUCH 200	x			x	TOUCH HP 160
+ FLASH 120	x			x	TOUCH HP 200
+ FLASH 160	x			x	TOUCH HP 300
+ FLASH 200	x			x	TOUCH HP 400
+ 300 HP	x			x	TOUCH HP EVAC
+ 400 HP	x			x	
x SURTRON EVAC					
x SURTRON ABC					
+ TOUCH HP 50D	1	x			
+ TOUCH HP 80D	x				
+ TOUCH HP 80	x				
+ TOUCH HP 120	x				
+ TOUCH HP 160	x				
+ TOUCH HP 200	x				
+ TOUCH HP 300	x				
+ TOUCH HP 400	x				
+ TOUCH HP EVAC	x				

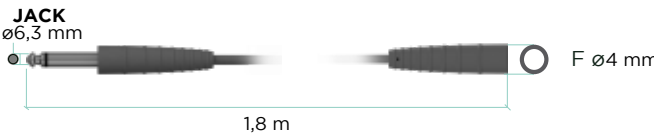


<b>Description</b>	Cable for rod neutral electrode autoclavable
<b>Weight</b>	0,06 kg (0,13 lb)
<b>Cable Lenght</b>	3 m (118 in)
<b>Unit Connection</b>	4 mm (0,157 in)
<b>Sterilization</b>	Autoclavable
<b>Sterilization cycles</b>	100

00404.04



+ 50 D	x	TOUCH 200	x	SURTRON EVAC
+ 80 D	x	FLASH 120	x	SURTRON ABC
+ 80	x	FLASH 160 HF	x	TOUCH HP 50D
+ 120	x	FLASH 200	x	TOUCH HP 80D
+ 160	x	300 HP	x	TOUCH HP 80
+ 200	x	400 HP	x	TOUCH HP 120
+ TOUCH 200	x		x	TOUCH HP 160
+ FLASH 120	x		x	TOUCH HP 200
+ FLASH 160 HF	x		x	TOUCH HP 300
+ FLASH 200	x		x	TOUCH HP 400
+ 300 HP	x		x	TOUCH HP EVAC
+ 400 HP	x		x	
x SURTRON EVAC				
x SURTRON ABC				
+ TOUCH HP 50D	x			
+ TOUCH HP 80D	x			
+ TOUCH HP 80	x			
+ TOUCH HP 120	x			
+ TOUCH HP 160	x			
+ TOUCH HP 200	x			
+ TOUCH HP 300	x			
+ TOUCH HP 400	x			
+ TOUCH HP EVAC	x			

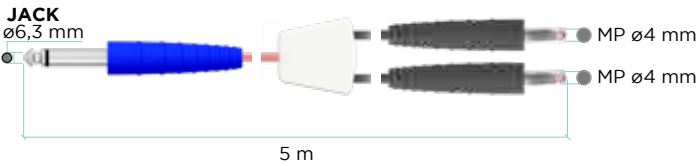


<b>Description</b>	Cable for neutral plate J6.3-MP4 (F7922)
<b>Cable Lenght</b>	5m (196,85 in)
<b>Compatibility</b>	F7930 F7915

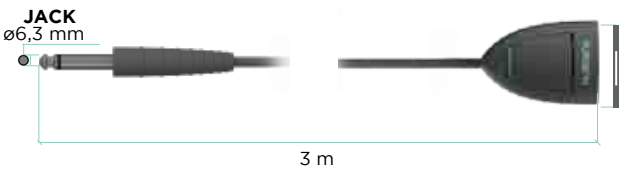
00404.07



+ 50 D	x	TOUCH 200	x	SURTRON EVAC
+ 80 D	x	FLASH 120	x	SURTRON ABC
+ 80	x	FLASH 160 HF	x	TOUCH HP 50D
+ 120	x	FLASH 200	x	TOUCH HP 80D
+ 160	x	300 HP	x	TOUCH HP 80
+ 200	x	400 HP	x	TOUCH HP 120
+ TOUCH 200	x		x	TOUCH HP 160
+ FLASH 120	x		x	TOUCH HP 200
+ FLASH 160 HF	x		x	TOUCH HP 300
+ FLASH 200	x		x	TOUCH HP 400
+ 300 HP	x		x	TOUCH HP EVAC
+ 400 HP	x		x	
x SURTRON EVAC				
x SURTRON ABC				
+ TOUCH HP 50D	x			
+ TOUCH HP 80D	x			
+ TOUCH HP 80	x			
+ TOUCH HP 120	x			
+ TOUCH HP 160	x			
+ TOUCH HP 200	x			
+ TOUCH HP 300	x			
+ TOUCH HP 400	x			
+ TOUCH HP EVAC	x			



00404.08\_S

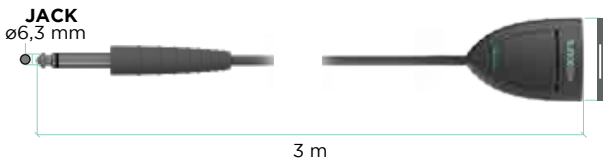


**Description** Cable for neutral electrode disposable type 5365/6429/FLEX  
**Weight** 0,06 kg (0,13 lb)  
**Cable Lenght** 3 m (118,11 in)  
**Sterilization** NO  
**Sterilization cycles** NO  
**Compatibility** 0350, F790, 00401.10, 00401.20, 5365A, 6429A

pcs: 1

+ 50 D	+ 80 D	+ 80	+ 120	+ 160	+ 200	+ TOUCH 200	+ FLASH 120	+ FLASH 160 HF	+ FLASH 200	+ 300 HP	+ 400 HP	x SURTRON EVAC	x SURTRON ABC	+ TOUCH HP 50D	+ TOUCH HP 80D	+ TOUCH HP 80	+ TOUCH HP 120	+ TOUCH HP 160	+ TOUCH HP 200	+ TOUCH HP 300	+ TOUCH HP 400	x TOUCH HP EVAC
--------	--------	------	-------	-------	-------	-------------	-------------	----------------	-------------	----------	----------	----------------	---------------	----------------	----------------	---------------	----------------	----------------	----------------	----------------	----------------	-----------------

00404.09



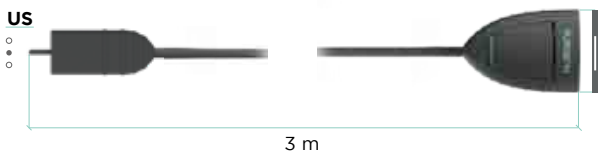
**Description** Cable for connection neutral disposable 5365-6429/FLEX FLEX S AUTOCLAVE  
**Weight** 0,06 kg (0,13 lb)  
**Cable Lenght** 3 m (118,11 in)  
**Sterilization** Autoclavable  
**Sterilization cycles** 100  
**Compatibility** 0350, F790, 00401.10, 00401.20, 5365A, 6429A


pcs: 1

+ 50 D	+ 80 D	+ 80	+ 120	+ 160	+ 200	+ TOUCH 200	+ FLASH 120	+ FLASH 160 HF	+ FLASH 200	+ 300 HP	+ 400 HP	x SURTRON EVAC	x SURTRON ABC	+ TOUCH HP 50D	+ TOUCH HP 80D	+ TOUCH HP 80	+ TOUCH HP 120	+ TOUCH HP 160	+ TOUCH HP 200	+ TOUCH HP 300	+ TOUCH HP 400	x TOUCH HP EVAC
--------	--------	------	-------	-------	-------	-------------	-------------	----------------	-------------	----------	----------	----------------	---------------	----------------	----------------	---------------	----------------	----------------	----------------	----------------	----------------	-----------------



00404.10



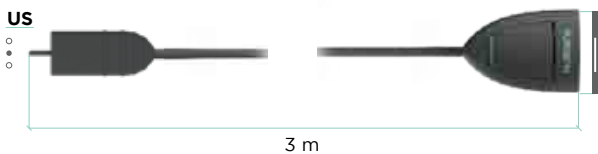
+A  compatible only if you use 00498.06 adapter


**Description** Cable for neutral plate US type  
**Weight** 0,06 kg (0,13 lb)  
**Cable Lenght** 3 m (169,85 in)  
**Sterilization** NO  
**Sterilization cycles** NO  
**Compatibility** 0350, F790, 00401.10, 00401.20, 5365A, 6429A

pcs: 1

+ 50 D	+ 80 D	+ 80	+ 120	+ 160	+ 200	+ TOUCH 200	+ FLASH 120	+ FLASH 160 HF	+ FLASH 200	+ 300 HP	+ 400 HP	x SURTRON EVAC	x SURTRON ABC	+ TOUCH HP 50D	+ TOUCH HP 80D	+ TOUCH HP 80	+ TOUCH HP 120	+ TOUCH HP 160	+ TOUCH HP 200	+ TOUCH HP 300	+ TOUCH HP 400	x TOUCH HP EVAC
--------	--------	------	-------	-------	-------	-------------	-------------	----------------	-------------	----------	----------	----------------	---------------	----------------	----------------	---------------	----------------	----------------	----------------	----------------	----------------	-----------------

00404.11



+A  compatible only if you use 00498.06 adapter

**Description** Cable for neutral plate US type AUTOCLAVE  
**Weight** 0,06 kg (0,13 lb)  
**Cable Lenght** 3 m (169,85 in)  
**Sterilization** Autoclavable  
**Sterilization cycles** 100  
**Compatibility** 0350, F790, 00401.10, 00401.20, 5365A, 6429A

pcs: 1

+ 50 D	+ 80 D	+ 80	+ 120	+ 160	+ 200	+ TOUCH 200	+ FLASH 120	+ FLASH 160 HF	+ FLASH 200	+ 300 HP	+ 400 HP	x SURTRON EVAC	x SURTRON ABC	+ TOUCH HP 50D	+ TOUCH HP 80D	+ TOUCH HP 80	+ TOUCH HP 120	+ TOUCH HP 160	+ TOUCH HP 200	+ TOUCH HP 300	+ TOUCH HP 400	x TOUCH HP EVAC
--------	--------	------	-------	-------	-------	-------------	-------------	----------------	-------------	----------	----------	----------------	---------------	----------------	----------------	---------------	----------------	----------------	----------------	----------------	----------------	-----------------

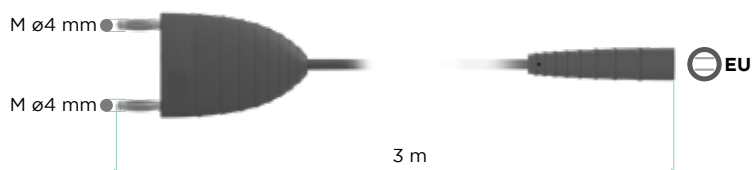


**Description** Bipolar cable EUR  
**Weight** 0,06 kg (0,13 lb)  
**Cable Length** 3 m (118,11 in)  
**Sterilization** Autoclavable  
**Sterilization cycles** 100  
**Compatibility** 310 Bipolar Forceps series



50 D x  
 80 D x  
 80 A +  
 120 A +  
 160 A +  
 200 +  
 TOUCH 200  
 FLASH 120  
 FLASH 160 HF  
 FLASH 200  
 300 HP  
 400 HP  
 SURTRON EVAC  
 SURTRON ABC  
 TOUCH HP 50D  
 TOUCH HP 80D  
 TOUCH HP 80  
 TOUCH HP 120  
 TOUCH HP 160  
 TOUCH HP 200  
 TOUCH HP 300  
 TOUCH HP 400  
 TOUCH HP EVAC

00411.00

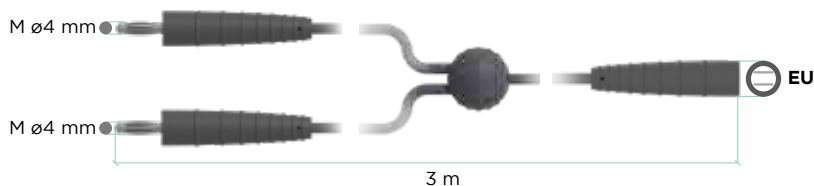


**Description** Bipolar cable TWIN  
**Weight** 0,06 kg (0,13 lb)  
**Cable Length** 3 m (118,11 in)  
**Sterilization** Autoclavable  
**Sterilization cycles** 100  
**Compatibility** 310 Bipolar Forceps series



50 D x  
 80 D x  
 80 A +  
 120 A +  
 160 A +  
 200 +  
 TOUCH 200  
 FLASH 120  
 FLASH 160 HF  
 FLASH 200  
 300 HP  
 400 HP  
 SURTRON EVAC  
 SURTRON ABC  
 TOUCH HP 50D  
 TOUCH HP 80D  
 TOUCH HP 80  
 TOUCH HP 120  
 TOUCH HP 160  
 TOUCH HP 200  
 TOUCH HP 300  
 TOUCH HP 400  
 TOUCH HP EVAC

00412.00

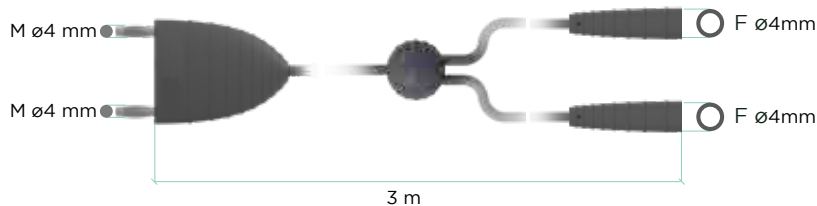


**Description** Artery Sealer Bipolar cable  
**Weight** 0,06 kg (0,13 lb)  
**Cable Length** 3 m (118,11 in)  
**Sterilization** Autoclavable  
**Sterilization cycles** 100  
**Compatibility** 110-750NS, 110-755NS, 110-760NS,



50 D x  
 80 D x  
 80 A +  
 120 A +  
 160 A +  
 200 +  
 TOUCH 200  
 FLASH 120  
 FLASH 160 HF  
 FLASH 200  
 300 HP  
 400 HP  
 SURTRON EVAC  
 SURTRON ABC  
 TOUCH HP 50D  
 TOUCH HP 80D  
 TOUCH HP 80  
 TOUCH HP 120  
 TOUCH HP 160  
 TOUCH HP 200  
 TOUCH HP 300  
 TOUCH HP 400  
 TOUCH HP EVAC

00413.00

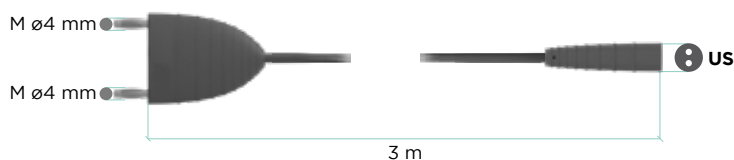


**Description** Bipolar cable US 3m  
**Weight** 0,60 g (0,13 lb)  
**Cable Length** 3 m (118,11 in)  
**Sterilization** Autoclavable  
**Sterilization cycles** 100  
**Compatibility** 110-700

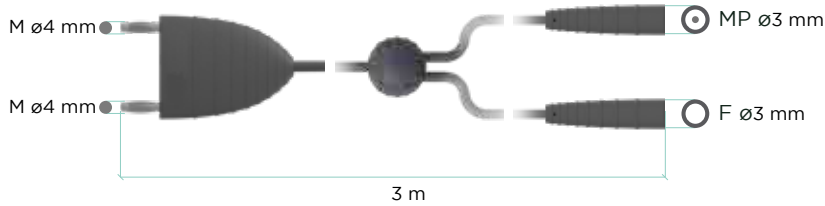


50 D x  
 80 D x  
 80 A +  
 120 A +  
 160 A +  
 200 +  
 TOUCH 200  
 FLASH 120  
 FLASH 160 HF  
 FLASH 200  
 300 HP  
 400 HP  
 SURTRON EVAC  
 SURTRON ABC  
 TOUCH HP 50D  
 TOUCH HP 80D  
 TOUCH HP 80  
 TOUCH HP 120  
 TOUCH HP 160  
 TOUCH HP 200  
 TOUCH HP 300  
 TOUCH HP 400  
 TOUCH HP EVAC

00414.00



## 00415.00



+A



*compatible only if you use 00498.00 adapter*

**Description**

**Weight**

**Cable Length**

**Sterilization**

**Sterilization cycles**



Bipolar cable ENDO (MP3 - F3)

0,06 kg (0,13 lb)

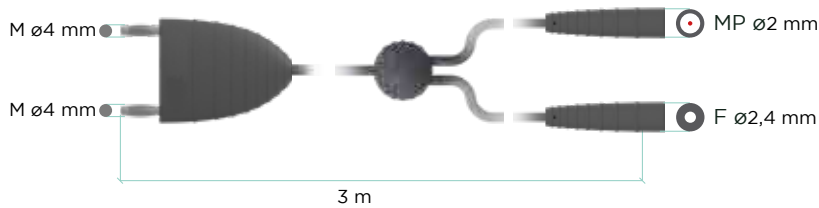
3 m (118,11 in)

Autoclavable

100

50 D  
x x 80 D  
A + 80  
A + 120  
A + 160  
A + 200  
+ TOUCH 200  
+ FLASH 120  
+ FLASH 160 HF  
+ FLASH 200  
+ 300 HP  
+ 400 HP  
x SURTRON EVAC  
x SURTRON ABC  
x TOUCH HP 50D  
x TOUCH HP 80D  
+ TOUCH HP 80  
A + TOUCH HP 120  
A + TOUCH HP 160  
+ TOUCH HP 200  
+ TOUCH HP 300  
+ TOUCH HP 400  
x TOUCH HP EVAC

## 00416.00



+A



*compatible only if you use 00498.00 adapter*

**Description**

**Weight**

**Cable Length**

**Sterilization**

**Sterilization cycles**



Bipolar cable ENDO (MP2 - F2,4)

0,06 kg (0,13 lb)

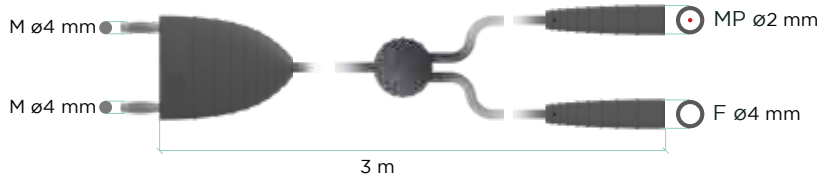
3 m (118,11 in)

Autoclavable

100

50 D  
x x 80 D  
A + 80  
A + 120  
A + 160  
A + 200  
+ TOUCH 200  
+ FLASH 120  
+ FLASH 160 HF  
+ FLASH 200  
+ 300 HP  
+ 400 HP  
x SURTRON EVAC  
x SURTRON ABC  
x TOUCH HP 50D  
x TOUCH HP 80D  
+ TOUCH HP 80  
A + TOUCH HP 120  
A + TOUCH HP 160  
+ TOUCH HP 200  
+ TOUCH HP 300  
+ TOUCH HP 400  
x TOUCH HP EVAC

## 00417.00



+A



*compatible only if you use 00498.00 adapter*

**Description**

**Weight**

**Cable Length**

**Sterilization**

**Sterilization cycles**



Bipolar cable ENDO3 (MP2-F4)

0,06 kg (0,13 lb)

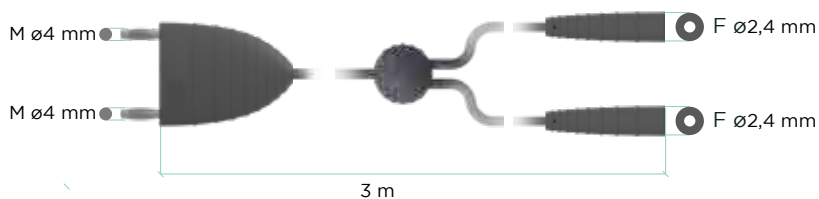
3 m (118,11 in)

Autoclavable

100

50 D  
x x 80 D  
A + 80  
A + 120  
A + 160  
A + 200  
+ TOUCH 200  
+ FLASH 120  
+ FLASH 160 HF  
+ FLASH 200  
+ 300 HP  
+ 400 HP  
x SURTRON EVAC  
x SURTRON ABC  
x TOUCH HP 50D  
x TOUCH HP 80D  
+ TOUCH HP 80  
A + TOUCH HP 120  
A + TOUCH HP 160  
+ TOUCH HP 200  
+ TOUCH HP 300  
+ TOUCH HP 400  
x TOUCH HP EVAC

## 00418.00



+A



*compatible only if you use 00498.00 adapter*

**Description**

**Weight**

**Cable Length**

**Sterilization**

**Sterilization cycles**



Bipolar cable ENDO3 (2xM4 2xF2,4)

0,06 kg (0,13 lb)

3 m (118,11 in)

Autoclavable

100

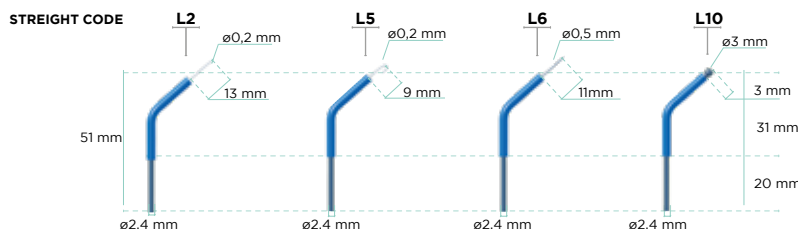
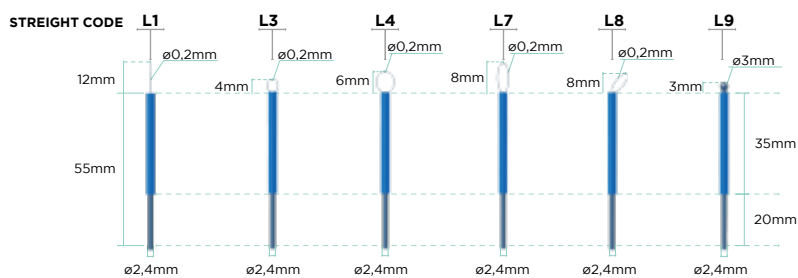
50 D  
x x 80 D  
A + 80  
A + 120  
A + 160  
A + 200  
+ TOUCH 200  
+ FLASH 120  
+ FLASH 160 HF  
+ FLASH 200  
+ 300 HP  
+ 400 HP  
x SURTRON EVAC  
x SURTRON ABC  
x TOUCH HP 50D  
x TOUCH HP 80D  
+ TOUCH HP 80  
A + TOUCH HP 120  
A + TOUCH HP 160  
+ TOUCH HP 200  
+ TOUCH HP 300  
+ TOUCH HP 400  
x TOUCH HP EVAC





# ELEC TRODE

# 00500.00



**Description** Kit of assorted electrode length 5 cm (10pcs)

**SINGLE ITEM**

**500500.L1:** Straight thin wire electrode (5pcs)

**500500.L3:** Loop electrode  $\varnothing 4$  mm (5pcs)

**500500.L4:** Loop electrode  $\varnothing 6$  mm (5pcs)

**500500.L7:** Drop electrode length (5pcs)

**500500.L8:** Noose electrode length (5pcs)

**500500.L9:** Straight ball electrode  $\varnothing 3$  mm (5pcs)

**500500.L2:** Bent thin wire electrode (5pcs)

**500500.L5:** Drop electrode length (5pcs)

**500500.L6:** Bent thick wire electrode (5pcs)

**500500.L10:** Bent ball electrode  $\varnothing 3$  mm (5pcs)

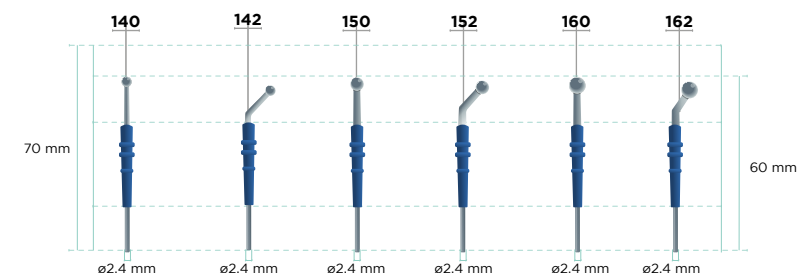
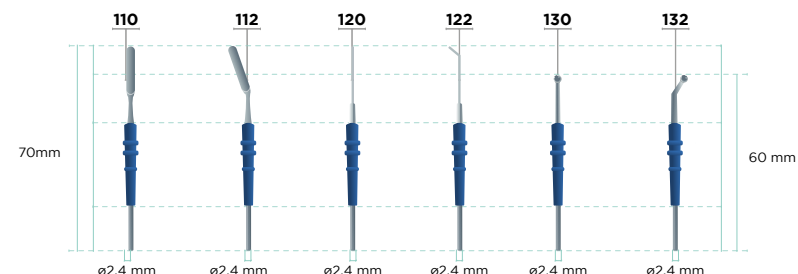
**Compatibility** 00205.00, 00206.00, 755VL

50 D	TOUCH 200	SURTRON EVAC
80 D	FLASH 120	SURTRON ABC
80	FLASH 160 HF	TOUCH HP 50D
120	FLASH 200	TOUCH HP 80D
160	300 HP	TOUCH HP 80
200	400 HP	TOUCH HP 120
TOUCH 200		TOUCH HP 160
FLASH 120		TOUCH HP 200
FLASH 160 HF		TOUCH HP 300
FLASH 200		TOUCH HP 400
300 HP		TOUCH HP EVAC
400 HP		
SURTRON EVAC		
SURTRON ABC		
TOUCH HP 50D		
TOUCH HP 80D		
TOUCH HP 80		
TOUCH HP 120		
TOUCH HP 160		
TOUCH HP 200		
TOUCH HP 300		
TOUCH HP 400		
TOUCH HP EVAC		



kit 00500.00: assorted pcs 10  
from 00500.L1 to 00500.L10

# 152 Short



**Description**

152-110 Blade Electrode 7 cm

152-120 Needle Electrode 7 cm

152-150 Ball Electrode  $\varnothing 4$  mm 6 cm

50 D	TOUCH 200	SURTRON EVAC
80 D	FLASH 120	SURTRON ABC
80	FLASH 160 HF	TOUCH HP 50D
120	FLASH 200	TOUCH HP 80D
160	300 HP	TOUCH HP 80
200	400 HP	TOUCH HP 120
TOUCH 200		TOUCH HP 160
FLASH 120		TOUCH HP 200
FLASH 160 HF		TOUCH HP 300
FLASH 200		TOUCH HP 400
300 HP		TOUCH HP EVAC
400 HP		
SURTRON EVAC		
SURTRON ABC		
TOUCH HP 50D		
TOUCH HP 80D		
TOUCH HP 80		
TOUCH HP 120		
TOUCH HP 160		
TOUCH HP 200		
TOUCH HP 300		
TOUCH HP 400		
TOUCH HP EVAC		

152-112 Blade Curved Electrode 7 cm

152-122 Needle Electrode 7 cm

152-130 Ball Electrode  $\varnothing 2$  mm 6 cm

152-132 Ball Curved Electrode  $\varnothing 2$  mm 5 cm

152-140 Ball Electrode  $\varnothing 3$  mm 6 cm

152-142 Ball Curved Electrode  $\varnothing 3$  mm 6 cm

50 D	TOUCH 200	SURTRON EVAC
80 D	FLASH 120	SURTRON ABC
80	FLASH 160 HF	TOUCH HP 50D
120	FLASH 200	TOUCH HP 80D
160	300 HP	TOUCH HP 80
200	400 HP	TOUCH HP 120
TOUCH 200		TOUCH HP 160
FLASH 120		TOUCH HP 200
FLASH 160 HF		TOUCH HP 300
FLASH 200		TOUCH HP 400
300 HP		TOUCH HP EVAC
400 HP		
SURTRON EVAC		
SURTRON ABC		
TOUCH HP 50D		
TOUCH HP 80D		
TOUCH HP 80		
TOUCH HP 120		
TOUCH HP 160		
TOUCH HP 200		
TOUCH HP 300		
TOUCH HP 400		
TOUCH HP EVAC		

152-152 Ball Curved Electrode  $\varnothing 4$  mm 6 cm

50 D	TOUCH 200	SURTRON EVAC
80 D	FLASH 120	SURTRON ABC
80	FLASH 160 HF	TOUCH HP 50D
120	FLASH 200	TOUCH HP 80D
160	300 HP	TOUCH HP 80
200	400 HP	TOUCH HP 120
TOUCH 200		TOUCH HP 160
FLASH 120		TOUCH HP 200
FLASH 160 HF		TOUCH HP 300
FLASH 200		TOUCH HP 400
300 HP		TOUCH HP EVAC
400 HP		
SURTRON EVAC		
SURTRON ABC		
TOUCH HP 50D		
TOUCH HP 80D		
TOUCH HP 80		
TOUCH HP 120		
TOUCH HP 160		
TOUCH HP 200		
TOUCH HP 300		
TOUCH HP 400		
TOUCH HP EVAC		

152-160 Ball Electrode  $\varnothing 5$  mm 6 cm

152-162 Ball Curved Electrode  $\varnothing 5$  mm 6 cm

50 D	TOUCH 200	SURTRON EVAC
80 D	FLASH 120	SURTRON ABC
80	FLASH 160 HF	TOUCH HP 50D
120	FLASH 200	TOUCH HP 80D
160	300 HP	TOUCH HP 80
200	400 HP	TOUCH HP 120
TOUCH 200		TOUCH HP 160
FLASH 120		TOUCH HP 200
FLASH 160 HF		TOUCH HP 300
FLASH 200		TOUCH HP 400
300 HP		TOUCH HP EVAC
400 HP		
SURTRON EVAC		
SURTRON ABC		
TOUCH HP 50D		
TOUCH HP 80D		
TOUCH HP 80		
TOUCH HP 120		
TOUCH HP 160		
TOUCH HP 200		
TOUCH HP 300		
TOUCH HP 400		
TOUCH HP EVAC		

**Compatibility** 00205.00, 00206.00, 755VL

**Description** Kit of assorted electrode length 10 cm (10pcs)

**SINGLE ITEM**

500500.L1/L: Straight thin wire electrode length (5pcs)

500500.L3/L: Loop electrode ø4 mm length (5pcs)

500500.L4/L: Loop electrode ø6 mm (5pcs)

500500.L7/L: Drop electrode length (5pcs)

500500.L8/L: Noose electrode length (5pcs)

500500.L9/L: Straight ball electrode ø3 mm (5pcs)

500500.L2/L: Bent thin wire electrode (5pcs)

500500.L5/L: Bent hook electrode (5pcs)

500500.L6/L: Bent thick wire electrode (5pcs)

500500.L10/L: Bent ball electrode ø3 mm (5pcs)

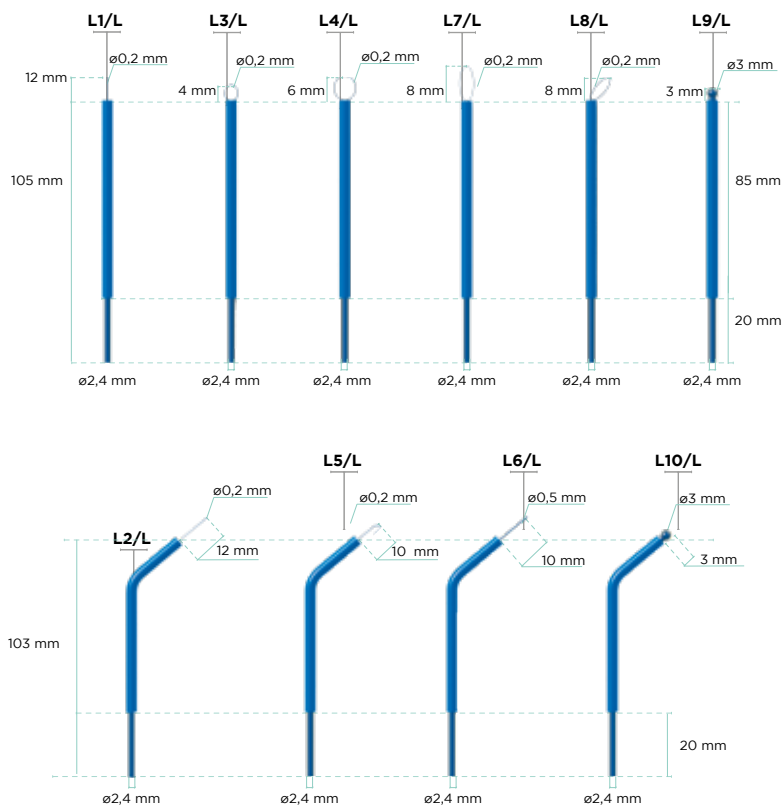
**Compatibility** 00205.00, 00206.00, 755VL

+ 50 D  
+ 80 D  
+ 80  
+ 120  
+ 160  
+ 200  
+ TOUCH 200  
+ FLASH 120  
+ FLASH 160  
+ FLASH 200  
x 300 HP  
x 400 HP  
x SURTRON EVAC  
x SURTRON ABC  
+ TOUCH HP 50D  
+ TOUCH HP 80D  
+ TOUCH HP 80  
+ TOUCH HP 120  
+ TOUCH HP 160  
+ TOUCH HP 200  
x TOUCH HP 300  
x TOUCH HP 400  
x TOUCH HP EVAC



kit 00500.00/L: assorted pcs 10  
from 00500.L1/L to 00500.L10/L

00500.00/L



**Description**

152-115 Blade Electrode 16 cm

+ 50 D  
+ 80 D  
+ 80  
+ 120  
+ 160  
+ 200  
+ TOUCH 200  
+ FLASH 120  
+ FLASH 160  
+ FLASH 200  
x 300 HP  
x 400 HP  
x SURTRON EVAC  
x SURTRON ABC  
+ TOUCH HP 50D  
+ TOUCH HP 80D  
+ TOUCH HP 80  
+ TOUCH HP 120  
+ TOUCH HP 160  
+ TOUCH HP 200  
x TOUCH HP 300  
x TOUCH HP 400  
x TOUCH HP EVAC

152-125 Needle Electrode 13 cm

152-145 Ball Electrode ø3mm 13 cm

152-175-10 Loop Electrode 10x10mm I.14 cm

152-190-13 Loop Electrode 20x13mm I.14 cm

152-190-20 Loop Electrode 20x20mm I.15 cm

152-195 Conization Electrode 13 cm

+ 50 D  
+ 80 D  
+ 80  
+ 120  
+ 160  
+ 200  
+ TOUCH 200  
+ FLASH 120  
+ FLASH 160  
+ FLASH 200  
x 300 HP  
x 400 HP  
x SURTRON EVAC  
x SURTRON ABC  
+ TOUCH HP 50D  
+ TOUCH HP 80D  
+ TOUCH HP 80  
+ TOUCH HP 120  
+ TOUCH HP 160  
+ TOUCH HP 200  
+ TOUCH HP 300  
+ TOUCH HP 400  
x TOUCH HP EVAC

152-165 Ball Electrode ø5mm 14 cm

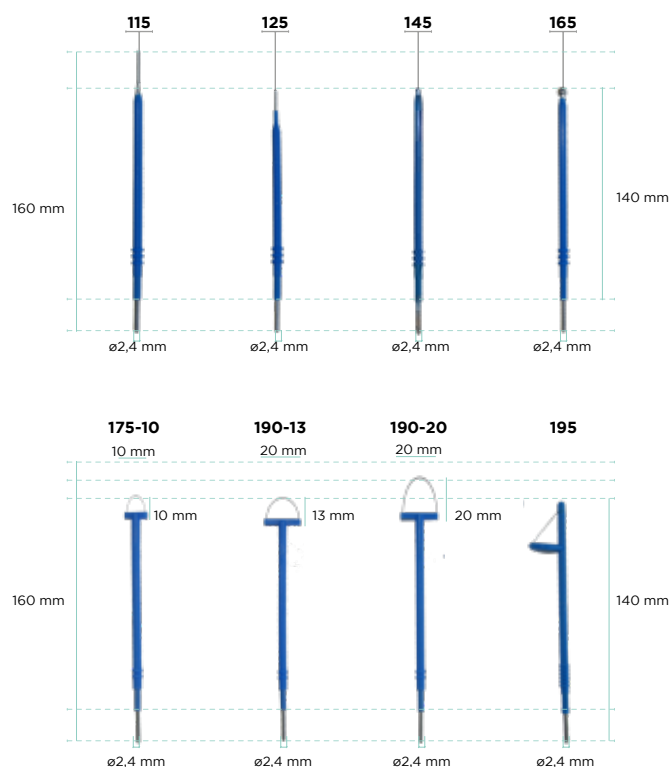
+ 50 D  
+ 80 D  
+ 80  
+ 120  
+ 160  
+ 200  
+ TOUCH 200  
+ FLASH 120  
+ FLASH 160  
+ FLASH 200  
x 300 HP  
x 400 HP  
x SURTRON EVAC  
x SURTRON ABC  
+ TOUCH HP 50D  
+ TOUCH HP 80D  
+ TOUCH HP 80  
+ TOUCH HP 120  
+ TOUCH HP 160  
+ TOUCH HP 200  
+ TOUCH HP 300  
+ TOUCH HP 400  
x TOUCH HP EVAC



pcs: 1

**Compatibility** 00205.00, 00206.00, 755VL

152 Long



# 00420.10



7,5 cm



**Description** Argon coagulation electrode 75mm  
**Weight** 0,075 kg (0,16 lb)  
**Size** 7,5 cm (2,9 in)  
**Sterilization** Autoclavable  
**Sterilisation cycles** 30

50 D x  
80 D x  
80 x  
120 x  
160 x  
200 x  
TOUCH 200 x  
FLASH 120 x  
FLASH 160 HF x  
FLASH 200 x  
300 HP x  
400 HP x  
SURTRON EVAC x  
SURTRON ABC +  
TOUCH HP 50D x  
TOUCH HP 80D x  
TOUCH HP 80 x  
TOUCH HP 120 x  
TOUCH HP 160 x  
TOUCH HP 200 x  
TOUCH HP 300 +  
TOUCH HP 400 +  
TOUCH HP EVAC x



pcs: 1

# 00420.12



15 cm



**Description** Argon coagulation electrode 150mm  
**Weight** 0,15 kg (0,33 lb)  
**Size** 15 cm (5,9 in)  
**Sterilization** Autoclavable  
**Sterilisation cycles** 30

50 D x  
80 D x  
80 x  
120 x  
160 x  
200 x  
TOUCH 200 x  
FLASH 120 x  
FLASH 160 HF x  
FLASH 200 x  
300 HP x  
400 HP x  
SURTRON EVAC x  
SURTRON ABC 1  
TOUCH HP 50D x  
TOUCH HP 80D x  
TOUCH HP 80 x  
TOUCH HP 120 x  
TOUCH HP 160 x  
TOUCH HP 200 x  
TOUCH HP 300 +  
TOUCH HP 400 +  
TOUCH HP EVAC x



pcs: 1

# 00420.14



37 cm



**Description** Argon coagulation electrode 370mm  
**Weight** 0,30 kg (0,66 lb)  
**Size** 37 cm (14,5 in)  
**Sterilization** Autoclavable  
**Sterilisation cycles** 30

50 D x  
80 D x  
80 x  
120 x  
160 x  
200 x  
TOUCH 200 x  
FLASH 120 x  
FLASH 160 HF x  
FLASH 200 x  
300 HP x  
400 HP x  
SURTRON EVAC x  
SURTRON ABC +  
TOUCH HP 50D x  
TOUCH HP 80D x  
TOUCH HP 80 x  
TOUCH HP 120 x  
TOUCH HP 160 x  
TOUCH HP 200 x  
TOUCH HP 300 +  
TOUCH HP 400 +  
TOUCH HP EVAC x

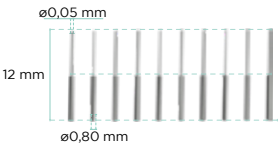


pcs: 1

**Description** Needles for micro-surgery length 1cm  
**Weight** 0,002 kg (0,004 lb)  
**Size** 12x0,05x0,8 mm (0,47x0,002x0,03 in)  
**Sterilization** STERILE  
**Sterilisation cycles** NO

500500.L11

- + 50 D
- + 80 D
- + 80
- + 120
- + 160
- + 200
- + TOUCH 200
- FLASH 120
- FLASH 160 HF
- 1 FLASH 200
- x 300 HP
- x 400 HP
- x SURTRON EVAC
- x SURTRON ABC
- + TOUCH HP 50D
- + TOUCH HP 80D
- + TOUCH HP 80
- + TOUCH HP 120
- + TOUCH HP 160
- + TOUCH HP 200
- x TOUCH HP 300
- x TOUCH HP 400
- x TOUCH HP EVAC



STERILE EO

**Description** Electrodes and handle support  
**Size** 8x8x5 cm (3,14x3,14x1,96 in)  
**Weight** 0,02 kg (0,04 lb)  
**Color** RAL7035 (Light Gray)

00202.00

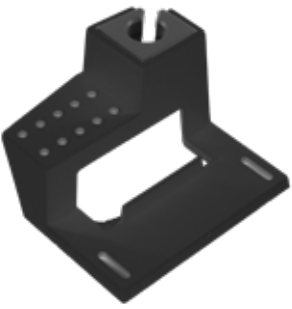
- 1 50 D
- 1 80 D
- 1 80
- 1 120
- 1 160
- 1 200
- 1 TOUCH 200
- FLASH 120
- FLASH 160 HF
- 1 FLASH 200
- x 300 HP
- x 400 HP
- x SURTRON EVAC
- x SURTRON ABC
- + TOUCH HP 50D
- + TOUCH HP 80D
- + TOUCH HP 80
- + TOUCH HP 120
- + TOUCH HP 160
- + TOUCH HP 200
- x TOUCH HP 300
- x TOUCH HP 400
- x TOUCH HP EVAC



**Description** Electrodes and handle support  
**Size** 8x8x5 cm (3,14x3,14x1,96 in)  
**Weight** 0,02 kg (0,04 lb)  
**Color** RAL9005 (Intense Black)

00202.00-9005

- + 50 D
- + 80 D
- + 80
- + 120
- + 160
- + 200
- + TOUCH 200
- + FLASH 120
- + FLASH 160 HF
- + FLASH 200
- x 300 HP
- x 400 HP
- x SURTRON EVAC
- x SURTRON ABC
- 1 TOUCH HP 50D
- 1 TOUCH HP 80D
- 1 TOUCH HP 80
- 1 TOUCH HP 120
- 1 TOUCH HP 160
- x TOUCH HP 200
- x TOUCH HP 300
- x TOUCH HP 400
- x TOUCH HP EVAC





# ADAP TERS

**Description** Bipolar adapter  
**Weight** 0,03 kg (0,06 lb)  
**Size** 4,5x1,5x7,5 cm (1,8x0,6x3 in)  
**Sterilization** NO  
**Sterilization cycles** NO  
**Compatibility** 00414.00, 00418.00

x	50 D	x	TOUCH 200	x	SURTRON EVAC
x	80 D	x	FLASH 120	x	SURTRON ABC
x	80	x	FLASH 160 HF	x	TOUCH HP 50D
x	120	x	FLASH 200	x	TOUCH HP 80D
x	160	x	300 HP	x	TOUCH HP 80
x	200	x	400 HP	x	TOUCH HP 120
x		x		x	TOUCH HP 160
x		x		x	TOUCH HP 200
x		x		x	TOUCH HP 300
x		x		x	TOUCH HP 400
x		x		x	TOUCH HP EVAC

00498.00



**Description** 2001 bipolar adapter selector (until 2009)  
**Weight** 0,03 kg (0,06 lb)  
**Size** 3x3x8,5 cm (1,2x1,2x3 in)  
**Sterilization** NO  
**Sterilization cycles** NO  
**Compatibility** 00412.00

x	50 D	x	TOUCH 200	x	SURTRON EVAC
x	80 D	x	FLASH 120	x	SURTRON ABC
x	80	x	FLASH 160 HF	x	TOUCH HP 50D
x	120	x	FLASH 200	x	TOUCH HP 80D
x	160	x	300 HP	x	TOUCH HP 80
x	200	x	400 HP	x	TOUCH HP 120
x		x		x	TOUCH HP 160
x		x		x	TOUCH HP 200
x		x		x	TOUCH HP 300
x		x		x	TOUCH HP 400
x		x		x	TOUCH HP EVAC

00498.04



**Description** Adapter for neutral electrode 6,3mm/Valley  
**Weight** 0,015kg (0,03lb)  
**Size** 2,2x2,2x7,2 cm (0,86x0,86x2,8 in)  
**Sterilization** NO  
**Sterilization cycles** NO  
**Compatibility** 00404.10, 00404.11

x	50 D	x	TOUCH 200	x	SURTRON EVAC
x	80 D	x	FLASH 120	x	SURTRON ABC
x	80	x	FLASH 160 HF	x	TOUCH HP 50D
x	120	x	FLASH 200	x	TOUCH HP 80D
x	160	x	300 HP	x	TOUCH HP 80
x	200	x	400 HP	x	TOUCH HP 120
x		x		x	TOUCH HP 160
x		x		x	TOUCH HP 200
x		x		x	TOUCH HP 300
x		x		x	TOUCH HP 400
x		x		x	TOUCH HP EVAC

00498.06



**Description** Bipolar adapter EUR/2xM2,5  
**Weight** 0,015 kg (0,03 lb)  
**Size** 2,2x2,2x7,2 cm (0,86x0,86x2,8 in)  
**Sterilization** NO  
**Sterilization cycles** NO

x	50 D	x	TOUCH 200	x	SURTRON EVAC
x	80 D	x	FLASH 120	x	SURTRON ABC
x	80	x	FLASH 160 HF	x	TOUCH HP 50D
x	120	x	FLASH 200	x	TOUCH HP 80D
x	160	x	300 HP	x	TOUCH HP 80
x	200	x	400 HP	x	TOUCH HP 120
x		x		x	TOUCH HP 160
x		x		x	TOUCH HP 200
x		x		x	TOUCH HP 300
x		x		x	TOUCH HP 400
x		x		x	TOUCH HP EVAC

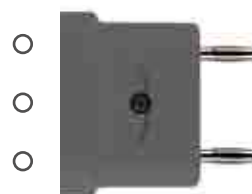
00498.08



**Description** Bipolar adapter EUR/3xM4  
**Weight** 0,015 kg (0,03 lb)  
**Size** 2,2x2,2x7,2 cm (0,86x0,86x2,8 in)  
**Sterilization** NO  
**Sterilization cycles** NO

x	50 D	x	TOUCH 200	x	SURTRON EVAC
x	80 D	x	FLASH 120	x	SURTRON ABC
x	80	x	FLASH 160 HF	x	TOUCH HP 50D
x	120	x	FLASH 200	x	TOUCH HP 80D
x	160	x	300 HP	x	TOUCH HP 80
x	200	x	400 HP	x	TOUCH HP 120
x		x		x	TOUCH HP 160
x		x		x	TOUCH HP 200
x		x		x	TOUCH HP 300
x		x		x	TOUCH HP 400
x		x		x	TOUCH HP EVAC

00498.10







BI  
PO  
LAR

MO  
NO  
PO  
LAR



**Description** US Bi-Turbinate Electrode  
**Size** 18,5x2x2 cm (7,3x0,78x78 in)  
**Weight** 0,07 kg (0,154 lb)  
**Tip Thickness** 0.8 mm (0,0314 in)  
**Sterilization** Autoclavable  
**Sterilization cycles** 30  
**Compatibility** 00414.00



pcs: 1

50 D x  
 80 D x  
 80 x  
 120 x  
 160 x  
 200 x  
 + TOUCH 200 x  
 + FLASH 120 x  
 + FLASH 160 HF x  
 + FLASH 200 x  
 + 300 HP x  
 + 400 HP x  
 + SURTRON EVAC x  
 + SURTRON ABC x  
 + TOUCH HP 50D x  
 + TOUCH HP 80D x  
 + TOUCH HP 80 x  
 + TOUCH HP 120 x  
 + TOUCH HP 160 x  
 + TOUCH HP 200 x  
 + TOUCH HP 300 x  
 + TOUCH HP 400 x  
 + TOUCH HP EVAC x

110-700



**Description** Bipolar Forceps Artery Sealer  
**Size** 27 cm (10,62 in)  
**Weight** 0,1 kg (0,22 lb)  
**Sterilization** Autoclavable  
**Sterilization cycles** 30  
**Tip thickness** 3 mm  
**Compatibility** 00413.00



pcs: 1

50 D x  
 80 D x  
 80 x  
 120 x  
 160 x  
 200 x  
 + TOUCH 200 x  
 + FLASH 120 x  
 + FLASH 160 HF x  
 + FLASH 200 x  
 + 300 HP x  
 + 400 HP x  
 + SURTRON EVAC x  
 + SURTRON ABC x  
 + TOUCH HP 50D x  
 + TOUCH HP 80D x  
 + TOUCH HP 80 x  
 + TOUCH HP 120 x  
 + TOUCH HP 160 x  
 + TOUCH HP 200 x  
 + TOUCH HP 300 x  
 + TOUCH HP 400 x  
 + TOUCH HP EVAC x

110-750NS



27 cm



Tip Shape



**Description** Bipolar Forceps Artery Sealer  
**Size** 25,5 cm (10 in)  
**Sterilization** Autoclavable  
**Sterilization cycles** 30  
**Tip thickness** 3mm  
**Compatibility** 00413.00



pcs: 1

50 D x  
 80 D x  
 80 x  
 120 x  
 160 x  
 200 x  
 + TOUCH 200 x  
 + FLASH 120 x  
 + FLASH 160 HF x  
 + FLASH 200 x  
 + 300 HP x  
 + 400 HP x  
 + SURTRON EVAC x  
 + SURTRON ABC x  
 + TOUCH HP 50D x  
 + TOUCH HP 80D x  
 + TOUCH HP 80 x  
 + TOUCH HP 120 x  
 + TOUCH HP 160 x  
 + TOUCH HP 200 x  
 + TOUCH HP 300 x  
 + TOUCH HP 400 x  
 + TOUCH HP EVAC x

110-755NS



25,5 cm



Tip Shape



**Description** Bipolar Forceps Artery Sealer  
**Size** 17 cm (6,7in)  
**Sterilization** Autoclavable  
**Sterilization cycles** 30  
**Tip thickness** 2 mm  
**Compatibility** 00413.00



pcs: 1

50 D x  
 80 D x  
 80 x  
 120 x  
 160 x  
 200 x  
 + TOUCH 200 x  
 + FLASH 120 x  
 + FLASH 160 HF x  
 + FLASH 200 x  
 + 300 HP x  
 + 400 HP x  
 + SURTRON EVAC x  
 + SURTRON ABC x  
 + TOUCH HP 50D x  
 + TOUCH HP 80D x  
 + TOUCH HP 80 x  
 + TOUCH HP 120 x  
 + TOUCH HP 160 x  
 + TOUCH HP 200 x  
 + TOUCH HP 300 x  
 + TOUCH HP 400 x  
 + TOUCH HP EVAC x

110-760NS



17 cm



Tip Shape



310-110-05



11,5 cm



Tip Shape



**Description** Bipolar Forceps 11,5cm  
**Weight** 0,03 kg (0,6lb)  
**Length** 11,5 cm (4,52 in)  
**Tip thickness** 0,5 mm (0,019in)  
**Sterilization** Autoclavable  
**Sterilization cycles** 30  
**Compatibility** 00411.00, 00412.00



pcs: 1

50 D x  
80 D x  
80 +  
120 +  
160 +  
200 +  
TOUCH 200 +  
FLASH 120 +  
FLASH 160 HF +  
FLASH 200 +  
300 HP +  
400 HP +  
SURTRON EVAC x  
SURTRON ABC x  
TOUCH HP 50D x  
TOUCH HP 80D x  
TOUCH HP 80 +  
TOUCH HP 120 +  
TOUCH HP 160 +  
TOUCH HP 200 +  
TOUCH HP 300 +  
TOUCH HP 400 +  
TOUCH HP EVAC x

310-112-05



11,5 mm



Tip Shape



**Description** Curved Bipolar Forceps  
**Weight** 0,03 kg (0,6lb)  
**Length** 11,5 cm (4,52 in)  
**Tip thickness** 0,5 mm (0,019in)  
**Sterilization** Autoclavable  
**Sterilization cycles** 30  
**Compatibility** 00411.00, 00412.00



pcs: 1

50 D x  
80 D x  
80 +  
120 +  
160 +  
200 +  
TOUCH 200 +  
FLASH 120 +  
FLASH 160 HF +  
FLASH 200 +  
300 HP +  
400 HP +  
SURTRON EVAC x  
SURTRON ABC x  
TOUCH HP 50D x  
TOUCH HP 80D x  
TOUCH HP 80 +  
TOUCH HP 120 +  
TOUCH HP 160 +  
TOUCH HP 200 +  
TOUCH HP 300 +  
TOUCH HP 400 +  
TOUCH HP EVAC x

310-140-10



20 cm



Tip Shape



**Description** Bipolar Forceps  
**Weight** 0,03 kg (0,6lb)  
**Length** 20 cm (7,87in)  
**Tip thickness** 1 mm (0,039in)  
**Sterilization** Autoclavable  
**Sterilization cycles** 30  
**Compatibility** 00411.00, 00412.00



pcs: 1

50 D x  
80 D x  
80 +  
120 +  
160 +  
200 +  
TOUCH 200 +  
FLASH 120 +  
FLASH 160 HF +  
FLASH 200 +  
300 HP +  
400 HP +  
SURTRON EVAC x  
SURTRON ABC x  
TOUCH HP 50D x  
TOUCH HP 80D x  
TOUCH HP 80 +  
TOUCH HP 120 +  
TOUCH HP 160 +  
TOUCH HP 200 +  
TOUCH HP 300 +  
TOUCH HP 400 +  
TOUCH HP EVAC x

310-140-20



20 cm



Tip Shape



**Description** Bipolar Forceps  
**Weight** 0,03 kg (0,6lb)  
**Length** 20 cm (7,87 in)  
**Tip thickness** 2 mm (0,078 in)  
**Sterilization** Autoclavable  
**Sterilization cycles** 30  
**Compatibility** 00411.00, 00412.00



pcs: 1

50 D x  
80 D x  
80 +  
120 +  
160 +  
200 +  
TOUCH 200 +  
FLASH 120 +  
FLASH 160 HF +  
FLASH 200 +  
300 HP +  
400 HP +  
SURTRON EVAC x  
SURTRON ABC x  
TOUCH HP 50D x  
TOUCH HP 80D x  
TOUCH HP 80 +  
TOUCH HP 120 +  
TOUCH HP 160 +  
TOUCH HP 200 +  
TOUCH HP 300 +  
TOUCH HP 400 +  
TOUCH HP EVAC x

**Description** Curved Bipolar Forceps  
**Weight** 0,03Kg (0,6lb)  
**Length** 20 cm (7,87 in)  
**Tip thickness** 1 mm (0,039 in)  
**Sterilization** Autoclavable  
**Sterilization cycles** 30  
**Compatibility** 00411.00, 00412.00



pcs: 1

x 50 D  
x 80 D  
+ 80  
+ 120  
+ 160  
+ 200  
+ TOUCH 200  
+ FLASH 120  
+ FLASH 160 HF  
+ FLASH 200  
+ 300 HP  
+ 400 HP  
x SURTRON EVAC  
x SURTRON ABC  
x TOUCH HP 50D  
x TOUCH HP 80D  
+ TOUCH HP 80  
+ TOUCH HP 120  
+ TOUCH HP 160  
+ TOUCH HP 200  
+ TOUCH HP 300  
+ TOUCH HP 400  
x TOUCH HP EVAC



20 cm



**Description** Curved Bipolar Forceps  
**Weight** 0,03 Kg (0,6 lb)  
**Length** 20 cm (7,87 in)  
**Tip thickness** 2 mm (0,078 in)  
**Sterilization** Autoclavable  
**Sterilization cycles** 30  
**Compatibility** 00411.00, 00412.00



pcs: 1

x 50 D  
x 80 D  
+ 80  
+ 120  
+ 160  
+ 200  
+ TOUCH 200  
+ FLASH 120  
+ FLASH 160 HF  
+ FLASH 200  
+ 300 HP  
+ 400 HP  
x SURTRON EVAC  
x SURTRON ABC  
x TOUCH HP 50D  
x TOUCH HP 80D  
+ TOUCH HP 80  
+ TOUCH HP 120  
+ TOUCH HP 160  
+ TOUCH HP 200  
+ TOUCH HP 300  
+ TOUCH HP 400  
x TOUCH HP EVAC



20 cm



**Description** Angled Bipolar Forceps  
**Weight** 0,03 kg (0,6 lb)  
**Length** 20 cm (7,87in)  
**Tip thickness** 1 mm (0,11 in)  
**Sterilization** Autoclavable  
**Sterilization cycles** 30  
**Compatibility** 00411.00, 00412.00



pcs: 1

x 50 D  
x 80 D  
+ 80  
+ 120  
+ 160  
+ 200  
+ TOUCH 200  
+ FLASH 120  
+ FLASH 160 HF  
+ FLASH 200  
+ 300 HP  
+ 400 HP  
x SURTRON EVAC  
x SURTRON ABC  
x TOUCH HP 50D  
x TOUCH HP 80D  
+ TOUCH HP 80  
+ TOUCH HP 120  
+ TOUCH HP 160  
+ TOUCH HP 200  
+ TOUCH HP 300  
+ TOUCH HP 400  
x TOUCH HP EVAC



20 cm



**Description** Angled Bipolar Forceps  
**Weight** 0,03 kg (0,6 lb)  
**Length** 20 cm (0,07 in)  
**Tip thickness** 2 mm (0,07 in)  
**Sterilization** Autoclavable  
**Sterilization cycles** 30  
**Compatibility** 00411.00, 00412.00



pcs: 1

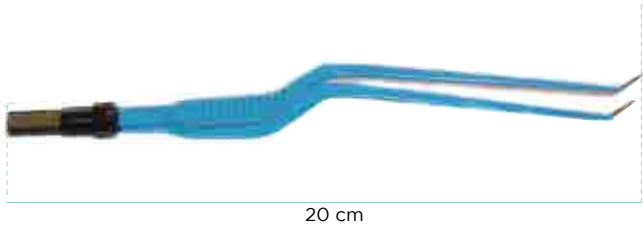
x 50 D  
x 80 D  
+ 80  
+ 120  
+ 160  
+ 200  
+ TOUCH 200  
+ FLASH 120  
+ FLASH 160 HF  
+ FLASH 200  
+ 300 HP  
+ 400 HP  
x SURTRON EVAC  
x SURTRON ABC  
x TOUCH HP 50D  
x TOUCH HP 80D  
+ TOUCH HP 80  
+ TOUCH HP 120  
+ TOUCH HP 160  
+ TOUCH HP 200  
+ TOUCH HP 300  
+ TOUCH HP 400  
x TOUCH HP EVAC



20 cm



310-182-10



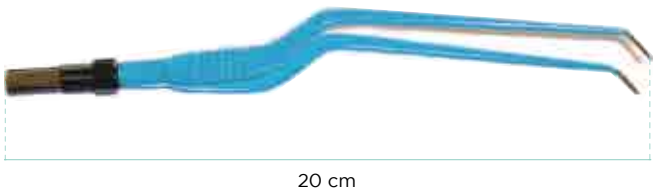
**Description** Angled Curved Bipolar Forceps  
**Weight** 0,03 kg (0,6 lb)  
**Length** 20 cm (7,87 lb)  
**Tip thickness** 1 mm (0,039 in)  
**Sterilization** Autoclavable  
**Sterilisation cycles** 30  
**Compatibility** 00411.00, 00412.00



pcs: 1

50 D	+	TOUCH 200	+	FLASH 120	+	FLASH 160 HF	+	FLASH 200	+	300 HP	+	400 HP	+	SURTRON EVAC	+	SURTRON ABC	+	TOUCH HP 50D	+	TOUCH HP 80D	+	TOUCH HP 80	+	TOUCH HP 120	+	TOUCH HP 160	+	TOUCH HP 200	+	TOUCH HP 300	+	TOUCH HP 400	+	TOUCH HP EVAC
x	x	x	+	+	+	+	+	+	+	+	+	+	+	x	x	x	x	x	x	x	x	x	x	x	x	x	x	x	x	x	x	x	x	

310-185-10



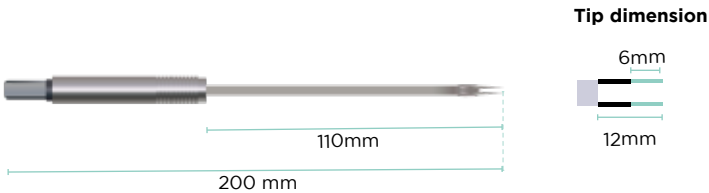
**Description** Angled Curved Bipolar Forceps  
**Weight** 0,03 kg (0,6lb)  
**Length** 20 cm (7,87 lb)  
**Tip thickness** 1 mm (0,039in)  
**Sterilization** Autoclavable  
**Sterilization cycles** 30  
**Compatibility** 00411.00, 00412.00



pcs: 1

50 D	+	TOUCH 200	+	FLASH 120	+	FLASH 160 HF	+	FLASH 200	+	300 HP	+	400 HP	+	SURTRON EVAC	+	SURTRON ABC	+	TOUCH HP 50D	+	TOUCH HP 80D	+	TOUCH HP 80	+	TOUCH HP 120	+	TOUCH HP 160	+	TOUCH HP 200	+	TOUCH HP 300	+	TOUCH HP 400	+	TOUCH HP EVAC
x	x	x	+	+	+	+	+	+	+	+	+	+	+	x	x	x	x	x	x	x	x	x	x	x	x	x	x	x	x	x	x	x		

310-510



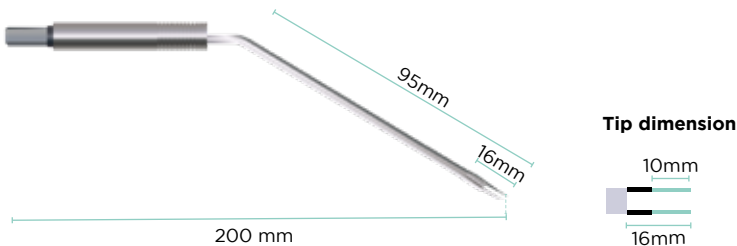
**Description** Bipolar Electrode  
**Weight** 0,03 kg (0,6 lb)  
**Length** 20 cm (7,87 lb)  
**Tip thickness** 0,7 mm (0,0275 in)  
**Sterilization** Autoclavable  
**Sterilization cycles** 30  
**Compatibility** 00411.00, 00412.00



pcs: 1

50 D	+	TOUCH 200	+	FLASH 120	+	FLASH 160 HF	+	FLASH 200	+	300 HP	+	400 HP	+	SURTRON EVAC	+	SURTRON ABC	+	TOUCH HP 50D	+	TOUCH HP 80D	+	TOUCH HP 80	+	TOUCH HP 120	+	TOUCH HP 160	+	TOUCH HP 200	+	TOUCH HP 300	+	TOUCH HP 400	+	TOUCH HP EVAC
x	x	x	+	+	+	+	+	+	+	+	+	+	+	x	x	x	x	x	x	x	x	x	x	x	x	x	x	x	x	x	x	x		

310-550



**Description** Bipolar Electrode  
**Weight** 0,03 kg (0,06lb)  
**Length** 20 cm (7,87lb)  
**Tip thickness** 0,7 mm (0,0275 in)  
**Sterilization** Autoclavable  
**Sterilization cycles** 30  
**Compatibility** 00411.00, 00412.00



pcs: 1

50 D	+	TOUCH 200	+	FLASH 120	+	FLASH 160 HF	+	FLASH 200	+	300 HP	+	400 HP	+	SURTRON EVAC	+	SURTRON ABC	+	TOUCH HP 50D	+	TOUCH HP 80D	+	TOUCH HP 80	+	TOUCH HP 120	+	TOUCH HP 160	+	TOUCH HP 200	+	TOUCH HP 300	+	TOUCH HP 400	+	TOUCH HP EVAC
x	x	x	+	+	+	+	+	+	+	+	+	+	+	x	x	x	x	x	x	x	x	x	x	x	x	x	x	x	x	x	x	x		

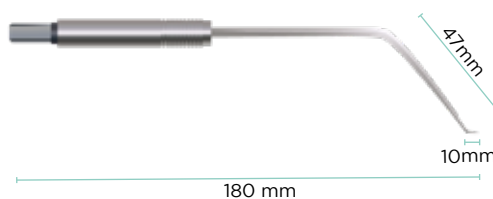
**Description** Bipolar Scissors 20 cm - curved 2  
**Weight** 0,03 Kg (0,6 lb)  
**Length** 18 cm (7 lb)  
**Tip thickness** 0,7 mm (0,0275 in)  
**Sterilization** Autoclavable  
**Sterilisation cycles** 30  
**Compatibility** 00411.00, 00412.00



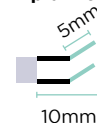
pcs: 1

x 50 D  
x 80 D  
x 80  
+ 120  
+ 160  
+ 200  
+ TOUCH 200  
+ FLASH 120  
+ FLASH 160 HF  
+ FLASH 200  
+ 300 HP  
+ 400 HP  
x SURTRON EVAC  
x SURTRON ABC  
x TOUCH HP 50D  
x TOUCH HP 80D  
+ TOUCH HP 80  
+ TOUCH HP 120  
+ TOUCH HP 160  
+ TOUCH HP 200  
+ TOUCH HP 300  
+ TOUCH HP 400  
x TOUCH HP EVAC

310-590



Tip dimension



Tip Shape



**Description** Bipolar Clamp Scissors  
**Weight** 0,05 kg (0,1 lb)  
**Length** 15 cm (5,9 lb)  
**Tip thickness** 0,5 mm (0,02 in)  
**Sterilization** Autoclavable  
**Sterilization cycles** 30  
**Compatibility** 00418.00



pcs: 1

x 50 D  
x 80 D  
x 80  
x 120  
x 160  
x 200  
+ TOUCH 200  
+ FLASH 120  
+ FLASH 160 HF  
+ FLASH 200  
+ 300 HP  
+ 400 HP  
x SURTRON EVAC  
x SURTRON ABC  
x TOUCH HP 50D  
x TOUCH HP 80D  
x TOUCH HP 80  
x TOUCH HP 120  
x TOUCH HP 160  
+ TOUCH HP 200  
+ TOUCH HP 300  
+ TOUCH HP 400  
x TOUCH HP EVAC



15 cm

Tip Shape



**Description** Bipolar Clamp Scissors  
**Weight** 0,05 kg (0,1 lb)  
**Length** 19 cm (7,5 lb)  
**Tip thickness** 0,5 mm (0,02 in)  
**Sterilization** Autoclavable  
**Sterilization cycles** 30  
**Compatibility** 00418.00



pcs: 1

x 50 D  
x 80 D  
x 80  
x 120  
x 160  
x 200  
+ TOUCH 200  
+ FLASH 120  
+ FLASH 160 HF  
+ FLASH 200  
+ 300 HP  
+ 400 HP  
x SURTRON EVAC  
x SURTRON ABC  
x TOUCH HP 50D  
x TOUCH HP 80D  
x TOUCH HP 80  
x TOUCH HP 120  
x TOUCH HP 160  
+ TOUCH HP 200  
+ TOUCH HP 300  
+ TOUCH HP 400  
x TOUCH HP EVAC



19 cm

Tip Shape



**Description** Bipolar Scissors  
**Weight** 0,05 kg (0,11 lb)  
**Length** 18 cm (7,0 lb)  
**Tip thickness** 2 mm (0,078 in)  
**Sterilization** Autoclavable  
**Sterilization cycles** 30  
**Compatibility** 00418.00



pcs: 1

x 50 D  
x 80 D  
x 80  
x 120  
x 160  
x 200  
+ TOUCH 200  
+ FLASH 120  
+ FLASH 160 HF  
+ FLASH 200  
+ 300 HP  
+ 400 HP  
x SURTRON EVAC  
x SURTRON ABC  
x TOUCH HP 50D  
x TOUCH HP 80D  
x TOUCH HP 80  
x TOUCH HP 120  
x TOUCH HP 160  
+ TOUCH HP 200  
+ TOUCH HP 300  
+ TOUCH HP 400  
x TOUCH HP EVAC

410-200-18

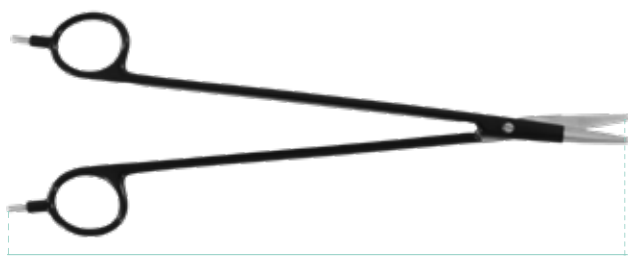


18 cm

Tip Shape



410-200-21



21 cm



Tip Shape

**Description** Bipolar Scissors  
**Weight** 0,05 kg (0,11 lb)  
**Length** 21 cm (7,0 lb)  
**Tip thickness** 2 mm (0,078 in)  
**Sterilization** Autoclavable  
**Sterilisation cycles** 30  
**Compatibility** 00418.00



pcs: 1

50 D x  
80 D x  
80 x  
120 x  
160 x  
200 x  
TOUCH 200 +  
FLASH 120 x  
FLASH 160 HF x  
FLASH 200 x  
300 HP +  
400 HP +  
SURTRON EVAC x  
SURTRON ABC x  
TOUCH HP 50D x  
TOUCH HP 80D x  
TOUCH HP 80 x  
TOUCH HP 120 x  
TOUCH HP 160 x  
TOUCH HP 200 +  
TOUCH HP 300 +  
TOUCH HP 400 +  
TOUCH HP EVAC x

410-200-23



23 cm



Tip Shape

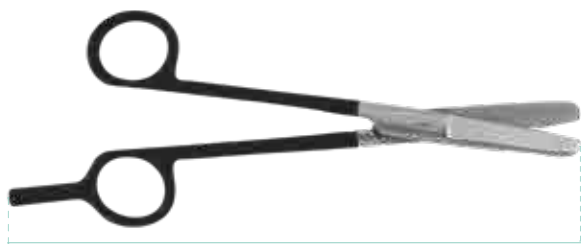
**Description** Bipolar Scissors  
**Weight** 0,05 kg (0,11 lb)  
**Length** 23 cm (7,0 lb)  
**Tip thickness** 2 mm (0,078 in)  
**Sterilization** Autoclavable  
**Sterilisation cycles** 30  
**Compatibility** 00418.00



pcs: 1

50 D x  
80 D x  
80 x  
120 x  
160 x  
200 x  
TOUCH 200 +  
FLASH 120 x  
FLASH 160 HF x  
FLASH 200 x  
300 HP +  
400 HP +  
SURTRON EVAC x  
SURTRON ABC x  
TOUCH HP 50D x  
TOUCH HP 80D x  
TOUCH HP 80 x  
TOUCH HP 120 x  
TOUCH HP 160 x  
TOUCH HP 200 +  
TOUCH HP 300 +  
TOUCH HP 400 +  
TOUCH HP EVAC x

330-160



18 cm



Tip Shape

**Description** Monopolar Scissors 21cm  
**Weight** 0,05Kg (0,11lb)  
**Length** 18 cm (7,0 lb)  
**Cutter length** 45 mm (1,7 in)  
**Sterilization** Autoclavable  
**Sterilisation cycles** 30  
**Compatibility** 00402.02



pcs: 1

50 D x  
80 D x  
80 +  
120 +  
160 +  
200 +  
TOUCH 200 +  
FLASH 120 +  
FLASH 160 HF +  
FLASH 200 +  
300 HP +  
400 HP +  
SURTRON EVAC x  
SURTRON ABC x  
TOUCH HP 50D x  
TOUCH HP 80D x  
TOUCH HP 80 +  
TOUCH HP 120 +  
TOUCH HP 160 +  
TOUCH HP 200 +  
TOUCH HP 300 +  
TOUCH HP 400 +  
TOUCH HP EVAC x

330-134-20



21 cm



Tip Shape

**Description** Monopolar Surgical Forceps  
**Weight** 0,05 kg (0,11 lb)  
**Length** 21 cm (8,2 lb)  
**Tip thickness** 2 mm (0,078 in)  
**Sterilization** Autoclavable  
**Sterilisation cycles** 30  
**Compatibility** 00402.02



pcs: 1

50 D +  
80 D +  
80 +  
120 +  
160 +  
200 +  
TOUCH 200 +  
FLASH 120 +  
FLASH 160 HF +  
FLASH 200 +  
300 HP +  
400 HP +  
SURTRON EVAC x  
SURTRON ABC x  
TOUCH HP 50D +  
TOUCH HP 80D +  
TOUCH HP 80 +  
TOUCH HP 120 +  
TOUCH HP 160 +  
TOUCH HP 200 +  
TOUCH HP 300 +  
TOUCH HP 400 +  
TOUCH HP EVAC x





# EVA CUA TION KIT



00900.01/12



**Description** Handle evacuation kit for surgical smoke evacuato  
**Pipe Diameter** ø22 cm (3,93 in)  
**Pipe Lenght** 150 cm (7,2 in)  
**Weight** 0,05 kg (0,11 lb)  
**Sterilization** NO



pcs: 12

50 D x  
80 D x  
80 x  
120 x  
160 x  
200 x  
TOUCH 200 x  
FLASH 120 x  
FLASH 160 HF x  
FLASH 200 x  
300 HP x  
400 HP x  
+ SURTRON EVAC  
SURTRON ABC x  
TOUCH HP 50D x  
TOUCH HP 80D x  
TOUCH HP 80 x  
TOUCH HP 120 x  
TOUCH HP 160 x  
TOUCH HP 200 x  
TOUCH HP 300 x  
TOUCH HP 400 x  
+ TOUCH HP EVAC

00900.02/06



**Description** Evacuation kit for surgical smoke evacuator  
**Pipe Diameter** ø22 cm (0,86 in)  
**Pipe Lenght** 240 cm (94,48 in)  
**Weight** 0,05 kg (0,11 lb)  
**Sterilization** NO  
**Compatibility** 00900.01/12, 00900.05, 00900.07, 00900.08/12,



pcs: 6

50 D x  
80 D x  
80 x  
120 x  
160 x  
200 x  
TOUCH 200 x  
FLASH 120 x  
FLASH 160 HF x  
FLASH 200 x  
300 HP x  
400 HP x  
+ SURTRON EVAC  
SURTRON ABC x  
TOUCH HP 50D x  
TOUCH HP 80D x  
TOUCH HP 80 x  
TOUCH HP 120 x  
TOUCH HP 160 x  
TOUCH HP 200 x  
TOUCH HP 300 x  
TOUCH HP 400 x  
+ TOUCH HP EVAC

00900.04



**Description** Autoclavable evacuation tube D.22  
**Pipe Diameter** ø7 mm (0,27 in)  
**Pipe Lenght** 240 cm (94,5 in)  
**Weight** 0,05 kg (0,11 lb)  
**Sterilization** Autoclavable  
**Sterilization cycles** 100  
**Compatibility** 00900.01/12, 00900.05, 00900.06/06, 00900.07, 00900.08/12



pcs: 1

50 D x  
80 D x  
80 x  
120 x  
160 x  
200 x  
TOUCH 200 x  
FLASH 120 x  
FLASH 160 HF x  
FLASH 200 x  
300 HP x  
400 HP x  
+ SURTRON EVAC  
SURTRON ABC x  
TOUCH HP 50D x  
TOUCH HP 80D x  
TOUCH HP 80 x  
TOUCH HP 120 x  
TOUCH HP 160 x  
TOUCH HP 200 x  
TOUCH HP 300 x  
TOUCH HP 400 x  
+ TOUCH HP EVAC



**Description** Autoclavable evacuation tube D.22  
**Pipe Diameter** ø7 mm (0,27 in)  
**Pipe Length** 150 cm (59,05 in)  
**Weight** 0,05 kg (0,11lb)  
**Sterilization** Autoclavable  
**Sterilization cycles** 100  
**Compatibility** 00900.02, 00900.04



50 D	x	TOUCH 200	x	SURTRON EVAC	+
80 D	x	FLASH 120	x	SURTRON ABC	x
80	x	FLASH 160 HF	x	TOUCH HP 50D	x
120	x	FLASH 200	x	TOUCH HP 80D	x
160	x	300 HP	x	TOUCH HP 80	x
200	x	400 HP	x	TOUCH HP 120	x
	x		x	TOUCH HP 160	x
	x		x	TOUCH HP 200	x
	x		x	TOUCH HP 300	x
	x		x	TOUCH HP 400	x
	x		x	TOUCH HP EVAC	+

00900.05



**Description** Bacterial/Viral Filter D.22  
**Pipe Diameter** ø22 mm (0,867 in)  
**Connection Diameter** ø15 mm (0,59 in)  
**Sterilization** NO  
**Compatibility** 00900.04, 00900.02/06, 00900.FU01/10



50 D	x	TOUCH 200	x	SURTRON EVAC	+
80 D	x	FLASH 120	x	SURTRON ABC	x
80	x	FLASH 160 HF	x	TOUCH HP 50D	x
120	x	FLASH 200	x	TOUCH HP 80D	x
160	x	300 HP	x	TOUCH HP 80	x
200	x	400 HP	x	TOUCH HP 120	x
	x		x	TOUCH HP 160	x
	x		x	TOUCH HP 200	x
	x		x	TOUCH HP 300	x
	x		x	TOUCH HP 400	x
	x		x	TOUCH HP EVAC	+

00900.06/06



**Description** Autoclavable handle evacuation kit  
**Pipe Diameter** ø22 cm (0,86 in)  
**Pipe Length** 150 cm (59 in)  
**Weight** 0,05 kg (0,11 lb)  
**Sterilization** Autoclavable  
**Sterilization cycles** 100  
**Compatibility** 755VL, 00205.00/40, 00206.00/40, 00900.02/06, 00900.04



50 D	x	TOUCH 200	x	SURTRON EVAC	+
80 D	x	FLASH 120	x	SURTRON ABC	x
80	x	FLASH 160 HF	x	TOUCH HP 50D	x
120	x	FLASH 200	x	TOUCH HP 80D	x
160	x	300 HP	x	TOUCH HP 80	x
200	x	400 HP	x	TOUCH HP 120	x
	x		x	TOUCH HP 160	x
	x		x	TOUCH HP 200	x
	x		x	TOUCH HP 300	x
	x		x	TOUCH HP 400	x
	x		x	TOUCH HP EVAC	+

00900.07



00900.08/12



**Description**  
**Pipe Diameter**  
**Pipe Length**  
**Weight**  
**Sterilization**  
**Compatibility**

Evacuation kit for TROCAR Luer Lock  
 ø22 mm (0,86 in)  
 240 cm (94,48 in)  
 0,05 kg (0,11 lb)  
 NO  
 00900.02, 00900.04



pcs: 12

00900.FU01/10\*



### Description

ULPA Filter for SURTRON EVAC - red

### Filter Diameter

22 mm 7/8" (0,867 in)

### Particles diameter

0,12 micron

### Filter Type

ULPA with active carbon

### Filter efficiency

99,999X %

### Filter duration

00900.FST/10: 5 hours

### Filter duration

00900.FU01/10: 20 hours



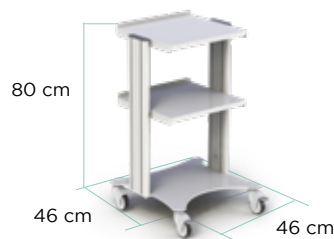
pcs: 1





TROLLEY

## TR003

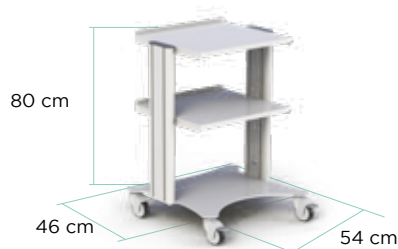


<b>Description</b>	Trolley 3 shelvees
<b>Size WxHxD</b>	80x46x46 cm (31x18,1x18,1 in)
<b>Weight</b>	18 kg (34,47 lb)
<b>Shelf size</b>	40x36 cm (15,74x14,17 in)
<b>Color</b>	RAL7035 (Light Grey)
<b>Frame Material</b>	Trolley made of aluminum with adjustable shelves made with steel, covered with a coat of paint.
<b>Wheel type</b>	80 mm wheels diameter, anterior wheels whit block system.

+ 50 D  
+ 80 D  
+ 80  
+ 120  
+ 160  
+ 200  
+ TOUCH 200  
+ FLASH 120  
+ FLASH 160 HF  
+ FLASH 200  
x 300 HP  
x 400 HP  
+ SURTRON EVAC  
+ SURTRON ABC  
+ TOUCH HP 50D  
+ TOUCH HP 80D  
+ TOUCH HP 80  
+ TOUCH HP 120  
+ TOUCH HP 160  
+ TOUCH HP 200  
+ TOUCH HP 300  
+ TOUCH HP 400  
x TOUCH HP EVAC



## TR003W



<b>Description</b>	Trolley 3 shelvees
<b>Size WxHxD</b>	80x54x46 cm (31x21,2x18,1 in)
<b>Weight</b>	18,5 kg (34,47 lb)
<b>Shelf size</b>	47x36 cm (18,50x14,17 in)
<b>Color</b>	RAL7035 (Light Grey)
<b>Frame Material</b>	Trolley made of aluminum with adjustable shelves made with steel, covered with a coat of paint.
<b>Wheel type</b>	80 mm wheels diameter, anterior wheels, whit block system.

+ 50 D  
+ 80 D  
+ 80  
+ 120  
+ 160  
+ 200  
+ TOUCH 200  
+ FLASH 120  
+ FLASH 160 HF  
+ FLASH 200  
+ 300 HP  
+ 400 HP  
+ SURTRON EVAC  
+ SURTRON ABC  
+ TOUCH HP 50D  
+ TOUCH HP 80D  
+ TOUCH HP 80  
+ TOUCH HP 120  
+ TOUCH HP 160  
+ TOUCH HP 200  
+ TOUCH HP 300  
+ TOUCH HP 400  
x TOUCH HP EVAC



## TR004



<b>Description</b>	Trolley 4 shelvees
<b>Size WxHxD</b>	90x46x46 cm (35,43x18,1x18,1 in)
<b>Weight</b>	20 kg (39,6 lb)
<b>Shelf size</b>	40x36 cm (15,74x14,17 in)
<b>Color</b>	RAL7035 (Light Grey)
<b>Frame Material</b>	Trolley made of aluminum with adjustable shelves made with steel, covered with a coat of paint.
<b>Wheel type</b>	80 mm wheels diameter, anterior wheels whit block system.

+ 50 D  
+ 80 D  
+ 80  
+ 120  
+ 160  
+ 200  
+ TOUCH 200  
+ FLASH 120  
+ FLASH 160 HF  
+ FLASH 200  
x 300 HP  
x 400 HP  
+ SURTRON EVAC  
+ SURTRON ABC  
+ TOUCH HP 50D  
+ TOUCH HP 80D  
+ TOUCH HP 80  
+ TOUCH HP 120  
+ TOUCH HP 160  
+ TOUCH HP 200  
+ TOUCH HP 300  
+ TOUCH HP 400  
x TOUCH HP EVAC



Description

Size WxHxD

Weight

Shelf size

Color

Frame Material

Wheel type

Trolley 5 shelvees  
112x46x46 cm (44x18,1x18,1 in)  
19 kg (41,9 lb)  
40x36 cm (15,74x14,17 in)  
RAL7035 (Light Grey)  
Trolley made of aluminum with adjustable shelves made with steel, covered with a coat of paint.  
80 mm wheels diameter, anterior wheels whit block system.

- + 50 D
- + 80 D
- + 80
- + 120
- + 160
- + 200
- + TOUCH 200
- + FLASH 120
- + FLASH 160 HF
- + FLASH 200
- + 300 HP
- + 400 HP
- + SURTRON EVAC
- + SURTRON ABC
- + TOUCH HP 50D
- + TOUCH HP 80D
- + TOUCH HP 80
- + TOUCH HP 120
- + TOUCH HP 160
- + TOUCH HP 200
- + TOUCH HP 300
- + TOUCH HP 400
- + TOUCH HP EVAC



pcs: 1

Description

Size WxHxD

Weight

Shelf size

Color

Frame Material

Wheel type

Trolley 5 shelvees  
112x46x54 cm (44x18,1x21,2 in)  
24,5 kg (54 lb)  
47x36 cm (18,50x14,17 in)  
RAL7035 (Light Grey)  
Trolley made of aluminum with adjustable shelves made with steel, covered with a coat of paint.  
80 mm wheels diameter, anterior wheels whit block system.

- + 50 D
- + 80 D
- + 80
- + 120
- + 160
- + 200
- + TOUCH 200
- + FLASH 120
- + FLASH 160 HF
- + FLASH 200
- + 300 HP
- + 400 HP
- + SURTRON EVAC
- + SURTRON ABC
- + TOUCH HP 50D
- + TOUCH HP 80D
- + TOUCH HP 80
- + TOUCH HP 120
- + TOUCH HP 160
- + TOUCH HP 200
- + TOUCH HP 300
- + TOUCH HP 400
- + TOUCH HP EVAC



pcs: 1

Description

Size WxHxD

Weight

Color

Frame Material

Support for Cylinder  
18x6x20 cm (7x2,3x7,87 in)  
0,5 kg (1,1 lb)  
RAL7016 (Anthracite Gray)  
Shelves made with steel, covered with a coat of paint.

- + 50 D
- + 80 D
- + 80
- + 120
- + 160
- + 200
- + TOUCH 200
- + FLASH 120
- + FLASH 160 HF
- + FLASH 200
- + 300 HP
- + 400 HP
- + SURTRON EVAC
- + SURTRON ABC
- + TOUCH HP 50D
- + TOUCH HP 80D
- + TOUCH HP 80
- + TOUCH HP 120
- + TOUCH HP 160
- + TOUCH HP 200
- + TOUCH HP 300
- + TOUCH HP 400
- + TOUCH HP EVAC



pcs: 1

TR005



TR005W



TRCYLSUP01





TRDRAWER01



**Description** Drawer for trolley type TR  
**Size WxHxD** 38,5x10x28,7 cm (15x3,9x11,3 in)

- + 50 D
- + 80 D
- + 80
- + 120
- + 160
- + 200
- + TOUCH 200
- + FLASH 120
- + FLASH 160 HF
- + FLASH 200
- + 300 HP
- + 400 HP
- + SURTRON EVAC
- + SURTRON ABC
- + TOUCH HP 50D
- + TOUCH HP 80D
- + TOUCH HP 80
- + TOUCH HP 120
- + TOUCH HP 160
- + TOUCH HP 200
- + TOUCH HP 300
- + TOUCH HP 400
- + TOUCH HP EVAC



TRDRAWER01W

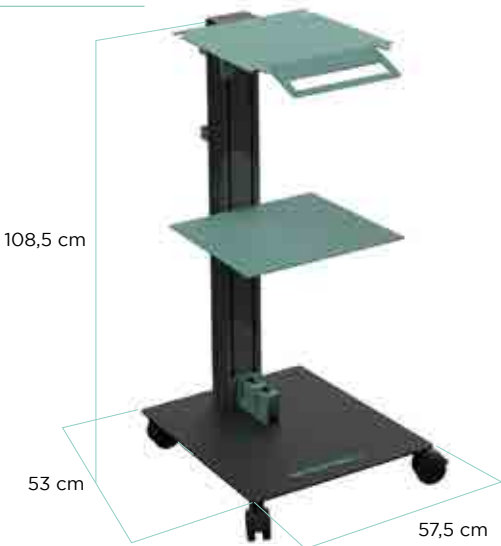


**Description** Drawer for trolley type TR W  
**Size WxHxD** 38,5x10x28,7 cm (15x3,9x11,3 in)

- + 50 D
- + 80 D
- + 80
- + 120
- + 160
- + 200
- + TOUCH 200
- + FLASH 120
- + FLASH 160 HF
- + FLASH 200
- + 300 HP
- + 400 HP
- + SURTRON EVAC
- + SURTRON ABC
- + TOUCH HP 50D
- + TOUCH HP 80D
- + TOUCH HP 80
- + TOUCH HP 120
- + TOUCH HP 160
- + TOUCH HP 200
- + TOUCH HP 300
- + TOUCH HP 400
- + TOUCH HP EVAC



TRST001



**Description** SURTRON TOUCH HP 300/400 Trolley  
**Size WxHxD** 53x108,5x57,5 cm (20x42,7x22,6 in)  
**Weight** 33 Kg (72,75lb)  
**shelf size** 43,5x10x38 mm (17,x3,9x15 in)  
**Color** RAL7016 (Anthracite gray)  
RAL6027 (Light Green)  
RAL9005 (Intense Black)

**Frame Material** Trolley with column made of aluminum with adjustable shelves made with steel, covered with a coat of paint.

**Wheel type** 80 mm wheels diameter, anterior wheels whit block system.

- + 50 D
- + 80 D
- + 80
- + 120
- + 160
- + 200
- + TOUCH 200
- + FLASH 120
- + FLASH 160 HF
- + FLASH 200
- + 300 HP
- + 400 HP
- + SURTRON EVAC
- + SURTRON ABC
- + TOUCH HP 50D
- + TOUCH HP 80D
- + TOUCH HP 80
- + TOUCH HP 120
- + TOUCH HP 160
- + TOUCH HP 200
- + TOUCH HP 300
- + TOUCH HP 400
- + TOUCH HP EVAC





**Description** SURTRON TOUCH HP 200 Trolley  
**Size WxHxD** 53x108,5x57,5 cm (20x42,7x22,6 in)  
**Weight** 33 Kg (72,75lb)  
**shelf size** 43,5x10x38 mm (17,x3,9x15 in)  
**Color** RAL7016 (Anthracite gray)  
 RAL6027 (Light Green)  
 RAL9005 (Intense Black)

**Frame Material** Trolley with column made of aluminum with adjustable shelves made with steel, covered with a coat of paint.

**Wheel type** 80 mm wheels diameter, anterior wheels whit block system.

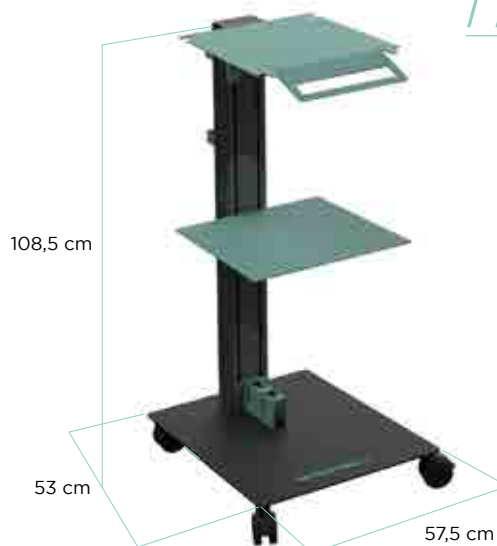
50 D x  
 80 D x  
 80 x  
 120 x  
 160 x  
 200 x  
 TOUCH 200 x  
 FLASH 120 x  
 FLASH 160 HF x  
 FLASH 200 x  
 300 HP x  
 400 HP x  
 SURTRON EVAC x  
 SURTRON ABC x  
 TOUCH HP 50D x  
 TOUCH HP 80D x  
 TOUCH HP 80 x  
 TOUCH HP 120 x  
 TOUCH HP 160 x  
 TOUCH HP 200 x  
 TOUCH HP 300 x  
 TOUCH HP 400 x  
 TOUCH HP EVAC x



pcs: 1

WxHxD: 100x60x18 cm Weight: 33 kg

TRST002



**Description** SURTRON TOUCH HP80/120/160 Trolley  
**Size WxHxD** 53x108,5x57,5 cm (20x42,7x22,6 in)  
**Weight** 33 Kg (72,75lb)  
**shelf size** 43,5x10x38 mm (17,x3,9x15 in)  
**Color** RAL7016 (Anthracite gray)  
 RAL6027 (Light Green)  
 RAL9005 (Intense Black)

**Frame Material** Trolley with column made of aluminum with adjustable shelves made with steel, covered with a coat of paint.

**Wheel type** 80 mm wheels diameter, anterior wheels whit block system.

50 D x  
 80 D x  
 80 x  
 120 x  
 160 x  
 200 x  
 TOUCH 200 x  
 FLASH 120 x  
 FLASH 160 HF x  
 FLASH 200 x  
 300 HP x  
 400 HP x  
 SURTRON EVAC x  
 SURTRON ABC x  
 TOUCH HP 50D x  
 TOUCH HP 80D x  
 TOUCH HP 80 x  
 TOUCH HP 120 x  
 TOUCH HP 160 x  
 TOUCH HP 200 x  
 TOUCH HP 300 x  
 TOUCH HP 400 x  
 TOUCH HP EVAC x



pcs: 1

WxHxD: 100x60x18 cm Weight: 33 kg

TRST003



**Description** Shelf for SURTRON TOUCH HP EVAC  
**Size WxHxD** 37x14x43 cm (14,5x5,5x16,9 in)  
**Weight** 5 kg (11 lb)  
**Color** RAL6027 (Light Green)  
**Frame Material** Baket made with steel, covered with a coat of paint.

50 D x  
 80 D x  
 80 x  
 120 x  
 160 x  
 200 x  
 TOUCH 200 x  
 FLASH 120 x  
 FLASH 160 HF x  
 FLASH 200 x  
 300 HP x  
 400 HP x  
 SURTRON EVAC x  
 SURTRON ABC x  
 TOUCH HP 50D x  
 TOUCH HP 80D x  
 TOUCH HP 80 x  
 TOUCH HP 120 x  
 TOUCH HP 160 x  
 TOUCH HP 200 x  
 TOUCH HP 300 x  
 TOUCH HP 400 x  
 TOUCH HP EVAC x



pcs: 1

7211A



6959A



Description	Shelf for SURTRON TOUCH HP 300 and TOUCH HP 400 Trolley
Size WxHxD	39x14x46 cm (15,35x5,5x18,1 in)
Weight	5,4 Kg (11,9 lb)
Color	RAL6027 (Light Green)

50 D	TOUCH 200	SURTRON EVAC
x	x	x
80 D	FLASH 120	SURTRON ABC
x	x	x
80	FLASH 160 HF	TOUCH HP 50D
x	x	x
120	FLASH 200	TOUCH HP 80D
x	x	x
160	300 HP	TOUCH HP 80
x	x	x
200	400 HP	TOUCH HP 120
x	x	x
TOUCH 200		TOUCH HP 160
x		x
FLASH 120		TOUCH HP 200
x		x
FLASH 160 HF		+ TOUCH HP 300
x		+ TOUCH HP 400
FLASH 200		x TOUCH HP EVAC
x		
300 HP		
x		
400 HP		
x		
SURTRON EVAC		
x		
SURTRON ABC		
x		
TOUCH HP 50D		
x		
TOUCH HP 80D		
x		
TOUCH HP 80		
x		
TOUCH HP 120		
x		
TOUCH HP 160		
x		
TOUCH HP 200		
x		
+ TOUCH HP 300		
x		
TOUCH HP 400		
x		
TOUCH HP EVAC		
x		



6992A



Description	Shelf for SURTRON TOUCH HP 200
Size WxHxD	34x14x38 cm (13,38x5,5x14,9 in)
Weight	4,4 Kg (9,7 lb)
Color	RAL6027 (Light Green)

50 D	TOUCH 200	SURTRON EVAC
x	x	x
80 D	FLASH 120	SURTRON ABC
x	x	x
80	FLASH 160 HF	TOUCH HP 50D
x	x	x
120	FLASH 200	TOUCH HP 80D
x	x	x
160	300 HP	TOUCH HP 80
x	x	x
200	400 HP	TOUCH HP 120
x	x	x
TOUCH 200		TOUCH HP 160
x		x
FLASH 120		TOUCH HP 200
x		x
FLASH 160 HF		+ TOUCH HP 300
x		x
FLASH 200		TOUCH HP 400
x		x
300 HP		TOUCH HP EVAC
x		x
400 HP		
x		
SURTRON EVAC		
x		
SURTRON ABC		
x		
TOUCH HP 50D		
x		
TOUCH HP 80D		
x		
TOUCH HP 80		
x		
TOUCH HP 120		
x		
TOUCH HP 160		
x		
TOUCH HP 200		
x		
+ TOUCH HP 300		
x		
TOUCH HP 400		
x		
TOUCH HP EVAC		
x		



7277A



Description	Shelf for SURTRON TOUCH HP 80/120/160 Trolley
Size WxHxD	25x14x27 cm (9,8x5,5x10,6 in)
Weight	3,4 Kg (6,6 lb)
Color	RAL6027 (Light Green)

50 D	TOUCH 200	SURTRON EVAC
x	x	x
80 D	FLASH 120	SURTRON ABC
x	x	x
80	FLASH 160 HF	TOUCH HP 50D
x	x	x
120	FLASH 200	TOUCH HP 80D
x	x	x
160	300 HP	TOUCH HP 80
x	x	x
200	400 HP	TOUCH HP 120
x	x	x
TOUCH 200		TOUCH HP 160
x		x
FLASH 120		TOUCH HP 200
x		x
FLASH 160 HF		+ TOUCH HP 300
x		x
FLASH 200		TOUCH HP 400
x		x
300 HP		TOUCH HP EVAC
x		x
400 HP		
x		
SURTRON EVAC		
x		
SURTRON ABC		
x		
TOUCH HP 50D		
x		
TOUCH HP 80D		
x		
TOUCH HP 80		
x		
TOUCH HP 120		
x		
TOUCH HP 160		
x		
TOUCH HP 200		
x		
+ TOUCH HP 300		
x		
TOUCH HP 400		
x		
TOUCH HP EVAC		
x		



**Description**  
**Size WxHxD**  
**Weight**  
**Color**  
**Frame Material**

Basket for ST Trolley  
43,5x10x38 mm (17,x3,9x15 in)  
3,2 kg (7 lb)  
RAL9005 (Intense Black)  
Baket made with steel,  
covered with a coat of paint.

TRSTB01

- x 50 D
- x 80 D
- x 80
- x 120
- x 160
- x 200
- x TOUCH 200
- x FLASH 120
- x FLASH 160 HF
- x FLASH 200
- x 300 HP
- x 400 HP
- x SURTRON EVAC
- x SURTRON ABC
- x TOUCH HP 50D
- x TOUCH HP 80D
- + TOUCH HP 80
- + TOUCH HP 120
- + TOUCH HP 160
- + TOUCH HP 200
- + TOUCH HP 300
- + TOUCH HP 400
- + TOUCH HP EVAC



pcs: 1



**Description**  
**Size WxHxD**  
**Weight**  
**Color**  
**Frame Material**

Support section for ST Trolley  
43,5x13,5x38 cm (17x5,3x15 in)  
5,75Kg (2,26lb)  
RAL6027 (Light Green)  
Holder made with steel, covered  
with a coat of paint.

TRSTP01

- x 50 D
- x 80 D
- x 80
- x 120
- x 160
- x 200
- x TOUCH 200
- x FLASH 120
- x FLASH 160 HF
- x FLASH 200
- x 300 HP
- x 400 HP
- x SURTRON EVAC
- x SURTRON ABC
- x TOUCH HP 50D
- x TOUCH HP 80D
- + TOUCH HP 80
- + TOUCH HP 120
- + TOUCH HP 160
- + TOUCH HP 200
- + TOUCH HP 300
- + TOUCH HP 400
- + TOUCH HP EVAC



pcs: 1



**Description**  
**Size WxHxD**  
**Weight**  
**Color**  
**Frame Material**

Basket for ST Trolley  
14,5x30x19,3 cm (5,7x11,8x7,6 in)  
2,4 Kg (5,29 lb)  
RAL6027 (Light Green)  
Basket holder applicable to the  
Surtron Touch HP Trolley made with  
steel, covered with a coat of paint.

TRSTCS1

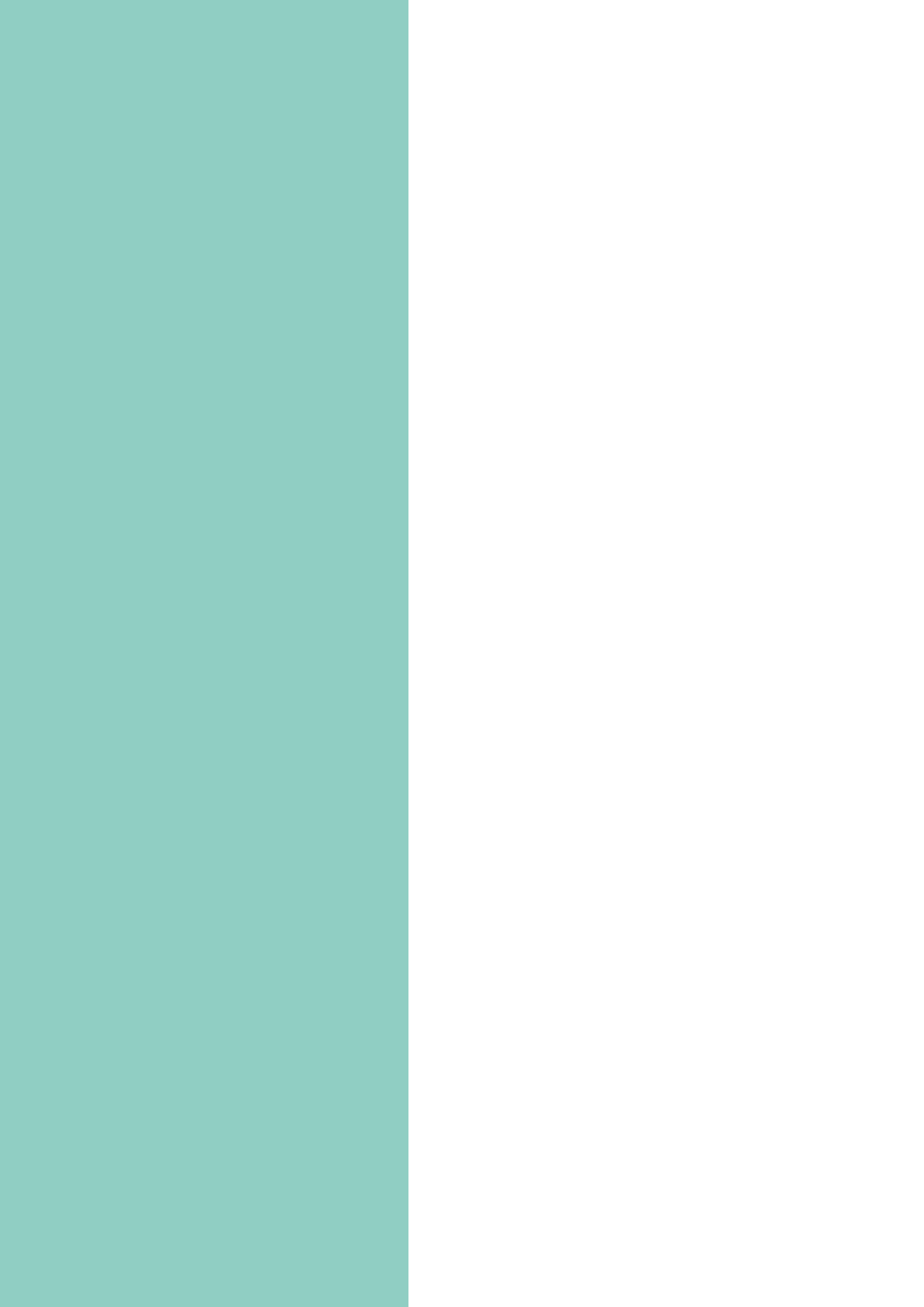
- x 50 D
- x 80 D
- x 80
- x 120
- x 160
- x 200
- x TOUCH 200
- x FLASH 120
- x FLASH 160 HF
- x FLASH 200
- x 300 HP
- x 400 HP
- x SURTRON EVAC
- x SURTRON ABC
- x TOUCH HP 50D
- x TOUCH HP 80D
- x TOUCH HP 80
- x TOUCH HP 120
- x TOUCH HP 160
- x TOUCH HP 200
- + TOUCH HP 300
- + TOUCH HP 400
- x TOUCH HP EVAC



pcs: 1









[www.led.it](http://www.led.it)  
[info@led.it](mailto:info@led.it)



*Headquarter*  
**LED SpA**  
via Selciatella, 40  
04011 Aprilia (LT) Italy

**W** [led.it](http://led.it)  
**M** [info@led.it](mailto:info@led.it)  
**P** +39 06 92870045