



# Filtek™

Universal Restorative

## About the Case

A 50-year-old male patient presented for professional tooth cleaning. He had deep erosive lesions affecting the vestibular aspects of his maxillary central incisors, which he did not consider an issue. Nevertheless, the team informed him about the options to improve the aesthetics and protect the remaining tooth structure. The patient agreed to carry out a home-bleaching treatment followed by a direct restorative treatment with composite.

## Challenge

The biggest challenge was to mask the heavy discolouration while restoring the teeth to a natural shape and shade. 3M™ Filtek™ Universal Restorative was selected to accomplish this task. The Pink Opaquer was applied in a thin layer to cover and optically mask the discolourations.

## Outcome

The patient was happy with the treatment outcome. Three things were achieved with minimal effort. The discolourations were masked, the teeth were restored to their natural shape and the shade blended naturally with the adjacent teeth.



Clinical Case

## Dr Paulo Monteiro

# Solving aesthetic issues in the anterior region with composite

Clinical dentistry and photography by Dr Paulo Monteiro



See a step-by-step Case Overview on back.



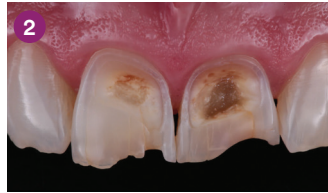
## About Dr Paulo Monteiro

Dr Paulo Monteiro obtained his doctorate of dental medicine at the Instituto Superior de Ciências da Saúde Egas Moniz (ISCSEM) in Caparica, Portugal, where he developed a passion for aesthetic dentistry. He completed the postgraduate program in Aesthetic and Restorative Dentistry at ISCSEM in 2005. Dr Monteiro is coordinator of and professor in the restorative postgraduate program, Aesthetic and Restorative Dentistry, at Instituto Universitário Egas Moniz. He has an exclusive dental practice in Lisbon that focuses on aesthetic and cosmetic dental treatments.

# Case Overview



**1**  
Initial situation: Preoperative frontal view of the patient's teeth, showing severe erosive tooth wear on the vestibular surfaces and incisal edges.



**2**  
Detailed view of the maxillary incisors. The teeth didn't show any highly translucent areas, so the use of a single shade/opacity of 3M™ Filtek™ Universal Restorative was selected.



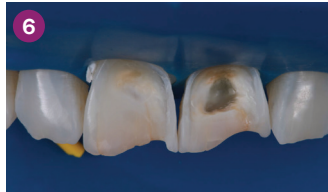
**3**  
Lateral view of the anterior teeth revealed the depth of the lesions on the vestibular surfaces.



**4**  
Tooth shade was determined with the aid of the VITA classical A1-D4® shade guide. The shade A1 matched the sound tooth structure. This corresponded with 3M™ Filtek™ Universal Restorative's A1 shade.



**5**  
The tooth was prepared under rubber dam using 3M™ Sof-Lex™ Extra Thin Finishing and Polishing Disc (coarse). Bevels were created, edges were rounded and the surface was roughened.



**6**  
The preparation procedure resulted in a round form and a micro-retentive surface structure.



**7**  
Lateral view of the prepared teeth.



**8**  
Enamel was etched with 3M™ Scotchbond™ Universal Etchant for 15 seconds. A metal matrix strip was used to protect the adjacent teeth.



**9**  
3M™ Scotchbond™ Universal Adhesive was applied to the rinsed and dried tooth structure. The adhesive was rubbed for 20 seconds, treated with a gentle stream of air for solvent evaporation, and light cured for 10 seconds.



**10**  
Two anterior matrices were placed to help create a natural anterior tooth shape and facilitate restoration of the interproximal and cervical margins.



**11**  
A 1 mm layer of the Pink Opaquer (PO) was placed onto the discoloured sclerotic dentine to mask dark areas and light cured for 20 seconds. The material offered a similar creamy handling as the body shades of 3M™ Filtek™ Universal Restorative.



**12**  
Appearance of the teeth after the first application of 3M™ Filtek™ Universal Restorative A1 shade. No additional body shades were needed (to mask sclerotic dentine) when using the Pink Opaquer.



**13**  
Placement of the second and final layer of 3M™ Filtek™ Universal Restorative A1 shade.



**14**  
Restorations after polishing using the 3M™ Sof-Lex™ Diamond Polishing System.



**15**  
Treatment outcome immediately after rubber dam removal. The discolourations were gone, the restorations and the adjacent teeth had a similar shade, and a natural shape was achieved.

Refer to Instructions for Use (IFU) for complete product information.

To learn more:

[3M.com.au/FiltekUniversal](http://3M.com.au/FiltekUniversal)

[3M.co.nz/FiltekUniversal](http://3M.co.nz/FiltekUniversal)



## 3M Oral Care

3M Australia Pty Limited  
Building A, 1 Rivett Road  
North Ryde, NSW 2113  
1300 363 454  
3M.com.au

3M New Zealand Limited  
94 Apollo Drive  
Rosedale, Auckland 0632  
0800 808 182  
3M.co.nz



Find us on Facebook

3M, Filtek, Scotchbond and Sof-Lex are trademarks of 3M. Please recycle.  
© 3M 2019. All rights reserved.